

**Beekeepers
of
Volusia County
Florida**

**Founded
February 9, 2010**



July 2010

**President's
Corner**

**P
R
O
P
I
L
I
S**

It looks like I am being pulled out of town for the July meeting for a family event. Bill Blue and Ed Williams have volunteered to conduct the meeting in my absence. I will leave preparation of the agenda to Bill and Ed.

During July and August continue to perform your hive inspections at the two to three week intervals. Remember your honey bee biology and focus on a queen right condition. During the summer months the county conducts a number of mosquito spraying days which may affect your hives. It is a good idea to call the county mosquito department and notify them that you have honey bee's and would like to be notified if they are going to be spraying in your area. Take precautions as necessary.

The months of July and August produce a moderate to low nectar flow. Various palms are the major nectar plants which bloom in July and August so honey stores may grow at a low rate. Add honey supers as needed. Remember the general rule is to add a new super once 8 of 10 frames has been filled. Do not add too many supers as this give the hive beetles more undefended areas to hide from the bees.

Remember, don't be too concerned about a blanket of bees on your hives at night during the summer months; they are just trying to keep cool.

Looks like we have our first Tropical Storm (Bonnie?), not a problem for us but still a wakeup call as mentioned in my last letter for us to be ready in case we need to tie down our hives.

In August, Kevin Jester has offered to host a day in his Bee Yard in Edgewater, we are thinking about the Saturday, August 21st, Nuc's will also be available for sale, if you are interested in purchasing a Nuc please give Kevin Jester or me a call so that Kevin can be prepared.

Bee Friendly,

Tom Bartlett

**President, Beekeepers of Volusia County, Florida
University of Florida Master Beekeepers Program
Certified University of Florida Welsh Honey Judge**

**The information
that glues us
together**

Ka-Bloom?

No, but here is what is, or will be, blooming soon.

July and August

Spanish needle
Palmetto
Mexican clover
Buttermint
Palm
Gopher Apple
Join Weed
Redbay
Sandhill prairie clover
Partridge Pea
Mangrove
Primrose willow
Spiderewort/Dayflower
Spotted mint
Goldenrod
Vine aster
Sumac
Crepe myrtle

The crepe myrtles in my yard are in full bloom right now. When walking in my driveway the sound is like being next to a hive when it is disturbed... VERY LOUD BUZZING. My honey bees and what seems like every carpenter bee in Volusia County are having a party. Very enjoyable indeed!

Uncle Ed's Points to Ponder!

- If you choke a Smurf, what color does it become?
- Why can you be IN a movie but ON TV?
- If electricity comes from electrons does morality come from morons?
- Why do 'fat chance' and 'slim chance' mean the same thing.



**B
E
E
T
H
A
N
K
F
U
L
!**

Read Of The Month

No book review this month. How about information about where to get books and DVDs at the best prices so you can enjoy and review them yourself? One thing I have learned is to NOT purchase them from beekeeping equipment suppliers. I just bought the NOVA DVD about bees (BEES—Tales from the Hive). One beekeeping equipment supplier wanted \$30 and another wanted \$35. Got it from Amazon.com for \$22 including shipping. Beekeeping suppliers charge plenty for their shipping.

Good places to start looking for quality reading materials and DVDs are Amazon.com, Overstock.com and Booksamillion.com. Compare prices at these sites because there can be significant differences. Shipping from these three companies is low and many times free with reasonably low value purchases.

By the way, try the DVD mentioned above. It has some great close up video of bees in the hive. So, you got a review anyway.

Hive Management Tasks

July

- Remove and process honey... main flow stops
- Varroa populations begin to grow—monitor colonies closely. The economic threshold is 60+ mites/day on sticky screen or 17+ mites in an ether roll for colony of average strength. Treat if you exceed these numbers.

August

- Monitor for Varroa mites as in July
- Treat with Terramycin dust for AFB/EFB
- Feed colonies if light
- Monitor and control SHB
- It's August in Florida... make sure hives are adequately ventilated.

Thanks to Dr. Jamie Ellis of the UF HBREL for this information.

"Forget injuries, never forget kindnesses."

- Confucius

Nosema

Nosema apis and Nosema cerana... micro-sporidian (fungus)... bee dysentery. Nosema apis has been in the U.S. for years while Nosema cerana is relatively new.

Nosema is a disease of the gut and is most prevalent when a large amount of bees are kept confined. This is likely to happen in late winter when the bees are unable to get out of the hive and defecate. This makes Nosema more of a problem in the north than here in Florida.

What are symptoms of Nosema? Bees walking on the ground around the hive (not only a symptom of Nosema)... K-wing, the forewing and hind wing of the bees become detached (not just a symptom of Nosema)... fecal staining on the outside of hive bodies... slow spring build up. Unfortunately, these are not foolproof indicators. The only true indicator is to have a lab dissect some bees.

What to do for Nosema? Fumagilin B is the only treatment currently available. There are no effective IPM techniques. It is not clear if Nosema apis and Nosema cerana react the same way to Fumagilin so research continues. There is no way, other than microscopic analysis, to tell the difference between the two pests.

For more information check out this video... <http://entnemdept.ufl.edu/honeybee/extension/Nosema.shtml>

Next Meeting

Wednesday
July 28, 2010
6:30 PM

Volusia County Agricultural Center
Auditorium, 3100 E. New York Ave., Deland



B
E
E
S

A
R
E

U
S
!



Yummy Tummy Honey

Glazed Rice-Stuffed Squash
From Chris Wilson

2 cups of cooked rice (any type)
2 large butternut squash
4 TB butter
1/4 cup honey
2 TB orange juice concentrate
1/2 cup sliced green onions
3/4 cup dried cranberries
1/2 cup chopped pecans
2 TB honey

While rice is cooking pre-heat oven to 375 degrees. Spray baking pan with cooking spray. Cut squash in half lengthwise and remove seeds. Place squash cut side down in sprayed pan and bake at 375 for 30 minutes.

Meanwhile, in small saucepan, melt 2 TB of butter. Stir in 1/4 cup honey and orange juice. Set glaze aside.

In medium sauce pan, melt remaining 2 TB of butter. Add onions, cook and stir 1 to 2 minutes or until crisp-tender. Add cranberries, pecans and 2 TB honey. Cook and stir until berries and nuts are coated. Stir in rice.

Remove squash from oven. Turn squash over, brush with glaze. Mound rice mixture into and on top of squash halves. Drizzle with remaining glaze. Return to oven. Bake an additional 30 minutes or until squash is tender and filling is thoroughly heated.

The only stable state is the one in which all men are equal before the law.

Aristotle



Bee of the Month

Apis mellifera scuttellata

This is the bad bug. The African bee that has spawned the Africanized bee. Wait... not a bad bug just one that defends its home, brood and food stores aggressively.

A.m. scuttellata was brought to Brazil in the early 50's to help develop a strain of honey bees that would do well in the tropical climate. Unfortunately, some queens escaped and the migration of the Africanized bees from South America to North America began.

Even though they are very aggressive, beekeepers and South America and Africa do keep them and raise honey. The major issue is with Africanized bees is people who inadvertently disturb a hive. While the venom of these bees is no stronger than that of other *Apis mellifera* sub-species, it is the number of stings that makes scuttellata so dangerous. Check out this link for detailed information to keep you and others safe.... <http://entnemdept.ufl.edu/afbee/resources/homeowners.shtml>

Next month... *Apis mellifera carnica*

by Volecia Plafcan

As I walk in the woods
I know you're nearby
'cause the sound of your buzzing
makes me want to fly
out of the woods
there's a hive in a tree
and I know you're all working
to make that sweet honey
my dad will be taking
for all of us for a
delicious delight
when my mom makes
those good biscuits tonight..

Poll Number 2 Results

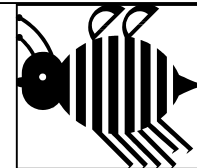
First question was about smoker fuel. The overwhelming winner was pine straw with some users adding Spanish Moss and pine chips. One member uses red cedar chips which are available in pet stores.

Hive body sizes was the next questions. All but one respondent use 10 frame bodies. One member uses 8 frame for the lower weight. Some 10 frame advocates use 10 frames in brood boxes but 9 frames in supers for more honey. Two members use 9 frames in all hive bodies.

What tools do you use rounded out this poll. Not a lot of big surprises here.

- Smoker... everyone uses
- Hive tool... everyone uses
- Only 3 said they use a veil but I suspect most do but did not consider it a tool
- One member uses a j-hook frame lifter in addition to the hive tool
- Most of us use a bee brush
- Only two mentioned a frame perch
- 3 mentioned a frame grabber
- 2 use a table
- One member uses an extra super and a sheet

One thing is certain about beekeepers... if 10 beekeepers are asked a question there will be at least 12 different answers. One of the things that makes beekeeping interesting... there is more than one way that works.



What Do You Would You Like?

The Beekeepers of Volusia County is your club. What would you like to see in the newsletter? Are there any training activities you would like to have take place? What topics would you like discussed at meetings? Share your thoughts at the club meetings and help make the club the best it can be.

Events of Interest to Beekeepers

July 28, 2010... Beekeepers of Volusia County meeting

August 25, 2010... Beekeepers of Volusia County meeting

September 22, 2010... Beekeepers of Volusia County meeting

October 2010... Master Bee Program in Ft. Myers

October 27, 2010... Beekeepers of Volusia County meeting

October 28-30, 2010... Florida State Beekeepers Association 90th Convention, Ft. Myers

November Club Meeting... TBD

December 22, 2010... Beekeepers of Volusia County meeting

March 11 & 12, 2011... Bee College

Need Help? Call A Mentor!

Tom Bartlett: bartteb@aol.com—
386-756-2571

Marlin Athern : 386-428-0838
mjathear@volusia.k12.fl.us

If you are an experienced beekeeper please volunteer to help your club mates.



Points to Ponder for July Meeting

What would you like the club to do? Let your interests, needs and desires be known at the meeting.

- Projects the club can do to mentor young beekeepers?
- Projects the club can do to make the community bee knowledgeable and bee friendly?
- Hands on training sessions? Equipment assembly? Hive inspections?
- Club maintained hives?
- Social events?
- Loaner equipment?
- Bulk purchasing?
- Beekeeping crafts? Wax crafts? Mead making? Mead drinking?
- Queen rearing?



Don't Stop Here!

The technical and instructional information in this newsletter is introductory in nature. To become fully knowledgeable on a subject it is necessary that further study be undertaken. Knowledge is power!

"Little by little, one travels far." ... J.R.R. Tolkien

BEEKEEPERS OF VOLUSIA COUNTY, FLORIDA

Minutes (not yet accepted)

June 23,2010

6:30 p.m.

Meeting called to order by Vice President, Bill Blue.

Ed Luttmann first showed the club the usefulness of cake sheet pans in the apiary. He took orders from members who wanted to purchase them and will deliver them at the July meeting.

Vice President Bill Blue brought us up to date on the 4-H group, Bee Attitudes. Pioneer Village will be having a Fall Jamboree the first weekend in November and it was suggested that the Club staff a booth at the Jamboree. Bill Blue will chair this event.

All members then got up to introduce themselves and to tell the club stories of their experiences in beekeeping. Some great stories were told and a lot was learned by this sharing time.

Jim McEwen, President of the Lyonia Chapter of Florida Native Plant Society was a visitor to this meeting. He extended an invitation to members to come and join them at their club.

Mike Hayes then discussed the Epi Pen certification class to be held this fall in Flagler County. Exact time and location will be announced later.

8:15 p.m meeting was adjourned.

Next meeting will be July 28,2010 at 6:30p.m.

Club Officers

President—Tom Bartlett—bartteb@aol.com—386-756-2571

Vice President—Bill Blue—billblue0072003@yahoo.com—386-490-5966

Treasurer—Ron Kull—kullrp@yahoo.com—386-451-2978

Secretary—Rose Williams - rmbwill@hotmail.com - 407-323-3056


Businesses of Members

Full Moon Natives

Specializing in
Native & Waterwise Plants
Eco Landscape Designs
Butterfly Gardens
Kevin & Marvette Bagwell
386.212.9923
www.FullMoonNatives.com
1737 Fern Park Drive
Port Orange, FL 32128
kevinb@FullMoonNatives.com
Mon-Wed by appointment
Thur-Fri 10:00-5:00
Saturday 8:00-4:00

1 mile west of
I-95/Dunlawton
Look for the Sun Totem

TERRY L. ELLIS, President
TLE CONSTRUCTION ENTERPRISES, INC.
GENERAL & ROOFING CONTRACTOR
COMMERCIAL RESIDENTIAL
LICENSED, INSURED & STATE CERTIFIED
Ormond Beach, Florida
Phone: 386 615 6575
Fax: 386 615 6501
Email: tleenterprises@cfl.rr.com
Website: www.TLEconstruction.com


VOLUSIA BUILDING INDUSTRY ASSOCIATION
Builder Member

Clifton Farms, Inc.
Growers of Southern Peas & Green Peanuts
Jody & Carmen Clifton
Owners/Operators
6575 State Road #11
DeLeon Springs, Florida
32130
386 985-5142
386 717-0521 (C)
CAClifton2@aol.com

Deb's Bee Supply

**Hive Bodies, Supers,
Frames, Foundation,
Smokers, Hive Tools and More!**
(904) 886-9389


**OLD SAWMILL
ELECTRIC, INC.**
Donald Walker
Over 23 Years Experience
Industrial, Commercial & Residential
Service & Repairs
Licensed & Insured Cell: 386-566-6126
ER13014236 Home: 386-738-8690

S&S Apiaries **BEE
REMOVAL**
Single Story Hives & 5 Frame Nucs
Pure Honey & More
FOR SALE
Jesse Azam
(386) 478-9722 Cell • (386) 427-6543 Fax
116 Riverside Terrace • Edgewater, FL 32141



Members who wish to advertise their business in the club newsletter please provide a business card to Ed Williams.

"I used to believe in forever, but forever is too good to be true"... Winnie the Pooh

For Sale—Wanted

**Members want to buy or sell something?
Email Ed Williams your ad at
astrocyclor@att.net.**

Beekeepers of Volusia County, Florida

Membership Registration Form

Name _____

Address _____

City _____ State ____ Zip Code _____

Telephone Number _____

E-mail address: Important - Much business is done by electronic mail

1. Regular Membership (includes family members) \$15.00 []
2. Lifetime Membership donation of one hive with 10 frames and bees or \$250 { }

Please make checks payable to Beekeepers of Volusia County, Florida

Bring to meeting or mail to:

Ron Kull, Treasurer, 2525 Palm Dr.
Port Orange, FL 32128,
Phone: 1-386-451-2978
E-mail: Kullrp@yahoo.com

Meeting Information... 4th Wednesday of each month... 6:30 PM...
Volusia County Agricultural Center Auditorium,
3100 E. New York Ave., Deland