

**Beekeepers  
of  
Volusia County  
Florida**

**Founded  
February 9, 2010**



**January 2012**

**President's  
Corner**

**P  
R  
O  
P  
I  
L  
I  
S**

**Hello Folks;**

**Spring is just around the corner. So far we have had a mild winter. A few more cold nights are still possible through the month of March. However, with these warm days it looks like the plants think that it is spring. My friends who have citrus trees tell me that their trees are ready to blooms.**

**I have been seeing the bees bringing in a lot of pollen into the hives during the past few days. This tells me that perhaps they are building their bee bread stores for a new batch of brood for the up coming spring season.**

**We may also need to prepare for early swarming this year. The cone style swarm traps really worked good for me last year. I will be putting them out early this year. I also will have my 5 gallon bucket on a long pole ready to go for those swarms which happen to land on a tree branch.**

**By now you should have your queen excluders cleaned and ready to go and all your equipment in tip top shape, especially your honey supers. It may be a good idea to put a honey super on now to give your hives plenty of room for an early bloom and to discourage swarming. Remember the bees will not wait for you to get ready.**

**Do you have all your spring queen and nucs orders in ? Don't forget to support our local bee equipment suppliers.**

**Bee Friendly,**

**Tom Bartlett  
President, Beekeepers of Volusia Country, Florida  
University of Florida Master Beekeepers Program - Master Beekeeper**

# Events of Interest to Beekeepers

**January 25, 2012 ... Beekeepers of Volusia  
County Meeting**

**February 22, 2012 ... Beekeepers of Volusia  
Country Meeting**

**University of Florida - Bee College - March 9th  
and 10th, 2012**

**University of Florida Master Beekeeping  
Exams Thursday, March 09, 2012**

**Check out the Full Moon Natives Web site for  
great weekend seminars on a host of "Go  
Green" topics. (Fullmoonnatives.com)**

**Annual Tupelo Honey Festival in  
Wewahitchka, Florida, May 19, 2012**



## **Cottage Food Legislation Signed into Law**

In case you missed our e-mail, During the 2011 Legislative Session, the Florida Legislature enacted the House Bill 7209 allowing individuals to manufacture, sell and store certain types of "Cottage Food" products in an unlicensed home kitchen. This Bill includes Honey as a cottage food. Some details include:

Gross sales for a cottage food operation must not exceed \$15,000 annually.

Products must be sold directly by the cottage food operator to the consumer.

Sales by internet, mail order, consignment or at wholesale are prohibited

All Cottage food products must include the Name and Address of the food operator.

Must also be labeled in at least 10pt type in a color that provides a clear contrast to the background label: "Made in a cottage food operation that is not subject to Florida's food safety regulations.

For more details, check the Florida Department of Agriculture and Consumer Services Web Site.

## **Need Help? Call A Mentor!**

**Tom Bartlett:** bartteb@aol.com—386-756-2571

**Marlin Athern :** 386-428-0838  
mjathear@volusia.k12.fl.us

**If you are an experienced beekeeper  
please volunteer to help your club  
mates.**

"Before beginning a Hunt, it is wise to ask someone what you are looking for before you begin looking for it."... Winnie The Pooh

# Florida Management Beekeeper Calendar – Central Florida

Used with permission of University of Florida Honey Bee Research and Extension Laboratory

Month	Management Calendar	Blooming Plants
January	1- Feed colonies if light (colonies can starve!) 2- Nosema can be a significant colony problem this time of year. You can treat colonies for Nosema disease using Fumigillin. Colonies may need as much as 4 gallons of medicated syrup to control <i>Nosema ceranae</i> . 3- Repair/paint old equipment	Sand Pine <sup>F</sup> , Maple <sup>F</sup> , Willow <sup>FM</sup>  F <sup>F</sup> continues to bloom in February FM <sup>FM</sup> continues to bloom in February and March
February	1- Feed colonies if light (colonies can starve!) 2- Can treat colonies for Nosema disease using Fumigillin. 3- Can treat with Terramycin or Tylan for AFB.	Plum <sup>M</sup> , Cherry <sup>M</sup> , Oak <sup>M</sup> , Walther Viburnum <sup>M</sup> , Sweet Clover <sup>M</sup> , Blueberry <sup>M</sup> , Haw <sup>M</sup> , Fetterbush <sup>M</sup>  M <sup>M</sup> continues to bloom in March
March	1- Attend UF Bee College in Marineland!!! 2- Colony Populations begin to grow! Add supers and/or control swarming as necessary. 3- Can treat with Terramycin or Tylan <i>dust</i> for AFB/EFB. 4- Make nucs/splits.	Orange, Spanish Needle
April	1- Disease and queen problems should be remedied. 2- Make splits/nucs – new queens available 3- Control swarming 4- Add supers, the nectar flow began in late March	Orange, Sweet clover, Wild Blueberry, Haw, Fetterbush <sup>M</sup> , Spanish Needle <sup>MJ</sup> , Galberry <sup>M</sup> , Dog Hobble <sup>MJ</sup> , Palmetto <sup>MJ</sup> , Mexican Clover <sup>MJ</sup> , Butter Mint <sup>MJ</sup>  M <sup>M</sup> continues to bloom in May J <sup>J</sup> continues to bloom in June MJ <sup>MJ</sup> continues to bloom in May and June
May	1- Continue to inspect for colony maladies but don't treat for diseases while producing honey 2- Continue swarm control 3- Super as necessary	Palm <sup>J</sup> , Gopher Apple <sup>J</sup> , Joint Weed <sup>J</sup> , Sandhill Prairie Clover <sup>J</sup> , Spiderwort/Dayflower <sup>J</sup>  J <sup>J</sup> continues to bloom in June

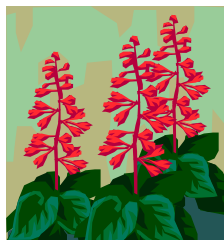
Note: Citrus blooms in March. Make sure your colonies are ready. Talk with your growers about their pesticide habits.



# Florida Management Beekeeper Calendar – Central Florida

Used with permission of University of Florida Honey Bee Research and Extension Laboratory

Month	Management Calendar	Blooming Plants
June	<p>1- Super as necessary for late flowers</p> <p>2- Varroa populations begin to grow – monitor colonies closely. The economic threshold is 60+ mites/day on a sticky screen or 17+ mites in an ether roll. Treat if you exceed these numbers.</p>	Mangrove, Red Bay, Cabbage Palm
July	<p>1- Remove and process honey – main flow stops</p> <p>2- Varroa populations begin to grow – monitor colonies closely. The economic threshold is 60+ mite/day on a sticky screen or 17+ mites in an ether roll for a colony of average strength. Treat if you exceed these numbers. Option include: Apigard, ApilifeVAR, Mite Away II.</p>	<p>Spanish Needle<sup>AS</sup>, Palmetto, Mexican Clover<sup>AS</sup>, Buttermint, Palm, Gopher Apple, Joint Weed<sup>A</sup>, Redbay<sup>AS</sup>, Sandhill Prairie Clover<sup>A</sup>, Partridge Pea<sup>A</sup>, Mangrove<sup>A</sup>, Primrose Willow<sup>AS</sup>, Spiderwort/Dayflower<sup>AS</sup></p> <p><sup>A</sup>continues to bloom in August <sup>AS</sup>continues to bloom in September</p>
August	<p>1- Monitor colonies for varroa (see July)!</p> <p>2- Treat with Terramycin <i>dust</i> for AFB/EFB</p> <p>3- Feed colonies if light</p> <p>4-Monitor for and control small hive beetles</p> <p>5- It's hot! Ensure adequate colony ventilation</p>	<p>Spotted Mint<sup>S</sup>, Goldenrod<sup>S</sup>, Vine Aster<sup>S</sup>, Sumac<sup>S</sup></p> <p><sup>S</sup>continues to bloom in September</p>
September	<p>1- Monitor colonies for varroa (see July)!</p> <p>2- Super colonies if strong B. Pepper flow</p> <p>3- Consider treating colonies for Nosema disease using Fumidil-B. Colonies may need as much as 4 gallons of medicated syrup to control <i>Nosema cerana</i>.</p> <p>5- If no nectar flow, feed colonies if light</p>	<p>Smart Weed, Brazilian Pepper, Bush Aster</p> <p>Note: Brazilian Pepper blooms from September through October and is a significant fall source of nectar for bees.</p>
October – December	<p>1- Varroa populations peaked in Aug/Sept. The economic threshold is 60+ mites/day on a sticky board or 17+ mites in an ether roll for a <b>colony of average strength</b>. Treat if you exceed these numbers. Options include: Apiguard, ApilifeVAR, Mite Away II</p> <p>2- Can treat colonies for Nosema disease using Fumigillin. Colonies may need as much as 4 gallons of medicated syrup to control <i>Nosema cerana</i>.</p> <p>3-Monitor for and control small hive beetles (options include Checkmite+, GuardStar, Hood traps and West Beetle traps)</p> <p>4- Feed colonies if light (colonies can starve!)</p> <p>5-Can treat for tracheal mites (mix vegetable oil and powdered sugar until doughy (not sticky to touch): place a pancake-sized patty on top bars of brood chamber.</p>	<p><b>Oct:</b> Spanish Needle, Mexican Clover<sup>N</sup>, Primrose Willow<sup>N</sup>, Spotted Mint<sup>N</sup>, Goldenrod<sup>M</sup>, Vine Aster<sup>N</sup>, Smart Weed<sup>N</sup>, Bush Aster<sup>ND</sup></p> <p><sup>N</sup>continues to bloom in November</p> <p><sup>D</sup>continues to bloom in December</p> <p><b>Nov:</b> Nothing new blooms</p> <p><b>Dec:</b> Nothing new blooms</p>



# Beekeepers of Volusia County, Florida

## Meeting Agenda

January 25, 2012

Call to order and welcome:

Business:

- 2012 Membership Drive / Registrations / \$15.00 Renewals
- Treasurer's Report
- Review and Acceptance of November Minutes (No. December 2011 Meeting)

Presentations Discussions:

- Video—Tales from the Hive - an amazing up close footage filmed with specially developed macro lenses bring you the most intimate and most spectacular portrayed of a working bee colony ever filmed.
- Nominations for club officers to be elected during the February meeting
- Questions and open discussion

Adjournment

# **Beekeepers of Volusia County**

## **Next Meeting**

**Wednesday  
January 25, 2012  
6:30 PM**

**Volusia County Agricultural  
Center Auditorium,  
3100 E. New York Ave., Deland**

**Check Out Our Website**

**[www.beekeepersofvolusiacountyfl.com](http://www.beekeepersofvolusiacountyfl.com)**

## **Club Officers**

**President**—Tom Bartlett—bartteb@aol.com—386-756-2571

**Vice President**—Marlin Athearn—mjathearn@Volusia.k.12.fl.us

**Treasurer**—Ron Kull—kullrp@yahoo.com—386-451-2978

**Secretary**—Donna Balo

## Local Beekeeping Suppliers who are members of the Club

1. **Debs Beekeeping Supplies** – Hastings Fl. & Jacksonville Fl.  
1-904-886-9389 & 1-877-703-DEBS
2. **North American Bee Hive Co.** - Jacksonville, Fl.—1-904-378-5006



**“When someone shares something of value with you and you benefit from it, you have a moral obligation to share it with others.” ...**

Chinese Proverb

**BEEKEEPERS OF VOLUSIA COUNTY, FLORIDA**  
**Minutes (not yet accepted)**

Beekeepers of Volusia County, Florida  
11/23/11 Minutes

Bee Meeting 11/23/11

called to order by Mike Hays @ 6:35pm  
25 in attendance

Treasurers Report: not given

Bee inspector duty is to look for American Foulbrood & to ensure beehives comply with state statutes .  
Beehive owners can request inspections.  
David Westerbeit 352-372-3505 x 421  
Alesa Raines

Close down entrance to hives now & add a mouse guard

Tampa Bay Beekeepers Association is a good website

Discussed local ordinance differences & the need for beekeepers to become involved in the ordinances.

Marlin discussed the importance of constant mite & hive beetle inspection

Order supplies now for spring

Do not go into the hive if the temperature is in the 40s & 50s . The bees will keep each other warm, do not enter. Keep screen bottom on. Hives should weigh 30-40#s

During the months of December & January be on the lookout for nosema

Begin pollen substitutes now. Start with 1/2 a patty & recheck & refeed about every 10days

Submitted by Donna Balo, Secretary

**I am not bound to win, but I am bound to be true. I am not bound to succeed, but I am bound to live by the light that I have. I must stand with anybody that stands right, and stand with him while he is right, and part with him when he goes wrong.**

**Abraham Lincoln**



# Businesses of Members

**Full Moon Natives**



Specializing in  
Native & Waterwise Plants  
Eco Landscape Designs  
Butterfly Gardens

**Kevin & Marvette Bagwell**  
**386.212.9923**  
[www.FullMoonNatives.com](http://www.FullMoonNatives.com)  
1737 Fern Park Drive  
Port Orange, FL 32128  
kevinb@FullMoonNatives.com

1 mile west of  
I-95/Dunlawton  
**Look for the Sun Totem**

Mon-Wed by appointment  
Thur-Fri 10:00-5:00  
Saturday 8:00-4:00

TERRY L. ELLIS, President

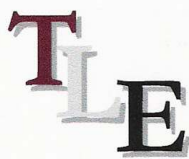
**TLE CONSTRUCTION ENTERPRISES, INC.**

**GENERAL & ROOFING CONTRACTOR**

COMMERCIAL RESIDENTIAL  
LICENSED, INSURED & STATE CERTIFIED

Ormond Beach, Florida

Phone: 386 615 6575  
Fax: 386 615 6501  
Email: [tleenterprises@cfl.rr.com](mailto:tleenterprises@cfl.rr.com)  
Website: [www.TLEconstruction.com](http://www.TLEconstruction.com)



VOLUSIA BUILDING INDUSTRY ASSOCIATION  
Builder Member

*Clifton Farms, Inc.*  
Growers of Southern Peas & Green Peanuts

*Jody & Carmen Clifton*  
Owners/Operators

6575 State Road #11  
DeLeon Springs, Florida  
32130

386 985-5142  
386 717-0521 (C)  
[CAClifton2@aol.com](mailto:CAClifton2@aol.com)



**Deb's Bee Supply**



**Hive Bodies, Supers,  
Frames, Foundation,  
Smokers, Hive Tools and More!**

**(904) 886-9389**



**OLD SAWMILL  
ELECTRIC, INC.**

Donald Walker

Over 23 Years Experience  
Industrial, Commercial & Residential  
Service & Repairs

Licensed & Insured Cell: 386-566-6126  
ER13014236 Home: 386-738-8690

**S&S** Apiaries **BEE REMOVAL**

Single Story Hives & 5 Frame Nucs  
Pure Honey & More  
FOR SALE



Jesse Azam  
(386) 478-9722 Cell • (386) 427-6543 Fax  
116 Riverside Terrace • Edgewater, FL 32141

*Alysian Apiaries*  
Helping the environment one bee at a  
time!

Honey bee removal  
Bee sales  
Honey  
Hive products

407/ 417-1896

Scott MacMahon  
Peggy MacMahon  
Ian MacMahon

[scottmacmahon@yahoo.com](mailto:scottmacmahon@yahoo.com)



**“Do not dwell in the past, do not dream of the future, concentrate the mind on the present moment.” ... Buddha**

# Beekeepers of Volusia County, Florida

## Membership Registration Form

---

Name \_\_\_\_\_

---

Address \_\_\_\_\_

City \_\_\_\_\_ State \_\_\_\_\_ Zip Code \_\_\_\_\_

---

Telephone Number \_\_\_\_\_

---

**E-mail address: Important - Much business is done by electronic mail**

1. Regular Membership (includes family members) \$15.00 [ ]
2. Lifetime Membership donation of one hive with 10 frames and bees or \$250 { }

**Please make checks payable to Beekeepers of Volusia County, Florida**

**Bring to meeting or mail to:**

**Ron Kull, Treasurer, 2525 Palm Dr.  
Port Orange, FL 32128,  
Phone: 1-386-451-2978  
E-mail: Kullrp@yahoo.com**

**Meeting Information...**