

**Beekeepers
of
Volusia County
Florida**

**Founded
February 9, 2010**



February 2012

**President's
Corner**

**P
R
O
P
I
L
I
S**

_Hello Bee Keepers of Volusia Co.

I'm sitting here at the Southern District Physical Education convention in Orlando, wondering why I'm not working on my hardware and visiting my girls. That's right I'm here and would rather bee with my bees. The list of things I should be doing is long and daunting. My girls have already suffered from my busy schedule and lack of attention, I have lost 7 full hives this winter. The most probable culprit is varoa mites or the viruses they carry. The chores I should have already completed are repairing/ painting old hardware, building new hardware and frames, put out swarm traps and check for early spring build up to head off the early swarming. It may be time to add space or supers and the list goes on.

As I look forward to the meeting on Feb. 22, I would like to take this opportunity to thank Tom and Rita Bartlett for stepping up and organizing this club and taking such a big leadership role in it. I only hope Mike and I can do the job justice. Lastly if you can join us at the UF Bee College on March 9&10 at the old Marine Land Park, I'll be volunteering because I'm not testing this year, Tom is presenting and several others including Mike Hayes are testing on the 8th of March.

See you in the Bee yard

Marlin Athearn—President Beekeepers of Volusia County

UF Master Beekeeper Program

Events of Interest to Beekeepers

**February 22, 2012 ... Beekeepers of Volusia
County Meeting**

**University of Florida - Bee College - March 9th
and 10th, 2012**

**University of Florida Master Beekeeping
Exams Thursday, March 09, 2012**

**March 28, 2012 --- Beekeepers of Volusia
County Meeting**

**Check out the Full Moon Natives Web site for
great weekend seminars on a host of "Go
Green" topics. (Fullmoonnatives.com)**

**Annual Tupelo Honey Festival in
Wewahitchka, Florida, May 19, 2012**



Honey Bee Facts & Trivia

How fast can a bee fly?

Answer — 15 miles per hour

How long does a honey bee live?

Answer—4 weeks

How far does a bee fly to make 1 lb of honey?

Answer— 55,000 miles

How fast does a honey bees wings go?

Answer—200 times per second

How much honey does a bee make in a life-
time? Answer—1/10th of a teaspoon

How many worker bees does it take to make a
pound of honey? Answer—10,000 and it takes
25,000 trips to flowers to collect pollen &
nectar

A pound of honey is the essence of how many
flowers? Answer— 2 million

Honey bees can see all human colors and ultra
violet except for what color—Answer—Red

How much honey does a bee eat to make one
pound of wax ? - Answer—6 to 8 pounds

Need Help? Call A Mentor!

Tom Bartlett: bartteb@aol.com—386-756-
2571

Marlin Athern : 386-428-0838
mjathear@volusia.k12.fl.us

**If you are an experienced beekeeper
please volunteer to help your club
mates.**

“The happiness of the bee and the dolphin is to exist For man it
is to know that and to wonder at it. Jacques Yves Cousteau

Florida Management Beekeeper Calendar – Central Florida

Used with permission of University of Florida Honey Bee Research and Extension Laboratory

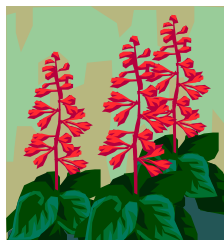
Month	Management Calendar	Blooming Plants
January	1- Feed colonies if light (colonies can starve!) 2- Nosema can be a significant colony problem this time of year. You can treat colonies for Nosema disease using Fumigillin. Colonies may need as much as 4 gallons of medicated syrup to control <i>Nosema ceranae</i> . 3- Repair/paint old equipment	Sand Pine ^F , Maple ^F , Willow ^{FM} F ^F continues to bloom in February FM ^{FM} continues to bloom in February and March
February	1- Feed colonies if light (colonies can starve!) 2- Can treat colonies for Nosema disease using Fumigillin. 3- Can treat with Terramycin or Tylan for AFB.	Plum ^M , Cherry ^M , Oak ^M , Walther Viburnum ^M , Sweet Clover ^M , Blueberry ^M , Haw ^M , Fetterbush ^M M ^M continues to bloom in March
March Note: Citrus blooms in March. Make sure your colonies are ready. Talk with your growers about their pesticide habits.	1- Attend UF Bee College in Marineland!!! 2- Colony Populations begin to grow! Add supers and/or control swarming as necessary. 3- Can treat with Terramycin or Tylan <i>dust</i> for AFB/EFB. 4- Make nucs/splits.	Orange, Spanish Needle
April	1- Disease and queen problems should be remedied. 2- Make splits/nucs – new queens available 3- Control swarming 4- Add supers, the nectar flow began in late March	Orange, Sweet clover, Wild Blueberry, Haw, Fetterbush ^M , Spanish Needle ^{MJ} , Galberry ^M , Dog Hobble ^{MJ} , Palmetto ^{MJ} , Mexican Clover ^{MJ} , Butter Mint ^{MJ} M ^M continues to bloom in May J ^J continues to bloom in June MJ ^{MJ} continues to bloom in May and June
May	1- Continue to inspect for colony maladies but don't treat for diseases while producing honey 2- Continue swarm control 3- Super as necessary	Palm ^J , Gopher Apple ^J , Joint Weed ^J , Sandhill Prairie Clover ^J , Spiderwort/Dayflower ^J J ^J continues to bloom in June



Florida Management Beekeeper Calendar – Central Florida

Used with permission of University of Florida Honey Bee Research and Extension Laboratory

Month	Management Calendar	Blooming Plants
June	<p>1- Super as necessary for late flowers</p> <p>2- Varroa populations begin to grow – monitor colonies closely. The economic threshold is 60+ mites/day on a sticky screen or 17+ mites in an ether roll. Treat if you exceed these numbers.</p>	Mangrove, Red Bay, Cabbage Palm
July	<p>1- Remove and process honey – main flow stops</p> <p>2- Varroa populations begin to grow – monitor colonies closely. The economic threshold is 60+ mite/day on a sticky screen or 17+ mites in an ether roll for a colony of average strength. Treat if you exceed these numbers. Option include: Apigard, ApilifeVAR, Mite Away II.</p>	<p>Spanish Needle^{AS}, Palmetto, Mexican Clover^{AS}, Buttermint, Palm, Gopher Apple, Joint Weed^A, Redbay^{AS}, Sandhill Prairie Clover^A, Partridge Pea^A, Mangrove^A, Primrose Willow^{AS}, Spiderwort/Dayflower^{AS}</p> <p>^Acontinues to bloom in August ^{AS}continues to bloom in September</p>
August	<p>1- Monitor colonies for varroa (see July)!</p> <p>2- Treat with Terramycin <i>dust</i> for AFB/EFB</p> <p>3- Feed colonies if light</p> <p>4-Monitor for and control small hive beetles</p> <p>5- It's hot! Ensure adequate colony ventilation</p>	<p>Spotted Mint^S, Goldenrod^S, Vine Aster^S, Sumac^S</p> <p>^Scontinues to bloom in September</p>
September	<p>1- Monitor colonies for varroa (see July)!</p> <p>2- Super colonies if strong B. Pepper flow</p> <p>3- Consider treating colonies for Nosema disease using Fumidil-B. Colonies may need as much as 4 gallons of medicated syrup to control <i>Nosema cerana</i>.</p> <p>5- If no nectar flow, feed colonies if light</p>	<p>Smart Weed, Brazilian Pepper, Bush Aster</p> <p>Note: Brazilian Pepper blooms from September through October and is a significant fall source of nectar for bees.</p>
October – December	<p>1- Varroa populations peaked in Aug/Sept. The economic threshold is 60+ mites/day on a sticky board or 17+ mites in an ether roll for a colony of average strength. Treat if you exceed these numbers. Options include: Apiguard, ApilifeVAR, Mite Away II</p> <p>2- Can treat colonies for Nosema disease using Fumigillin. Colonies may need as much as 4 gallons of medicated syrup to control <i>Nosema cerana</i>.</p> <p>3-Monitor for and control small hive beetles (options include Checkmite+, GuardStar, Hood traps and West Beetle traps)</p> <p>4- Feed colonies if light (colonies can starve!)</p> <p>5-Can treat for tracheal mites (mix vegetable oil and powdered sugar until doughy (not sticky to touch): place a pancake-sized patty on top bars of brood chamber.</p>	<p>Oct: Spanish Needle, Mexican Clover^N, Primrose Willow^N, Spotted Mint^N, Goldenrod^M, Vine Aster^N, Smart Weed^N, Bush AsterND</p> <p>^Ncontinues to bloom in November</p> <p>^Dcontinues to bloom in December</p> <p>Nov: Nothing new blooms</p> <p>Dec: Nothing new blooms</p>



Beekeepers of Volusia County, Florida

Meeting Agenda

February 22, 2012

Call to order and welcome:

Business:

- 2012 Membership Drive / Registrations / \$15.00 Renewals
- Treasurer's Report
- Receipt of the January 2012 Minutes is Pending

Presentations Discussions:

- Introduction and opening remarks by Marlin Athearn—President
- Discussion / Presentation by Mike Hayes—Vice President
- Discussion / Presentation by Tom Bartlett—Master Beekeeper
 1. Swarm management techniques—
 - Checker boarding
 - Swarm traps
 2. Hive Branding Irons
 3. Smoker Fuel—Pine needle bundles
 4. Pollen Party-on Can—Pollen substitute feeder
 - 5,
- Questions and open discussion

Adjournment

Beekeepers of Volusia County

Next Meeting

**Wednesday
February 22, 2012
6:30 PM**

**Volusia County Agricultural
Center Auditorium,
3100 E. New York Ave., Deland**

Check Out Our Website

www.beekeepersofvolusiacountyfl.com

Club Officers

President—Marlin Athearn—mjathearn@Volusia.k.12.fl.us— 386-428-0838

Vice President —Mike Hayes——jhays8@cfl.rr.com———386-671-3011

Treasurer ——Ron Kull———kullrp@yahoo.com———386-451-2978

Secretary — —Donna Balo———balo_d@hotmail.com———386-738-1954

Local Beekeeping Suppliers who are members of the Club

1. **Debs Beekeeping Supplies** – Hastings Fl. & Jacksonville Fl.
1-904-886-9389 & 1-877-703-DEBS
2. **North American Bee Hive Co.** - Jacksonville, Fl.—1-904-378-5006



“When someone shares something of value with you and you benefit from it, you have a moral obligation to share it with others.” ...

Chinese Proverb

BEEKEEPERS OF VOLUSIA COUNTY, FLORIDA

Minutes (not yet accepted)

Bee Meeting 01/25/12

called to order by Tom Bartlett, president @ 6:30pm—45 people in attendance

Video shown "City of Bees Tales from the Hive"

Discussion of time to elect new officers.

Tom Bartlett offered to continue to write the newsletter, requested others to volunteer

Tim Schoch maintains the website

Marlin Athearn nominated & elected president

Mike Hays nominated & elected vice-president

Ron Kull nominated & reelected treasurer

Donna Balo nominated & reelected secretary

Treasurers Report: \$1722.93

Halifax garden club donated \$100 Expenses: \$4.95 office supplies \$204 subscription

Discussion to increase the volume level of the projector

Discussion for the club to purchase an extractor for club use

Discussion of club hives that were donated 2y ago.

Discussion of lifetime membership and honorary membership

Discussion of an annual bee picnic

Discussion of having a day bee-assembly classes

Discussion of beginning bee keeping classes

Discussion of options to give help & assistance for new beekeepers. Tom Bartlett, Marlin Athearn, Mike Hays are in the Master BeeKeeper program & offered to help & assist.

Discussion of storing of equipment not in use

Upcoming events include

University of Florida Bee College is March 9 & 10 at Marineland

Nursery Peerless in DeLand, organic nursery looking for beekeeper

Pine Ridge HS. 15y anniversary of agriculture have always had beekeepers attend their annual agricultural fair

Upcoming beginner beekeeper classes by Mike Hays participating:

01/28/12 10am Flagler County - 02/11/12 Museum of Arts & Sciences in Daytona Beach 1pm

Meeting ended at 8:25 pm

Submitted by Donna Balo—Club Secretary

A farmer was on his way home when his truck ran out of gas on a county road, he got out of his truck to start walking when a honey bee landed on his shoulder, need some help the honey bee asked? The farmer replied I have run out of gas, the honey bee replied, my friends and I can help. Soon after a swarm of bees came out of the woods and flew into his gas tank, after a few minutes they flew out and returned to the woods, the honey bee remarked try to start the truck now. The farmer got in the truck and found his gas tank was full of gas again, the farmer called out thanks, by the way what kind of gas is this? The honey bee replied—BP

Businesses of Members



Full Moon Natives

Specializing in
Native & Waterwise Plants
Eco Landscape Designs
Butterfly Gardens

Kevin & Marvette Bagwell
386.212.9923
www.FullMoonNatives.com
1737 Fern Park Drive
Port Orange, FL 32128
kevinb@FullMoonNatives.com

1 mile west of
I-95/Dunlawton
Look for the Sun Totem

Mon-Wed by appointment
Thur-Fri 10:00-5:00
Saturday 8:00-4:00

TERRY L. ELLIS, President

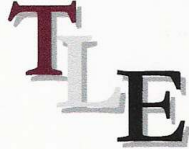
TLE CONSTRUCTION ENTERPRISES, INC.

GENERAL & ROOFING CONTRACTOR

COMMERCIAL RESIDENTIAL
LICENSED, INSURED & STATE CERTIFIED

Ormond Beach, Florida

Phone: 386 615 6575
Fax: 386 615 6501
Email: tleenterprises@cfl.rr.com
Website: www.TLEconstruction.com



VOLUSIA BUILDING INDUSTRY ASSOCIATION Builder Member

Clifton Farms, Inc.
Growers of Southern Peas & Green Peanuts

Jody & Carmen Clifton
Owners/Operators

6575 State Road #11
DeLeon Springs, Florida
32130

386 985-5142
386 717-0521 (C)
CAClifton2@aol.com



Deb's Bee Supply



**Hive Bodies, Supers,
Frames, Foundation,
Smokers, Hive Tools and More!**

(904) 886-9389



**OLD SAWMILL
ELECTRIC, INC.**

Donald Walker

Over 23 Years Experience
Industrial, Commercial & Residential
Service & Repairs

Licensed & Insured Cell: 386-566-6126
ER13014236 Home: 386-738-8690

S&S Apiaries **BEE REMOVAL**

Single Story Hives & 5 Frame Nucs
Pure Honey & More
FOR SALE



Jesse Azam
(386) 478-9722 Cell • (386) 427-6543 Fax
116 Riverside Terrace • Edgewater, FL 32141


Alysian Apiaries
Helping the environment one bee at a
time!

Honey bee removal
Bee sales
Honey
Hive products

407/ 417-1896

Scott MacMahon
Peggy MacMahon
Ian MacMahon

scottmacmahon@yahoo.com



“The bee is more honored than other animals, not because he labors, but because she labors for others—Saint John Chrysostom

Beekeepers of Volusia County, Florida

Membership Registration Form—2012

Name _____

Address _____

City _____ State _____ Zip Code _____

Telephone Number _____

E-mail address: Important - Much business is done by electronic mail

1. Regular Membership (includes family members) \$15.00 []
2. Lifetime membership—\$250.00

Please make checks payable to Beekeepers of Volusia County, Florida

Bring to meeting or mail to:

**Ron Kull, Treasurer, 2525 Palm Dr.
Port Orange, FL 32128,
Phone: 1-386-451-2978
E-mail: Kullrp@yahoo.com**

Meeting Information...