

Beekeepers of Volusia County Florida

**Founded
February 9, 2010**



Revised March 2012

President's Corner

**P
R
O
P
I
L
I
S**

_Hello Bee Keepers of Volusia Co.

It's been an action packed year so far and I don't think the train is going to slow down anytime soon. Spring is early this year and the plants and bees are jumping to life early as well. The bees have really been increasing early so here are some things that we should have been doing; 1. Inspect your hives and increase space as needed, 2. Create splits as needed to relieve congestion in the brood chamber, 3. Prepare for an increase in small hive beetles do to the warm winter.

Hives both feral and domestic are already swarming in large numbers; I have found queen cells in one of my hives and have been involved in removing two swarms in the past week. The plants are also a little active because of the weather, in my out yards there is saw palmetto already starting to bloom, over a month early.

The UF Bee College and Master Beekeeping program was earlier this month and they were both informative and challenging. The Beekeepers of Volusia Co. were well represented in both programs, our members passed tests and moved up in certification, won awards and were recognized by the beekeeping community.

See you in the Bee yard

Marlin Athearn—President Beekeepers of Volusia County

UF Master Beekeeper Program

Events of Interest to Beekeepers

February 22, 2012 ... Beekeepers of Volusia
County Meeting

University of Florida - Bee College - March 9th
and 10th, 2012

University of Florida Master Beekeeping
Exams Thursday, March 09, 2012

March 28, 2012 — Beekeepers of Volusia
County Meeting, 6:30pm

Check out the Full Moon Natives Web site for
great weekend seminars on a host of “Go
Green” topics. (Fullmoonnatives.com)

Annual Tupelo Honey Festival in
Wawahitchka, Florida, May 19, 2012

Cracker Creek—Beekeeping Class - Saturday
April 21th—Stay tuned for details as they
develope

April 25, 2012—Beekeepers of Volusia Country
Meeting, 6:30 pm



Common Honey Bee Races in North America

Italian—*Apis Mellifera Ligustica*—Most popular
bee—gentle & good producers—prone to
rob & drift

Cordovan—Subset of Italian—slightly more
gentle, more likely to rob, light tan in color
easy to find queen.

Caucasian—*Apis Mellifera Caucasia*, silver
gray in color, tend to propolis excessively.
About same productivity as Italians.

Carniolan—*Apis mellifera carnica*—dark
brown to black, better in northern climates.
Less productive than Italians

Russian—*Apis mellifera caucasica*—mite
Resistant, a bit defensive, Swarminess and
productivity are a bit more unpredictable. Traits are
not well fixed.

Buckfast—a mixture of bees developed by
Buckfast Abbey. Similar to Italian bees, fast
spring build up, resistant to tracheal mites

Reference—[Bushfarms.com/bee races](http://Bushfarms.com/bee_races)

Need Help? Call A Mentor!

Tom Bartlett: bartteb@aol.com—386-756-
2571

Marlin Athern : 386-428-0838
mjathear@volusia.k12.fl.us

**If you are an experienced beekeeper
please volunteer to help your club
mates.**

“The happiness of the bee and the dolphin is to exist For man it
is to know that and to wonder at it. Jacques Yves Cousteau

Florida Management Beekeeper Calendar – Central Florida

Used with permission of University of Florida Honey Bee Research and Extension Laboratory

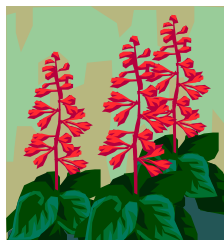
| Month | Management Calendar | Blooming Plants |
|--|--|--|
| January | 1- Feed colonies if light (colonies can starve!) 2- Nosema can be a significant colony problem this time of year. You can treat colonies for Nosema disease using Fumigillin. Colonies may need as much as 4 gallons of medicated syrup to control <i>Nosema ceranae</i> . 3- Repair/paint old equipment | Sand Pine ^F , Maple ^F , Willow ^{FM} F ^F continues to bloom in February FM ^{FM} continues to bloom in February and March |
| February | 1- Feed colonies if light (colonies can starve!) 2- Can treat colonies for Nosema disease using Fumigillin. 3- Can treat with Terramycin or Tylan for AFB. | Plum ^M , Cherry ^M , Oak ^M , Walther Viburnum ^M , Sweet Clover ^M , Blueberry ^M , Haw ^M , Fetterbush ^M M ^M continues to bloom in March |
| March Note: Citrus blooms in March. Make sure your colonies are ready. Talk with your growers about their pesticide habits. | 1- Attend UF Bee College in Marineland!!! 2- Colony Populations begin to grow! Add supers and/or control swarming as necessary. 3- Can treat with Terramycin or Tylan <i>dust</i> for AFB/EFB. 4- Make nucs/splits. | Orange, Spanish Needle |
| April | 1- Disease and queen problems should be remedied. 2- Make splits/nucs – new queens available 3- Control swarming 4- Add supers, the nectar flow began in late March | Orange, Sweet clover, Wild Blueberry, Haw, Fetterbush ^M , Spanish Needle ^{MJ} , Galberry ^M , Dog Hobble ^{MJ} , Palmetto ^{MJ} , Mexican Clover ^{MJ} , Butter Mint ^{MJ} M ^M continues to bloom in May J ^J continues to bloom in June MJ ^{MJ} continues to bloom in May and June |
| May | 1- Continue to inspect for colony maladies but don't treat for diseases while producing honey 2- Continue swarm control 3- Super as necessary | Palm ^J , Gopher Apple ^J , Joint Weed ^J , Sandhill Prairie Clover ^J , Spiderwort/Dayflower ^J J ^J continues to bloom in June |



Florida Management Beekeeper Calendar – Central Florida

Used with permission of University of Florida Honey Bee Research and Extension Laboratory

| Month | Management Calendar | Blooming Plants |
|--------------------|---|--|
| June | <p>1- Super as necessary for late flowers</p> <p>2- Varroa populations begin to grow – monitor colonies closely. The economic threshold is 60+ mites/day on a sticky screen or 17+ mites in an ether roll. Treat if you exceed these numbers.</p> | Mangrove, Red Bay, Cabbage Palm |
| July | <p>1- Remove and process honey – main flow stops</p> <p>2- Varroa populations begin to grow – monitor colonies closely. The economic threshold is 60+ mite/day on a sticky screen or 17+ mites in an ether roll for a colony of average strength. Treat if you exceed these numbers. Option include: Apigard, ApilifeVAR, Mite Away II.</p> | <p>Spanish Needle^{AS}, Palmetto, Mexican Clover^{AS}, Buttermint, Palm, Gopher Apple, Joint Weed^A, Redbay^{AS}, Sandhill Prairie Clover^A, Partridge Pea^A, Mangrove^A, Primrose Willow^{AS}, Spiderwort/Dayflower^{AS}</p> <p>^Acontinues to bloom in August ^{AS}continues to bloom in September</p> |
| August | <p>1- Monitor colonies for varroa (see July)!</p> <p>2- Treat with Terramycin <i>dust</i> for AFB/EFB</p> <p>3- Feed colonies if light</p> <p>4-Monitor for and control small hive beetles</p> <p>5- It's hot! Ensure adequate colony ventilation</p> | <p>Spotted Mint^S, Goldenrod^S, Vine Aster^S, Sumac^S</p> <p>^Scontinues to bloom in September</p> |
| September | <p>1- Monitor colonies for varroa (see July)!</p> <p>2- Super colonies if strong B. Pepper flow</p> <p>3- Consider treating colonies for Nosema disease using Fumidil-B. Colonies may need as much as 4 gallons of medicated syrup to control <i>Nosema cerana</i>.</p> <p>5- If no nectar flow, feed colonies if light</p> | <p>Smart Weed, Brazilian Pepper, Bush Aster</p> <p>Note: Brazilian Pepper blooms from September through October and is a significant fall source of nectar for bees.</p> |
| October – December | <p>1- Varroa populations peaked in Aug/Sept. The economic threshold is 60+ mites/day on a sticky board or 17+ mites in an ether roll for a colony of average strength. Treat if you exceed these numbers. Options include: Apiguard, ApilifeVAR, Mite Away II</p> <p>2- Can treat colonies for Nosema disease using Fumigillin. Colonies may need as much as 4 gallons of medicated syrup to control <i>Nosema cerana</i>.</p> <p>3-Monitor for and control small hive beetles (options include Checkmite+, GuardStar, Hood traps and West Beetle traps)</p> <p>4- Feed colonies if light (colonies can starve!)</p> <p>5-Can treat for tracheal mites (mix vegetable oil and powdered sugar until doughy (not sticky to touch): place a pancake-sized patty on top bars of brood chamber.</p> | <p>Oct: Spanish Needle, Mexican Clover^N, Primrose Willow^N, Spotted Mint^N, Goldenrod^M, Vine Aster^N, Smart Weed^N, Bush AsterND</p> <p>^Ncontinues to bloom in November</p> <p>^Dcontinues to bloom in December</p> <p>Nov: Nothing new blooms</p> <p>Dec: Nothing new blooms</p> |



Beekeepers of Volusia County, Florida

Meeting Agenda

March 28, 2012

Call to order and welcome:

Business:

- 2012 Membership Drive / Registrations / \$15.00 Renewals
- Treasurer's Report
- Approval of the January 2012 Minutes
- Approval of the February 2012 Minutes

Presentations Discussions:

- Introduction and opening remarks by Marlin Athearn—President
- Discussion / Presentation by Mike Hayes—Vice President
- Discussion / Presentation by Tom Bartlett—Master Beekeeper
 1. Smoker Fuel—Pine needle bundles
 2. Pollen Party-on Can—Pollen substitute feeder
- Questions and open discussion

Adjournment

Beekeepers of Volusia County

Next Meeting

**Tuesday
April 03, 2012
6:30 PM**

**Volusia County Agricultural
Center Auditorium,
3100 E. New York Ave., Deland**

Check Out Our Website

www.beekeepersofvolusiacountyfl.com

Club Officers

President—Marlin Athearn—mjathearn@Volusia.k.12.fl.us— 386-428-0838

Vice President —Mike Hayes——jhays8@cfl.rr.com———386-671-3011

Treasurer ——Ron Kull———kullrp@yahoo.com———386-451-2978

Secretary — —Donna Balo———balo_d@hotmail.com———386-738-1954

Local Beekeeping Suppliers who are members of the Club

1. **Debs Beekeeping Supplies** – Hastings Fl. & Jacksonville Fl.
1-904-886-9389 & 1-877-703-DEBS
2. **North American Bee Hive Co.** - Jacksonville, Fl.—1-904-378-5006



“When someone shares something of value with you and you benefit from it, you have a moral obligation to share it with others.” ...

Chinese Proverb

BEEKEEPERS OF VOLUSIA COUNTY, FLORIDA

Minutes (not yet accepted)

Bee Meeting 01/25/12

called to order by Tom Bartlett, president @ 6:30pm—45 people in attendance

Video shown "City of Bees Tales from the Hive"

Discussion of time to elect new officers.

Tom Bartlett offered to continue to write the newsletter, requested others to volunteer

Tim Schoch maintains the website

Marlin Athearn nominated & elected president

Mike Hays nominated & elected vice-president

Ron Kull nominated & reelected treasurer

Donna Balo nominated & reelected secretary

Treasurers Report: \$1722.93

Halifax garden club donated \$100 Expenses: \$4.95 office supplies \$204 subscription

Discussion to increase the volume level of the projector

Discussion for the club to purchase an extractor for club use

Discussion of club hives that were donated 2y ago.

Discussion of lifetime membership and honorary membership

Discussion of an annual bee picnic

Discussion of having a day bee-assembly classes

Discussion of beginning bee keeping classes

Discussion of options to give help & assistance for new beekeepers. Tom Bartlett, Marlin Athearn, Mike Hays are in the Master BeeKeeper program & offered to help & assist.

Discussion of storing of equipment not in use

Upcoming events include

University of Florida Bee College is March 9 & 10 at Marineland

Nursery Peerless in DeLand, organic nursery looking for beekeeper

Pine Ridge HS. 15y anniversary of agriculture have always had beekeepers attend their annual agricultural fair

Upcoming beginner beekeeper classes by Mike Hays participating:

01/28/12 10am Flagler County - 02/11/12 Museum of Arts & Sciences in Daytona Beach 1pm

Meeting ended at 8:25 pm

Submitted by Donna Balo—Club Secretary

A farmer was on his way home when his truck ran out of gas on a county road, he got out of his truck to start walking when a honey bee landed on his shoulder, need some help the honey bee asked? The farmer replied I have run out of gas, the honey bee replied, my friends and I can help. Soon after a swarm of bees came out of the woods and flew into his gas tank, after a few minutes they flew out and returned to the woods, the honey bee remarked try to start the truck now. The farmer got in the truck and found his gas tank was full of gas again, the farmer called out thanks, by the way what kind of gas is this? The honey bee replied—BP

Beekeepers of Volusia County Club Meeting 02/22/12

Called to order by Marlin Athearn, president @ 6:30pm

27 in attendance

Questions about spring: if 7 frames full of bees, time to add a new brood box

Treasury Report

\$1729.93

+ membership drive \$105

\$1827.93 balance

Tom Bartlett's term as president of the club has ended. An appreciation plaque was presented to Rita & Tom Bartlett along with a \$50 gift certificate to The Garlic in New Smyrna Beach.

Branding of hives - By Florida statute owners of beehives in FL are required to register their hives. Upon registration, a Florida Registration number is assigned to the beekeeper. It is a requirement to brand the outside of every hive. The required dimensions of the registration is a minimum of 1/2" in size. Experienced beekeepers also recommend branding the top & bottom boards of the frames.

Tom Bartlett showed a branding iron that a gentleman in Lakeland will make for \$75. Anyone interested can contact Tom Bartlett & prepay him & give him their registration number. Tom will order the branding irons.

More spring observations:

An increase in activity around the water source is a signal that the hive is growing.

Early swarming is happening now.

Check for queen cells.

Consider flipping boxes or alternate empty frames between existing frames to create the illusion that there is plenty of room in the hive.

University of Florida Bee College is March 9 & 10 at Marineland Park.

As the Beekeepers of Volusia County Club enters it's 3rd year Marlin has proposed the club begin focusing on increasing visibility in the community as well as educating the public about bees.

Members brainstormed. Suggestions of where to participate include:

Pioneer Arts Settlement in Barberville

Ladies Garden Clubs

Port Orange Days

Mike - is involved with the Arts & Science in Daytona Beach & the Ag Historical Museum Center in Flagler.

Tom Bartlett is working with a Halifax group that would like to put in an observation hive at the Daytona Beach Arts & Science Museum. Discussion about this possibility. It was voted to nominate cochairs Tom Bartlett & Marlin Athearn to investigate the plausibility & how the club could best serve this project.

Jesse Azam discussed the importance of hands on experiences for people interested in getting a bee hive. He recommended that perhaps each quarter all club members who have hives could open their hives & invite others to observe & learn about beekeeping.

Members are encouraged to take photos to send to local papers.

Logo & t-shirts for the club was discussed with recommendation to buy locally if it is decided to get club

Beekeepers of Volusia County Club Meeting 02/22/12—Contunued

Recommend an annual spring bee get together. Those that attended a spring bee get together a year ago talked about how beneficial it was especially to the newer beekeepers. Because the commercial beekeepers are very busy right now it was recommended to have a get together this year in mid to late April with a focus on learning to extract honey as well as observing open hives

Recommendation to announce when beekeepers are working in their hives to invite those interested to learn from the more experienced beekeepers

It was also recommended that the club decide what is the mission statement of the club.

Reimbursement for plaque & dinner voted & passed

Renewal of membership is now due. The cost is \$15 per family.

Adjourn 7:56pm

Submitted by Donna Balo, secretary

Businesses of Members



Full Moon Natives

Specializing in
Native & Waterwise Plants
Eco Landscape Designs
Butterfly Gardens

Kevin & Marvette Bagwell
386.212.9923
www.FullMoonNatives.com
1737 Fern Park Drive
Port Orange, FL 32128
kevinb@FullMoonNatives.com

1 mile west of
I-95/Dunlawton
Look for the Sun Totem

Mon-Wed by appointment
Thur-Fri 10:00-5:00
Saturday 8:00-4:00

TERRY L. ELLIS, President

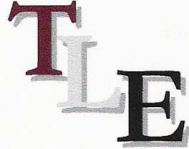
TLE CONSTRUCTION ENTERPRISES, INC.

GENERAL & ROOFING CONTRACTOR

COMMERCIAL RESIDENTIAL
LICENSED, INSURED & STATE CERTIFIED

Ormond Beach, Florida

Phone: 386 615 6575
Fax: 386 615 6501
Email: tleenterprises@cfl.rr.com
Website: www.TLEconstruction.com



VOLUSIA BUILDING INDUSTRY ASSOCIATION
Builder Member

Clifton Farms, Inc.
Growers of Southern Peas & Green Peanuts

Jody & Carmen Clifton
Owners/Operators

6575 State Road #11
DeLeon Springs, Florida
32130

386 985-5142
386 717-0521 (C)
CAClifton2@aol.com



Deb's Bee Supply

**Hive Bodies, Supers,
Frames, Foundation,
Smokers, Hive Tools and More!**

(904) 886-9389




**OLD SAWMILL
ELECTRIC, INC.**

Donald Walker

Over 23 Years Experience
Industrial, Commercial & Residential
Service & Repairs

Licensed & Insured Cell: 386-566-6126
ER13014236 Home: 386-738-8690

S&S Apiaries **BEE REMOVAL**

Single Story Hives & 5 Frame Nucs
Pure Honey & More
FOR SALE

Jesse Azam
(386) 478-9722 Cell • (386) 427-6543 Fax
116 Riverside Terrace • Edgewater, FL 32141



Alysian Apiaries
Helping the environment one bee at a
time!

Honey bee removal
Bee sales
Honey
Hive products

407/ 417-1896

Scott MacMahon
Peggy MacMahon
Ian MacMahon

scottmacmahon@yahoo.com



“The bee is more honored than other animals, not because he labors, but because she labors for others—Saint John Chrysostom

Beekeepers of Volusia County, Florida

Membership Registration Form—2012

Name _____

Address _____

City _____ State ____ Zip Code _____

Telephone Number _____

E-mail address: Important - Much business is done by electronic mail

1. Regular Membership (includes family members) \$15.00 []
2. Lifetime membership—\$250.00

Please make checks payable to Beekeepers of Volusia County, Florida

Bring to meeting or mail to:

**Ron Kull, Treasurer, 2525 Palm Dr.
Port Orange, FL 32128,
Phone: 1-386-451-2978
E-mail: Kullrp@yahoo.com**

Meeting Information...