

**Beekeepers
of
Volusia County
Florida**

**Founded
February 9, 2010**



April 2012

**President's
Corner**

**P
R
O
P
I
L
I
S**

_From the President's hive stand:

I would like to start off by thanking all of our members and family members for coming out and supporting our first, but not last, day in the bee yard. It appeared that everyone had fun and most came away learning something which is always a plus. A special thanks goes out to Mike and Tom for their efforts in the organizing, planning, and executing of the whole event as well as their particular classes. Cracker Creek was especially hospitable in that they charged us nothing for the use of their facility and basically gave us the run of the place as, well as allowing me to bring in and pick up my bee after hours in the dark.

Spring has been very busy in the bee yard. The warm winter gave our bees a real jump start on the spring, Tropical blossom said that his citrus honey has come out unusually dark this year but it still tastes great. Saw Palmetto has bloomed very early this year so the wild flower honey should be very interesting this spring. Keep an eye on the hive beetles this spring as many of them survived the winter. A strong hive is your best defense against most pests.

Lastly I am looking forward to Jason Graham's presentation on Wed. at our meeting, if you have never been to one of Jason's class on native bees and their habitats at the Bee College you are in for a real treat.

Best Wishes:

Marlin Athearn—President Beekeepers of Volusia County

**The informa-
tion that glues
us together**

Events of Interest to Beekeepers

April 25, 2012—Beekeepers of Volusia County Meeting, 6:30 pm

April 29, 2012—Spring Fling, Sugar Mill Gardens

Check out the Full Moon Natives Web site for great weekend seminars on a host of “Go Green” topics. (Fullmoonnatives.com)

Annual Tupelo Honey Festival in Wewahitchka, Florida, May 19, 2012



The Life Cycle of the Honey Bee

<u>Days</u>	<u>Cycle</u>	<u>Q</u>	<u>W</u>	<u>D</u>
1 thru 3	Period as Egg	X	X	X
4 thru 9	Period as Larvae	X	X	X
10 thru 15	Pupa Stage	X		
10 thru 20	Pupa Stage		X	
10 thru 23	Pupa Stage			X
16	Queen Emerges	X		
21	Worker Emerges		X	
24	Drone Emerges			X

Q-Queen, W-Worker, D-Drone

Worker Bee Tasks

1 thru 2	Cleaning Cells, Brood Warm
3 thru 5	Feed older Larae
6 thru 11	Feed Younger Larae
12 thru 17	Wax Building & Transporting Food
18 thru 21	Guarding Hive Entrance
22 thru 34	Visiting Flowers, Collecting Pollen, Nectar, Propolis & Water
35 thru 45	End of Life

Need Help? Call A Mentor!

Marlin Athern : 386-428-0838
mjathear@volusia.k12.fl.us

Tom Bartlett: beekeeper7501 @aol.com—
386-756-2571

Mike Hays: Jhays8@cfl.rr.com—386-671-
0311

“The happiness of the bee and the dolphin is to exist For man it is to know that and to wonder at it. Jacques Yves Cousteau

Florida Management Beekeeper Calendar – Central Florida

Used with permission of University of Florida Honey Bee Research and Extension Laboratory

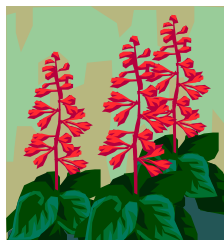
Month	Management Calendar	Blooming Plants
January	1- Feed colonies if light (colonies can starve!) 2- Nosema can be a significant colony problem this time of year. You can treat colonies for Nosema disease using Fumigillin. Colonies may need as much as 4 gallons of medicated syrup to control <i>Nosema ceranae</i> . 3- Repair/paint old equipment	Sand Pine ^F , Maple ^F , Willow ^{FM} F ^F continues to bloom in February FM ^{FM} continues to bloom in February and March
February	1- Feed colonies if light (colonies can starve!) 2- Can treat colonies for Nosema disease using Fumigillin. 3- Can treat with Terramycin or Tylan for AFB.	Plum ^M , Cherry ^M , Oak ^M , Walther Viburnum ^M , Sweet Clover ^M , Blueberry ^M , Haw ^M , Fetterbush ^M M ^M continues to bloom in March
March Note: Citrus blooms in March. Make sure your colonies are ready. Talk with your growers about their pesticide habits.	1- Attend UF Bee College in Marineland!!! 2- Colony Populations begin to grow! Add supers and/or control swarming as necessary. 3- Can treat with Terramycin or Tylan <i>dust</i> for AFB/EFB. 4- Make nucs/splits.	Orange, Spanish Needle
April	1- Disease and queen problems should be remedied. 2- Make splits/nucs – new queens available 3- Control swarming 4- Add supers, the nectar flow began in late March	Orange, Sweet clover, Wild Blueberry, Haw, Fetterbush ^M , Spanish Needle ^{MJ} , Galberry ^M , Dog Hobble ^{MJ} , Palmetto ^{MJ} , Mexican Clover ^{MJ} , Butter Mint ^{MJ} M ^M continues to bloom in May J ^J continues to bloom in June MJ ^{MJ} continues to bloom in May and June
May	1- Continue to inspect for colony maladies but don't treat for diseases while producing honey 2- Continue swarm control 3- Super as necessary	Palm ^J , Gopher Apple ^J , Joint Weed ^J , Sandhill Prairie Clover ^J , Spiderwort/Dayflower ^J J ^J continues to bloom in June



Florida Management Beekeeper Calendar – Central Florida

Used with permission of University of Florida Honey Bee Research and Extension Laboratory

Month	Management Calendar	Blooming Plants
June	1- Super as necessary for late flowers 2- Varroa populations begin to grow – monitor colonies closely. The economic threshold is 60+ mites/day on a sticky screen or 17+ mites in an ether roll. Treat if you exceed these numbers.	Mangrove, Red Bay, Cabbage Palm
July	1- Remove and process honey – main flow stops 2- Varroa populations begin to grow – monitor colonies closely. The economic threshold is 60+ mite/day on a sticky screen or 17+ mites in an ether roll for a colony of average strength. Treat if you exceed these numbers. Option include: Apigard, ApilifeVAR, Mite Away II.	Spanish Needle ^{AS} , Palmetto, Mexican Clover ^{AS} , Buttermint, Palm, Gopher Apple, Joint Weed ^A , Redbay ^{AS} , Sandhill Prairie Clover ^A , Partridge Pea ^A , Mangrove ^A , Primrose Willow ^{AS} , Spiderwort/Dayflower ^{AS} ^A continues to bloom in August ^{AS} continues to bloom in September
August	1- Monitor colonies for varroa (see July)! 2- Treat with Terramycin <i>dust</i> for AFB/EFB 3- Feed colonies if light 4-Monitor for and control small hive beetles 5- It's hot! Ensure adequate colony ventilation	Spotted Mint ^S , Goldenrod ^S , Vine Aster ^S , Sumac ^S ^S continues to bloom in September
September	1- Monitor colonies for varroa (see July)! 2- Super colonies if strong B. Pepper flow 3- Consider treating colonies for Nosema disease using Fumidil-B. Colonies may need as much as 4 gallons of medicated syrup to control <i>Nosema cerana</i> . 5- If no nectar flow, feed colonies if light	Smart Weed, Brazilian Pepper, Bush Aster Note: Brazilian Pepper blooms from September through October and is a significant fall source of nectar for bees.
October – December	1- Varroa populations peaked in Aug/Sept. The economic threshold is 60+ mites/day on a sticky board or 17+ mites in an ether roll for a colony of average strength . Treat if you exceed these numbers. Options include: Apiguard, ApilifeVAR, Mite Away II 2- Can treat colonies for Nosema disease using Fumigillin. Colonies may need as much as 4 gallons of medicated syrup to control <i>Nosema cerana</i> . 3-Monitor for and control small hive beetles (options include Checkmite+, GuardStar, Hood traps and West Beetle traps) 4- Feed colonies if light (colonies can starve!) 5-Can treat for tracheal mites (mix vegetable oil and powdered sugar until doughy (not sticky to touch): place a pancake-sized patty on top bars of brood chamber.	Oct: Spanish Needle, Mexican Clover ^N , Primrose Willow ^N , Spotted Mint ^N , Goldenrod ^M , Vine Aster ^N , Smart Weed ^N , Bush Aster ND ^N continues to bloom in November ^D continues to bloom in December Nov: Nothing new blooms Dec: Nothing new blooms



Beekeepers of Volusia County, Florida

Meeting Agenda

April 25, 2012

Call to order and welcome:

Business:

- 2012 Membership Drive / Registrations / \$15.00 Renewals
- Treasurer's Report
- Approval of the March Minutes

Presentations Discussions:

- Introduction and opening remarks by Marlin Athearn—President
- Postpone club insignia topic until May meeting
- After action review of our day in the Bee Yard
- Update on the "club hive"
- Jason Graham's presentation
- Open discussion

Beekeepers of Volusia County

Next Meeting

**Wednesday
April 25, 2012
6:30 PM**

**Volusia County Agricultural
Center Auditorium,
3100 E. New York Ave., Deland**

Check Out Our Website

www.beekeepersofvolusiacountyfl.com

Club Officers

President—Marlin Athearn—mjathearn@Volusia.k.12.fl.us— 386-428-0838

Vice President —Mike Hays——jhays8@cfl.rr.com———386-671-3011

Treasurer ——Ron Kull———kullrp@yahoo.com———386-451-2978

Secretary — —Donna Balo———balo_d@hotmail.com———386-738-1954

Local Beekeeping Suppliers who are members of the Club

1. **Debs Beekeeping Supplies** – Hastings Fl. & Jacksonville Fl.
1-904-886-9389 & 1-877-703-DEBS
2. **North American Bee Hive Co.** - Jacksonville, Fl.—1-904-378-5006
3. **Jester Bee Co.**— Mims, Fl. Nucs, Queens, Queen Cells—Kevin@Jesterbee.com
Please call us at : 870 243 1596 with your order.



“When someone shares something of value with you and you benefit from it, you have a moral obligation to share it with others.” ...

Chinese Proverb

BEEKEEPERS OF VOLUSIA COUNTY, FLORIDA

Minutes (not yet accepted)

Beekeepers of Volusia County Club Meeting Minutes of 04/03/12

Called to order by Marlin Athearn, president @ 6:30pm

43 in attendance

Prior minutes approved

Treasury Report - Not given

Club membership renewal is now due.

Membership is \$15 per family.

A member list will be updated.

More newsletters are sent out then there are members.

In the pursuit of a Beekeepers of Volusia County club logo - ideas were discussed which will be refined in the months ahead.

It was generally agreed to include "Established 2009."

A bee & a flower on the logo were also popular

Discussion about Bee College, Marlin announced that the club was well represented.

"Tools by Tom" presented by Tom Bartlett

Solar melter to melt wax

Pollen Feeder - Mega Bee to apply in late winter & early fall

Beetle case using a CD holder

Hive beetle trap holder

Pine needle cartridge

Jason Graham will be speaking at the next club meeting

The club bee hive was discussed. Members inquired as to where the hives are located & what should be done with it. Marlin stated this would be discussed further at another time.

Club Bee Class Day at Cracker Creek in Spruce Creek will be Saturday April 21 9am - noon. No cost. Members, family & friends are invited. Estimate of 30-40 will be in attendance.

Small table break-out discussions for members to share ideas & ask each other questions.

Adjourn 7:56pm

Submitted by Donna Balo, secretary

A farmer was on his way home when his truck ran out of gas on a county road, he got out of his truck to start walking when a honey bee landed on his shoulder, need some help the honey bee asked? The farmer replied I have run out of gas, the honey bee replied, my friends and I can help. Soon after a swarm of bees came out of the woods and flew into his gas tank, after a few minutes they flew out and returned to the woods, the honey bee remarked try to start the truck now. The farmer got in the truck and found his gas tank was full of gas again, the farmer called out thanks, by the way what kind of gas is this? The honey bee replied—BP

Businesses of Members



Full Moon Natives

Specializing in
Native & Waterwise Plants
Eco Landscape Designs
Butterfly Gardens

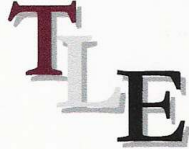
Kevin & Marvette Bagwell
386.212.9923
www.FullMoonNatives.com
1737 Fern Park Drive
Port Orange, FL 32128
kevinb@FullMoonNatives.com

1 mile west of
I-95/Dunlawton
Look for the Sun Totem

Mon-Wed by appointment
Thur-Fri 10:00-5:00
Saturday 8:00-4:00

TERRY L. ELLIS, President

TLE CONSTRUCTION ENTERPRISES, INC.
GENERAL & ROOFING CONTRACTOR
COMMERCIAL RESIDENTIAL
LICENSED, INSURED & STATE CERTIFIED



Ormond Beach, Florida

Phone: 386 615 6575
Fax: 386 615 6501
Email: tleenterprises@cfl.rr.com
Website: www.TLEconstruction.com

VOLUSIA BUILDING INDUSTRY ASSOCIATION
Builder Member

Clifton Farms, Inc.
Growers of Southern Peas & Green Peanuts



Jody & Carmen Clifton
Owners/Operators

6575 State Road #11
DeLeon Springs, Florida
32130

386 985-5142
386 717-0521 (C)
CAClifton2@aol.com

Deb's Bee Supply



**Hive Bodies, Supers,
Frames, Foundation,
Smokers, Hive Tools and More!**
(904) 886-9389



**OLD SAWMILL
ELECTRIC, INC.**

Donald Walker

Over 23 Years Experience
Industrial, Commercial & Residential
Service & Repairs

Licensed & Insured Cell: 386-566-6126
ER13014236 Home: 386-738-8690

S&S Apiaries **BEE REMOVAL**

Single Story Hives & 5 Frame Nucs
Pure Honey & More
FOR SALE



Jesse Azam
(386) 478-9722 Cell • (386) 427-6543 Fax
116 Riverside Terrace • Edgewater, FL 32141

Alysian Apiaries
Helping the environment one bee at a
time!



Honey bee removal
Bee sales
Honey
Hive products

Scott MacMahon 407/ 417-1896
Peggy MacMahon
Ian MacMahon scottmacmahon@yahoo.com

“The bee is more honored than other animals, not because he labors, but because she labors for others—Saint John Chrysostom

Beekeepers of Volusia County, Florida

Membership Registration Form—2012

Name

Address

City _____ **State** ____ **Zip Code**

Telephone Number _____

E-mail address: Important - Much business is done by electronic mail

- 1. Regular Membership (includes family members) \$15.00 []**
- 2. Lifetime membership—\$250.00**

Please make checks payable to Beekeepers of Volusia County, Florida

Bring to meeting or mail to:

**Ron Kull, Treasurer, 2525 Palm Dr.
Port Orange, FL 32128,
Phone: 1-386-451-2978
E-mail: Kullrp@yahoo.com**

Meeting Information...