

**Beekeepers
of
Volusia County
Florida**

**Founded
February 9, 2010**



May 2012

**President's
Corner**

**P
R
O
P
I
L
I
S**

_From the President's hive stand:

I would like to start off by thanking all of our members and family members for coming out and supporting our first, but not last, day in the bee yard. It appeared that everyone had fun and most came away learning something which is always a plus. A special thanks goes out to Mike and Tom for their efforts in the organizing, planning, and executing of the whole event as well as their particular classes. Cracker Creek was especially hospitable in that they charged us nothing for the use of their facility and basically gave us the run of the place as, well as allowing me to bring in and pick up my bee after hours in the dark.

Spring has been very busy in the bee yard. The warm winter gave our bees a real jump start on the spring, Tropical blossom said that his citrus honey has come out unusually dark this year but it still tastes great. Saw Palmetto has bloomed very early this year so the wild flower honey should be very interesting this spring. Keep an eye on the hive beetles this spring as many of them survived the winter. A strong hive is your best defense against most pests.

Best Wishes:

Marlin Athearn—President Beekeepers of Volusia County

Events of Interest to Beekeepers

May 23, 2012—Beekeepers of Volusia Country Meeting, 6:30 pm

Check out the Full Moon Natives Web site for great weekend seminars on a host of “Go Green” topics. (Fullmoonnatives.com)

June 27, 2012—Beekeepers of Volusia Country Meeting, 6:30 pm



The Life Cycle of the Honey Bee

<u>Days</u>	<u>Cycle</u>	<u>Q</u>	<u>W</u>	<u>D</u>
1 thru 3	Period as Egg	X	X	X
4 thru 9	Period as Larvae	X	X	X
10 thru 15	Pupa Stage	X		
10 thru 20	Pupa Stage		X	
10 thru 23	Pupa Stage			X
16	Queen Emerges	X		
21	Worker Emerges		X	
24	Drone Emerges			X

Q-Queen, W-Worker, D-Drone

Worker Bee Tasks

1 thru 2	Cleaning Cells, Brood Warm
3 thru 5	Feed older Larae
6 thru 11	Feed Younger Larae
12 thru 17	Wax Building & Transporting Food
18 thru 21	Guarding Hive Entrance
22 thru 34	Visiting Flowers, Collecting Pollen, Nectar, Propolis & Water
35 thru 45	End of Life

Need Help? Call A Mentor!

Marlin Athern : 386-428-0838
mjathear@volusia.k12.fl.us

Tom Bartlett: beekeeper7501 @aol.com—
386-756-2571

Mike Hays: Jhays8@cfl.rr.com—386-671-
0311

“The happiness of the bee and the dolphin is to exist For man it is to know that and to wonder at it. Jacques Yves Cousteau

Florida Management Beekeeper Calendar – Central Florida

Used with permission of University of Florida Honey Bee Research and Extension Laboratory

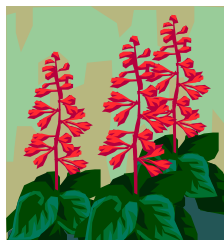
Month	Management Calendar	Blooming Plants
January	1- Feed colonies if light (colonies can starve!) 2- Nosema can be a significant colony problem this time of year. You can treat colonies for Nosema disease using Fumigillin. Colonies may need as much as 4 gallons of medicated syrup to control <i>Nosema ceranae</i> . 3- Repair/paint old equipment	Sand Pine ^F , Maple ^F , Willow ^{FM} F ^F continues to bloom in February FM ^{FM} continues to bloom in February and March
February	1- Feed colonies if light (colonies can starve!) 2- Can treat colonies for Nosema disease using Fumigillin. 3- Can treat with Terramycin or Tylan for AFB.	Plum ^M , Cherry ^M , Oak ^M , Walther Viburnum ^M , Sweet Clover ^M , Blueberry ^M , Haw ^M , Fetterbush ^M M ^M continues to bloom in March
March Note: Citrus blooms in March. Make sure your colonies are ready. Talk with your growers about their pesticide habits.	1- Attend UF Bee College in Marineland!!! 2- Colony Populations begin to grow! Add supers and/or control swarming as necessary. 3- Can treat with Terramycin or Tylan <i>dust</i> for AFB/EFB. 4- Make nucs/splits.	Orange, Spanish Needle
April	1- Disease and queen problems should be remedied. 2- Make splits/nucs – new queens available 3- Control swarming 4- Add supers, the nectar flow began in late March	Orange, Sweet clover, Wild Blueberry, Haw, Fetterbush ^M , Spanish Needle ^{MJ} , Galberry ^M , Dog Hobble ^{MJ} , Palmetto ^{MJ} , Mexican Clover ^{MJ} , Butter Mint ^{MJ} M ^M continues to bloom in May J ^J continues to bloom in June MJ ^{MJ} continues to bloom in May and June
May	1- Continue to inspect for colony maladies but don't treat for diseases while producing honey 2- Continue swarm control 3- Super as necessary	Palm ^J , Gopher Apple ^J , Joint Weed ^J , Sandhill Prairie Clover ^J , Spiderwort/Dayflower ^J J ^J continues to bloom in June



Florida Management Beekeeper Calendar – Central Florida

Used with permission of University of Florida Honey Bee Research and Extension Laboratory

Month	Management Calendar	Blooming Plants
June	<p>1- Super as necessary for late flowers</p> <p>2- Varroa populations begin to grow – monitor colonies closely. The economic threshold is 60+ mites/day on a sticky screen or 17+ mites in an ether roll. Treat if you exceed these numbers.</p>	Mangrove, Red Bay, Cabbage Palm
July	<p>1- Remove and process honey – main flow stops</p> <p>2- Varroa populations begin to grow – monitor colonies closely. The economic threshold is 60+ mite/day on a sticky screen or 17+ mites in an ether roll for a colony of average strength. Treat if you exceed these numbers. Option include: Apigard, ApilifeVAR, Mite Away II.</p>	<p>Spanish Needle^{AS}, Palmetto, Mexican Clover^{AS}, Buttermint, Palm, Gopher Apple, Joint Weed^A, Redbay^{AS}, Sandhill Prairie Clover^A, Partridge Pea^A, Mangrove^A, Primrose Willow^{AS}, Spiderwort/Dayflower^{AS}</p> <p>^Acontinues to bloom in August ^{AS}continues to bloom in September</p>
August	<p>1- Monitor colonies for varroa (see July)!</p> <p>2- Treat with Terramycin <i>dust</i> for AFB/EFB</p> <p>3- Feed colonies if light</p> <p>4-Monitor for and control small hive beetles</p> <p>5- It's hot! Ensure adequate colony ventilation</p>	<p>Spotted Mint^S, Goldenrod^S, Vine Aster^S, Sumac^S</p> <p>^Scontinues to bloom in September</p>
September	<p>1- Monitor colonies for varroa (see July)!</p> <p>2- Super colonies if strong B. Pepper flow</p> <p>3- Consider treating colonies for Nosema disease using Fumidil-B. Colonies may need as much as 4 gallons of medicated syrup to control <i>Nosema cerana</i>.</p> <p>5- If no nectar flow, feed colonies if light</p>	<p>Smart Weed, Brazilian Pepper, Bush Aster</p> <p>Note: Brazilian Pepper blooms from September through October and is a significant fall source of nectar for bees.</p>
October – December	<p>1- Varroa populations peaked in Aug/Sept. The economic threshold is 60+ mites/day on a sticky board or 17+ mites in an ether roll for a colony of average strength. Treat if you exceed these numbers. Options include: Apiguard, ApilifeVAR, Mite Away II</p> <p>2- Can treat colonies for Nosema disease using Fumigillin. Colonies may need as much as 4 gallons of medicated syrup to control <i>Nosema cerana</i>.</p> <p>3-Monitor for and control small hive beetles (options include Checkmite+, GuardStar, Hood traps and West Beetle traps)</p> <p>4- Feed colonies if light (colonies can starve!)</p> <p>5-Can treat for tracheal mites (mix vegetable oil and powdered sugar until doughy (not sticky to touch): place a pancake-sized patty on top bars of brood chamber.</p>	<p>Oct: Spanish Needle, Mexican Clover^N, Primrose Willow^N, Spotted Mint^N, Goldenrod^M, Vine Aster^N, Smart Weed^N, Bush AsterND</p> <p>^Ncontinues to bloom in November</p> <p>^Dcontinues to bloom in December</p> <p>Nov: Nothing new blooms</p> <p>Dec: Nothing new blooms</p>



Beekeepers of Volusia County, Florida

Meeting Agenda

May 23, 2012

Call to order and welcome:

Business:

- 2012 Membership Drive / Registrations / \$15.00 Renewals
- Treasurer's Report
- Approval of the April Minutes

Presentations Discussions:

- Introduction and opening remarks by Marlin Athearn—President
- Club insignia topic
- Open discussion

Beekeepers of Volusia County

Next Meeting

**Wednesday
May 23, 2012
6:30 PM**

**Volusia County Agricultural
Center Auditorium,
3100 E. New York Ave., Deland**

Check Out Our Website

www.beekeepersofvolusiacountyfl.com

Club Officers

President—Marlin Athearn—mjathearn@Volusia.k.12.fl.us— 386-428-0838

Vice President —Mike Hays——jhays8@cfl.rr.com———386-671-3011

Treasurer ——Ron Kull———kullrp@yahoo.com———386-451-2978

Secretary — —Donna Balo———balo_d@hotmail.com———386-738-1954

Local Beekeeping Suppliers who are members of the Club

1. **Debs Beekeeping Supplies** – Hastings Fl. & Jacksonville Fl.
1-904-886-9389 & 1-877-703-DEBS
2. **North American Bee Hive Co.** - Jacksonville, Fl.—1-904-378-5006
3. **Jester Bee Co.**— Mims, Fl. Nucs, Queens, Queen Cells—Kevin@Jesterbee.com
Please call us at : 870 243 1596 with your order.



“When someone shares something of value with you and you benefit from it, you have a moral obligation to share it with others.” ...

Chinese Proverb

BEEKEEPERS OF VOLUSIA COUNTY, FLORIDA

Minutes (not yet accepted)

Beekeepers of Volusia County Club Meeting

April 2012

Called to order by Marlin Athearn, president @ 6:37pm

45 in attendance

Prior minutes approved

Treasury Report - \$1970

FL State Beekeepers \$15/year see the treasurer for application forms

Recommendation that the Club organize to visit local like legislations "Right to Farm"

A Day in the Bee Yard was a success. Discussion that a similar gathering quarterly would be a worthwhile goal. Suggestions of future workshops or stations to feature are welcome.

A logo for the club is still being considered. Members are invited to bring suggestions & recommendations to the next meeting.

Marlin announced that the Club hive has been found housed in DeLand & it is very productive. 4H has been tending & learning from the hive. An agreement has been reached to split the hive between 4H & the Club. The future site for the Club hive will be decided at a later date.

A guest brought a 1938 Cook Book by UF University of FL extension service & old Cookbook that included recipes using honey. A sample of honey based cookies was passed around for a taste test.

Jason R. Graham PhD candidate from the University of FL Honey Bee Research & Extension Laboratory gave a presentation about his ongoing research on Honey Bees. His Masters degree was earned with research on the small hive beetles . He stated that small hive beetles are attracted to both honey bee hives & bumble bee hives. His interests and research includes researching & educating the public about native bees and pollinators.

The importance & usefulness of an EpiPen for allergic reactions to bee stings was discussed. A recommendation was made that beekeepers should consider taking a course & getting the necessary prescription required to own and administer the EpiPen.

Adjourned 7:56pm

A farmer was on his way home when his truck ran out of gas on a county road, he got out of his truck to start walking when a honey bee landed on his shoulder, need some help the honey bee asked? The farmer replied I have run out of gas, the honey bee replied, my friends and I can help. Soon after a swarm of bees came out of the woods and flew into his gas tank, after a few minutes they flew out and returned to the woods, the honey bee remarked try to start the truck now. The farmer got in the truck and found his gas tank was full of gas again, the farmer called out thanks, by the way what kind of gas is this? The honey bee replied—BP

Businesses of Members



Full Moon Natives

Specializing in
Native & Waterwise Plants
Eco Landscape Designs
Butterfly Gardens

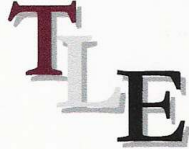
Kevin & Marvette Bagwell
386.212.9923
www.FullMoonNatives.com
1737 Fern Park Drive
Port Orange, FL 32128
kevinb@FullMoonNatives.com

1 mile west of
I-95/Dunlawton
Look for the Sun Totem

Mon-Wed by appointment
Thur-Fri 10:00-5:00
Saturday 8:00-4:00

TERRY L. ELLIS, President

TLE CONSTRUCTION ENTERPRISES, INC.
GENERAL & ROOFING CONTRACTOR
COMMERCIAL RESIDENTIAL
LICENSED, INSURED & STATE CERTIFIED



Ormond Beach, Florida

Phone: 386 615 6575
Fax: 386 615 6501
Email: tleenterprises@cfl.rr.com
Website: www.TLEconstruction.com

VOLUSIA BUILDING INDUSTRY ASSOCIATION
Builder Member

Clifton Farms, Inc.
Growers of Southern Peas & Green Peanuts



Jody & Carmen Clifton
Owners/Operators

6575 State Road #11
DeLeon Springs, Florida
32130

386 985-5142
386 717-0521 (C)
CAClifton2@aol.com

Deb's Bee Supply



**Hive Bodies, Supers,
Frames, Foundation,
Smokers, Hive Tools and More!**
(904) 886-9389



**OLD SAWMILL
ELECTRIC, INC.**

Donald Walker

Over 23 Years Experience
Industrial, Commercial & Residential
Service & Repairs

Licensed & Insured Cell: 386-566-6126
ER13014236 Home: 386-738-8690

S&S Apiaries **BEE REMOVAL**

Single Story Hives & 5 Frame Nucs
Pure Honey & More
FOR SALE



Jesse Azam
(386) 478-9722 Cell • (386) 427-6543 Fax
116 Riverside Terrace • Edgewater, FL 32141

Alysian Apiaries
Helping the environment one bee at a
time!



Honey bee removal
Bee sales
Honey
Hive products

Scott MacMahon 407/ 417-1896
Peggy MacMahon
Ian MacMahon scottmacmahon@yahoo.com

“The bee is more honored than other animals, not because he labors, but because she labors for others—Saint John Chrysostom

Beekeeping —Classifieds

Honey Extractor rental and Honey Extraction Services call—Tom Bartlett—386-756-2571

**Volusia Country Brushy Mountain Beekeeping Supply Dealer Prices— Tom Bartlett—
386-756-2571**

2—Two year old hives to sell, All the extras. Al Evans—386-532-4614

**4 Frame Home made Extractor for sale \$100—Guy Johnson—
johnsonguysharon@bellsouth.net**

Tupelo Honey from the 2012 Tupelo Honey Festival—Tom Bartlett—386-756-2571

**Want to sell Beekeeping related goods or services? E-mail the Newsletter at
Beekeeper7501@aol.com**

Beekeepers of Volusia County, Florida

Membership Registration Form—2012

Name _____

Address _____

City _____ State _____ Zip Code _____

Telephone Number _____

E-mail address: Important - Much business is done by electronic mail

1. Regular Membership (includes family members) \$15.00 []
2. Lifetime membership—\$250.00

Please make checks payable to Beekeepers of Volusia County, Florida

Bring to meeting or mail to:

**Ron Kull, Treasurer, 2525 Palm Dr.
Port Orange, FL 32128,
Phone: 1-386-451-2978
E-mail: Kullrp@yahoo.com**

Meeting Information...