

**Founded
February 9, 2010**



**Beekeepers
of
Volusia County
Florida**

June 2012

President's Corner

**P
R
O
P
I
L
I
S**

_From the President's hive stand:

Sorry folks, Marlin is on vacation and did not forward a Presidents letter for the June Newsletter.

Mike Hays, Our Vice President will be hosting the meeting.

Best Wishes:

Marlin Athearn—President Beekeepers of Volusia County

Events of Interest to Beekeepers

June 27, 2012—Beekeepers of Volusia County Meeting, 6:30 pm, at the Volusia County Ag Center

Check out the Full Moon Natives Web site for great weekend seminars on a host of “Go Green” topics. (Fullmoonnatives.com)

July 25, 2012—Beekeepers of Volusia County Meeting, 6:30pm, at the Volusia County Ag Center

The Life Cycle of the Honey Bee

<u>Days</u>	<u>Cycle</u>	<u>Q</u>	<u>W</u>	<u>D</u>
1 thru 3	Period as Egg	X	X	X
4 thru 9	Period as Larvae	X	X	X
10 thru 15	Pupa Stage	X		
10 thru 20	Pupa Stage		X	
10 thru 23	Pupa Stage			X
16	Queen Emerges	X		
21	Worker Emerges		X	
24	Drone Emerges			X

Q-Queen, W-Worker, D-Drone

Worker Bee Tasks

1 thru 2	Cleaning Cells, Brood Warm
3 thru 5	Feed older Larae
6 thru 11	Feed Younger Larae
12 thru 17	Wax Building & Transporting Food
18 thru 21	Guarding Hive Entrance
22 thru 34	Visiting Flowers, Collecting Pollen, Nectar, Propolis & Water
35 thru 45	End of Life



Need Help? Call A Mentor!

Marlin Athern : 386-428-0838
mjathear@volusia.k12.fl.us—New Smyrna Beach

Tom Bartlett: beekeeper7501 @aol.com—386-756-2571—Port Orange

Don Kent: Dongonekent@gmail.com, 386-672-0995—Ormond Beach

Mike Hays: Jhays8@cfl.rr.com—386-671-Or0311—Ormond Beach

“The happiness of the bee and the dolphin is to exist For man it is to know that and to wonder at it. Jacques Yves Cousteau

Florida Management Beekeeper Calendar – Central Florida

Used with permission of University of Florida Honey Bee Research and Extension Laboratory

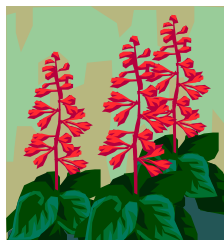
Month	Management Calendar	Blooming Plants
January	1- Feed colonies if light (colonies can starve!) 2- Nosema can be a significant colony problem this time of year. You can treat colonies for Nosema disease using Fumigillin. Colonies may need as much as 4 gallons of medicated syrup to control <i>Nosema ceranae</i> . 3- Repair/paint old equipment	Sand Pine ^F , Maple ^F , Willow ^{FM} F ^F continues to bloom in February FM ^{FM} continues to bloom in February and March
February	1- Feed colonies if light (colonies can starve!) 2- Can treat colonies for Nosema disease using Fumigillin. 3- Can treat with Terramycin or Tylan for AFB.	Plum ^M , Cherry ^M , Oak ^M , Walther Viburnum ^M , Sweet Clover ^M , Blueberry ^M , Haw ^M , Fetterbush ^M M ^M continues to bloom in March
March Note: Citrus blooms in March. Make sure your colonies are ready. Talk with your growers about their pesticide habits.	1- Attend UF Bee College in Marineland!!! 2- Colony Populations begin to grow! Add supers and/or control swarming as necessary. 3- Can treat with Terramycin or Tylan <i>dust</i> for AFB/EFB. 4- Make nucs/splits.	Orange, Spanish Needle
April	1- Disease and queen problems should be remedied. 2- Make splits/nucs – new queens available 3- Control swarming 4- Add supers, the nectar flow began in late March	Orange, Sweet clover, Wild Blueberry, Haw, Fetterbush ^M , Spanish Needle ^{MJ} , Galberry ^M , Dog Hobble ^{MJ} , Palmetto ^{MJ} , Mexican Clover ^{MJ} , Butter Mint ^{MJ} M ^M continues to bloom in May J ^J continues to bloom in June MJ ^{MJ} continues to bloom in May and June
May	1- Continue to inspect for colony maladies but don't treat for diseases while producing honey 2- Continue swarm control 3- Super as necessary	Palm ^J , Gopher Apple ^J , Joint Weed ^J , Sandhill Prairie Clover ^J , Spiderwort/Dayflower ^J J ^J continues to bloom in June



Florida Management Beekeeper Calendar – Central Florida

Used with permission of University of Florida Honey Bee Research and Extension Laboratory

Month	Management Calendar	Blooming Plants
June	<p>1- Super as necessary for late flowers</p> <p>2- Varroa populations begin to grow – monitor colonies closely. The economic threshold is 60+ mites/day on a sticky screen or 17+ mites in an ether roll. Treat if you exceed these numbers.</p>	Mangrove, Red Bay, Cabbage Palm
July	<p>1- Remove and process honey – main flow stops</p> <p>2- Varroa populations begin to grow – monitor colonies closely. The economic threshold is 60+ mite/day on a sticky screen or 17+ mites in an ether roll for a colony of average strength. Treat if you exceed these numbers. Option include: Apigard, ApilifeVAR, Mite Away II.</p>	<p>Spanish Needle^{AS}, Palmetto, Mexican Clover^{AS}, Buttermint, Palm, Gopher Apple, Joint Weed^A, Redbay^{AS}, Sandhill Prairie Clover^A, Partridge Pea^A, Mangrove^A, Primrose Willow^{AS}, Spiderwort/Dayflower^{AS}</p> <p>^Acontinues to bloom in August ^{AS}continues to bloom in September</p>
August	<p>1- Monitor colonies for varroa (see July)!</p> <p>2- Treat with Terramycin <i>dust</i> for AFB/EFB</p> <p>3- Feed colonies if light</p> <p>4-Monitor for and control small hive beetles</p> <p>5- It's hot! Ensure adequate colony ventilation</p>	<p>Spotted Mint^S, Goldenrod^S, Vine Aster^S, Sumac^S</p> <p>^Scontinues to bloom in September</p>
September	<p>1- Monitor colonies for varroa (see July)!</p> <p>2- Super colonies if strong B. Pepper flow</p> <p>3- Consider treating colonies for Nosema disease using Fumidil-B. Colonies may need as much as 4 gallons of medicated syrup to control <i>Nosema cerana</i>.</p> <p>5- If no nectar flow, feed colonies if light</p>	<p>Smart Weed, Brazilian Pepper, Bush Aster</p> <p>Note: Brazilian Pepper blooms from September through October and is a significant fall source of nectar for bees.</p>
October – December	<p>1- Varroa populations peaked in Aug/Sept. The economic threshold is 60+ mites/day on a sticky board or 17+ mites in an ether roll for a colony of average strength. Treat if you exceed these numbers. Options include: Apiguard, ApilifeVAR, Mite Away II</p> <p>2- Can treat colonies for Nosema disease using Fumigillin. Colonies may need as much as 4 gallons of medicated syrup to control <i>Nosema cerana</i>.</p> <p>3-Monitor for and control small hive beetles (options include Checkmite+, GuardStar, Hood traps and West Beetle traps)</p> <p>4- Feed colonies if light (colonies can starve!)</p> <p>5-Can treat for tracheal mites (mix vegetable oil and powdered sugar until doughy (not sticky to touch): place a pancake-sized patty on top bars of brood chamber.</p>	<p>Oct: Spanish Needle, Mexican Clover^N, Primrose Willow^N, Spotted Mint^N, Goldenrod^M, Vine Aster^N, Smart Weed^N, Bush AsterND</p> <p>^Ncontinues to bloom in November</p> <p>^Dcontinues to bloom in December</p> <p>Nov: Nothing new blooms</p> <p>Dec: Nothing new blooms</p>



Beekeepers of Volusia County, Florida

Meeting Agenda

June 27, 2012

Call to order and welcome:

Business:

- 2012 Membership Drive / Registrations / \$15.00 Renewals
- Treasurer's Report
- Approval of the May Minutes

Presentations Discussions:

- Introduction and opening remarks by Mike Hays—Vice President
- Open discussion

Beekeepers of Volusia County

Next Meeting

**Wednesday
June 27, 2012
6:30 PM**

**Volusia County Agricultural
Center Auditorium,
3100 E. New York Ave., Deland**

Check Out Our Website

www.beekeepersofvolusiacountyfl.com

Club Officers

President—Marlin Athearn—mjathearn@Volusia.k.12.fl.us— 386-428-0838

Vice President —Mike Hays——jhays8@cfl.rr.com———386-671-3011

Treasurer ———Ron Kull———kullrp@yahoo.com———386-451-2978

Secretary — —Donna Balo———balo_d@hotmail.com———386-738-1954

Local Beekeeping Suppliers who are members of the Club

1. **Debs Beekeeping Supplies** – Hastings Fl. & Jacksonville Fl.
1-904-886-9389 & 1-877-703-DEBS
2. **North American Bee Hive Co.** - Jacksonville, Fl.—1-904-378-5006
3. **Jester Bee Co.**— Mims, Fl. Nucs, Queens, Queen Cells—Kevin@Jesterbee.com
Please call us at : 870 243 1596 with your order.



“When someone shares something of value with you and you benefit from it, you have a moral obligation to share it with others.” ...

Chinese Proverb

BEEKEEPERS OF VOLUSIA COUNTY, FLORIDA

Minutes (not yet accepted)

Beekeepers of Volusia County Club Meeting Minutes of 05/22/12

Called to order by Marlin Athearn, president @ 6:35pm

41 in attendance

Attendees Introduced themselves & told a little about their beekeeping experience.

Prior minutes approved

Motion passed fiscal year will be the calendar year for collection of club dues.

Motion passed \$15 family / year dues will be due January 1. If dues are not paid by the end of February, they will be dropped off the member list & will no longer receive the newsletter.

Motion passed all members that join October - December will be considered paid through the following calendar year

Motion passed a member card will be printed and distributed to all paid members. The card will include the expiration date of the paid member.

Motion passed that a logo will be created to include: Established 2010, outline of Volusia County, bee, honeycomb cells

The Club Hive is queened & up & running. It will be housed about 3 miles from the Ag Center. It will be moved there in about a week.

June meeting will be a demo of extracting honey.

The July meeting will be A Day in the Bee Yard, it is planned for Saturday July 21 @ 8am.

All meetings are open to the public.

Treasury Report - \$2243.91

Tom Bartlett discussed the Tupalo Festival in Tallahassee on Lake Alice. Arts & crafts, dancing, music & Tupalo honey was featured. Tom bought some Tupalo honey for people to buy if they want it.

Tom Bartlett has a couple Grit Country Magazine Backyard Bess & Honey for \$8

Grit Magazine can be googled for access to the articles

Extra magazines, fliers & samples from Bee College were brought for club members

Presentation by Marlin Athearn of the wax byproduct of honey extraction, use of a solar melter, waxing the plastic cells, candle making was demonstrated.

Adjourned 7:53pm

Submitted by Donna Balo, secretary

A farmer was on his way home when his truck ran out of gas on a county road, he got out of his truck to start walking when a honey bee landed on his shoulder, need some help the honey bee asked? The farmer replied I have run out of gas, the honey bee replied, my friends and I can help. Soon after a swarm of bees came out of the woods and flew into his gas tank, after a few minutes they flew out and returned to the woods, the honey bee remarked try to start the truck now. The farmer got in the truck and found his gas tank was full of gas again, the farmer called out thanks, by the way what kind of gas is this? The honey bee replied—BP

Businesses of Members



Full Moon Natives

Specializing in
Native & Waterwise Plants
Eco Landscape Designs
Butterfly Gardens

Kevin & Marvette Bagwell
386.212.9923
www.FullMoonNatives.com
1737 Fern Park Drive
Port Orange, FL 32128
kevinb@FullMoonNatives.com

1 mile west of
I-95/Dunlawton
Look for the Sun Totem

Mon-Wed by appointment
Thur-Fri 10:00-5:00
Saturday 8:00-4:00

TERRY L. ELLIS, President

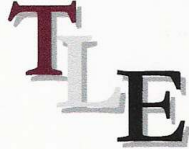
TLE CONSTRUCTION ENTERPRISES, INC.

GENERAL & ROOFING CONTRACTOR

COMMERCIAL RESIDENTIAL
LICENSED, INSURED & STATE CERTIFIED

Ormond Beach, Florida

Phone: 386 615 6575
Fax: 386 615 6501
Email: tleenterprises@cfl.rr.com
Website: www.TLEconstruction.com



VOLUSIA BUILDING INDUSTRY ASSOCIATION
Builder Member

Clifton Farms, Inc.
Growers of Southern Peas & Green Peanuts

Jody & Carmen Clifton
Owners/Operators

6575 State Road #11
DeLeon Springs, Florida
32130

386 985-5142
386 717-0521 (C)
CAClifton2@aol.com



Deb's Bee Supply



**Hive Bodies, Supers,
Frames, Foundation,
Smokers, Hive Tools and More!**

(904) 886-9389



**OLD SAWMILL
ELECTRIC, INC.**

Donald Walker

Over 23 Years Experience
Industrial, Commercial & Residential
Service & Repairs

Licensed & Insured Cell: 386-566-6126
ER13014236 Home: 386-738-8690

S&S Apiaries **BEE REMOVAL**

Single Story Hives & 5 Frame Nucs
Pure Honey & More
FOR SALE



Jesse Azam
(386) 478-9722 Cell • (386) 427-6543 Fax
116 Riverside Terrace • Edgewater, FL 32141


Alysian Apiaries
Helping the environment one bee at a
time!

Honey bee removal
Bee sales
Honey
Hive products

407/ 417-1896

Scott MacMahon
Peggy MacMahon
Ian MacMahon

scottmacmahon@yahoo.com



“The bee is more honored than other animals, not because he labors, but because she labors for others—Saint John Chrysostom

Beekeeping —Classifieds

Honey Extractor rental and Honey Extraction Services call—Tom Bartlett—386-756-2571

Volusia Country Brushy Mountain Beekeeping Supply Dealer Prices— Tom Bartlett—
386-756-2571

One Dadant small (children's) bee suit
One Dadant smoker (new) and Hive tool
Plastic queen excluders
Fume board
At least 3-4 sets of medium bee gloves.—
Marlin Athearn 386-428-0838

4 Frame Home made Extractor for sale \$100—Guy Johnson—
johnsonguysharon@bellsouth.net

Tupelo Honey from the 2012 Tupelo Honey Festival—Tom Bartlett—386-756-2571

1/8 wire for sale, 3 feet wide, \$2.50 per running foot—Don Druckert <ndruckert@cfl.rr.com>

Want to sell Beekeeping related goods or services? E-mail the Newsletter at
Beekeeper7501@aol.com

Beekeepers of Volusia County, Florida

Membership Registration Form—2012

Name _____

Address _____

City _____ State _____ Zip Code _____

Telephone Number _____

E-mail address: Important - Much business is done by electronic mail

1. Regular Membership (includes family members) \$15.00 []
2. Lifetime membership—\$250.00

Please make checks payable to Beekeepers of Volusia County, Florida

Bring to meeting or mail to:

**Ron Kull, Treasurer, 2525 Palm Dr.
Port Orange, FL 32128,
Phone: 1-386-451-2978
E-mail: Kullrp@yahoo.com**

Meeting Information...