

**Beekeepers  
of  
Volusia County  
Florida**

**Founded  
February 9, 2010**



**August 2012**

**President's  
Corner**

**P  
R  
O  
P  
I  
L  
I  
S**

From the Presidents hive stand:

The year is flying by and between the vacations and days in the bee yard it seems forever since I've been to a meeting AG building. I would like to thank Mike Hayes for running the June meeting and all of the members that helped him. I am still working on the logo with Steve Gunter and I think we are getting close, the logo is going to represent our club so we want to get it right.

Late summer is not a time to let down your guard. Your hives will start to decline slightly because of the lack of bloom this time of year, but the Varoa mites will be increasing in numbers as well as the SHBs. Strong hives are your best defense against SHBs and keeping your hives strong may require some measure of control to slow down the Varoa. If your hives start to loose numbers you may need to help the bees control their space by removing parts of the hive that have few or no bees.

I hope to see you at the meeting on the 22<sup>nd</sup>.

Best wishes

Marlin Athearn

President: Beekeepers of Volusia Co.

# Events of Interest to Beekeepers

**August 22, 2012—Beekeepers of Volusia County Meeting, 6:30 pm, at the Volusia County Ag Center**

**Check out the Full Moon Natives Web site for great weekend seminars on a host of “Go Green” topics. (Fullmoonnatives.com)**

**September 26, 2012—Beekeepers of Volusia County Meeting, 6:30pm at the Volusia County Ag Center**

**October 24, 2012—Beekeepers of Volusia County Meeting, 6:30pm at the Volusia County Ag Center**

**Volusia County Fair—November 01—11, 2012**



Hello Beekeepers of Volusia County

The Volusia County Fair is scheduled for November 01 through the 11th, 2012

For the past two years the Beekeepers of Volusia County has reserved a table in the Horticultural Building to showcase the Club activities, answer beekeeping questions and showcase the Welsh Honey Judging Contest.

The Club is in the process of forming a Volusia County Fair committee to plan and setup the club location at the fair.

Please plan to volunteer for this committee and sign up to man the table during the fair.

More Details will be provided during the upcoming meetings— also see or call Marlin Athern for information

## Need Help? Call A Mentor!

**Marlin Athern** : 386-428-0838  
mjathear@volusia.k12.fl.us—New Smyrna Beach

**Tom Bartlett:** beekeeper7501 @aol.com—  
386-756-2571—Port Orange

**Don Kent:**Dongonekent@gmail.com, 386-  
672-0995—Ormond Beach

**Mike Hays:** Jhays8@cfl.rr.com—386-671-  
Or0311—Ormond Beach

“The happiness of the bee and the dolphin is to exist For man it is to know that and to wonder at it. Jacques Yves Cousteau

# Florida Management Beekeeper Calendar – Central Florida

Used with permission of University of Florida Honey Bee Research and Extension Laboratory

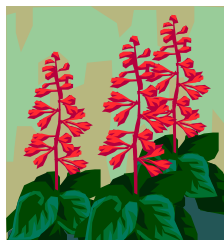
Month	Management Calendar	Blooming Plants
January	1- Feed colonies if light (colonies can starve!) 2- Nosema can be a significant colony problem this time of year. You can treat colonies for Nosema disease using Fumigillin. Colonies may need as much as 4 gallons of medicated syrup to control <i>Nosema ceranae</i> . 3- Repair/paint old equipment	Sand Pine <sup>F</sup> , Maple <sup>F</sup> , Willow <sup>FM</sup>  F <sup>F</sup> continues to bloom in February FM <sup>FM</sup> continues to bloom in February and March
February	1- Feed colonies if light (colonies can starve!) 2- Can treat colonies for Nosema disease using Fumigillin. 3- Can treat with Terramycin or Tylan for AFB.	Plum <sup>M</sup> , Cherry <sup>M</sup> , Oak <sup>M</sup> , Walther Viburnum <sup>M</sup> , Sweet Clover <sup>M</sup> , Blueberry <sup>M</sup> , Haw <sup>M</sup> , Fetterbush <sup>M</sup>  M <sup>M</sup> continues to bloom in March
March  Note: Citrus blooms in March. Make sure your colonies are ready. Talk with your growers about their pesticide habits.	1- Attend UF Bee College in Marineland!!! 2- Colony Populations begin to grow! Add supers and/or control swarming as necessary. 3- Can treat with Terramycin or Tylan <i>dust</i> for AFB/EFB. 4- Make nucs/splits.	Orange, Spanish Needle
April	1- Disease and queen problems should be remedied. 2- Make splits/nucs – new queens available 3- Control swarming 4- Add supers, the nectar flow began in late March	Orange, Sweet clover, Wild Blueberry, Haw, Fetterbush <sup>M</sup> , Spanish Needle <sup>MJ</sup> , Galberry <sup>M</sup> , Dog Hobble <sup>MJ</sup> , Palmetto <sup>MJ</sup> , Mexican Clover <sup>MJ</sup> , Butter Mint <sup>MJ</sup>  M <sup>M</sup> continues to bloom in May J <sup>J</sup> continues to bloom in June MJ <sup>MJ</sup> continues to bloom in May and June
May	1- Continue to inspect for colony maladies but don't treat for diseases while producing honey 2- Continue swarm control 3- Super as necessary	Palm <sup>J</sup> , Gopher Apple <sup>J</sup> , Joint Weed <sup>J</sup> , Sandhill Prairie Clover <sup>J</sup> , Spiderwort/Dayflower <sup>J</sup>  J <sup>J</sup> continues to bloom in June



# Florida Management Beekeeper Calendar – Central Florida

Used with permission of University of Florida Honey Bee Research and Extension Laboratory

Month	Management Calendar	Blooming Plants
June	1- Super as necessary for late flowers 2- Varroa populations begin to grow – monitor colonies closely. The economic threshold is 60+ mites/day on a sticky screen or 17+ mites in an ether roll. Treat if you exceed these numbers.	Mangrove, Red Bay, Cabbage Palm
July	1- Remove and process honey – main flow stops 2- Varroa populations begin to grow – monitor colonies closely. The economic threshold is 60+ mite/day on a sticky screen or 17+ mites in an ether roll for a colony of average strength. Treat if you exceed these numbers. Option include: Apigard, ApilifeVAR, Mite Away II.	Spanish Needle <sup>AS</sup> , Palmetto, Mexican Clover <sup>AS</sup> , Buttermint, Palm, Gopher Apple, Joint Weed <sup>A</sup> , Redbay <sup>AS</sup> , Sandhill Prairie Clover <sup>A</sup> , Partridge Pea <sup>A</sup> , Mangrove <sup>A</sup> , Primrose Willow <sup>AS</sup> , Spiderwort/Dayflower <sup>AS</sup>  <sup>A</sup> continues to bloom in August <sup>AS</sup> continues to bloom in September
August	1- Monitor colonies for varroa (see July)! 2- Treat with Terramycin <i>dust</i> for AFB/EFB 3- Feed colonies if light 4-Monitor for and control small hive beetles 5- It's hot! Ensure adequate colony ventilation	Spotted Mint <sup>S</sup> , Goldenrod <sup>S</sup> , Vine Aster <sup>S</sup> , Sumac <sup>S</sup>  <sup>S</sup> continues to bloom in September
September	1- Monitor colonies for varroa (see July)! 2- Super colonies if strong B. Pepper flow 3- Consider treating colonies for Nosema disease using Fumidil-B. Colonies may need as much as 4 gallons of medicated syrup to control <i>Nosema cerana</i> . 5- If no nectar flow, feed colonies if light	Smart Weed, Brazilian Pepper, Bush Aster  Note: Brazilian Pepper blooms from September through October and is a significant fall source of nectar for bees.
October – December	1- Varroa populations peaked in Aug/Sept. The economic threshold is 60+ mites/day on a sticky board or 17+ mites in an ether roll for a <b>colony of average strength</b> . Treat if you exceed these numbers. Options include: Apiguard, ApilifeVAR, Mite Away II 2- Can treat colonies for Nosema disease using Fumigillin. Colonies may need as much as 4 gallons of medicated syrup to control <i>Nosema cerana</i> . 3-Monitor for and control small hive beetles (options include Checkmite+, GuardStar, Hood traps and West Beetle traps) 4- Feed colonies if light (colonies can starve!) 5-Can treat for tracheal mites (mix vegetable oil and powdered sugar until doughy (not sticky to touch): place a pancake-sized patty on top bars of brood chamber.	<b>Oct:</b> Spanish Needle, Mexican Clover <sup>N</sup> , Primrose Willow <sup>N</sup> , Spotted Mint <sup>N</sup> , Goldenrod <sup>M</sup> , Vine Aster <sup>N</sup> , Smart Weed <sup>N</sup> , Bush Aster <sup>ND</sup>  <sup>N</sup> continues to bloom in November <sup>D</sup> continues to bloom in December  <b>Nov:</b> Nothing new blooms  <b>Dec:</b> Nothing new blooms



**Beekeepers of Volusia County, Florida**

**Meeting Agenda**

August 22, 2012

Call to order and welcome:

Marlin Athearn—President

Business:

- 2012 Membership Drive \$15.00
- Treasurer's Report
- Approval of the June Minutes
- Welsh Honey Judging—Don Kent Part Two
- Volusia Country Fair
- Update on Club Hive
- Open discussion

# **Beekeepers of Volusia County**

## **Next Meeting**

**Wednesday  
August 22, 2012  
6:30 PM**

**Volusia County Agricultural  
Center Auditorium,  
3100 E. New York Ave., Deland**

**Check Out Our Website**

**[www.beekeepersofvolusiacountyfl.com](http://www.beekeepersofvolusiacountyfl.com)**

## **Club Officers**

**President**—Marlin Athearn—mjathearn@Volusia.k.12.fl.us— 386-428-0838

**Vice President** —Mike Hays——jhays8@cfl.rr.com———386-671-3011

**Treasurer** ——Ron Kull———kullrp@yahoo.com———386-451-2978

**Secretary** — —Donna Balo———balo\_d@hotmail.com———386-738-1954

## Local Beekeeping Suppliers who are members of the Club

1. **Debs Beekeeping Supplies** – Hastings Fl. & Jacksonville Fl.  
1-904-886-9389 & 1-877-703-DEBS
2. **North American Bee Hive Co.** - Jacksonville, Fl.—1-904-378-5006
3. **Jester Bee Co.**— Mims, Fl. Nucs, Queens, Queen Cells—Kevin@Jesterbee.com  
Please call us at : 870 243 1596 with your order.
4. **D & J Apiary**—17732 S. E. 283rd Ave., Umatilla, Florida—352-669-4233



**“When someone shares something of value with you and you benefit from it, you have a moral obligation to share it with others.” ...**

Chinese Proverb

**Beekeepers of Volusia County Club Meeting**  
**Minutes of 06/27/12**

Called to order by Mike Hayes, vice-president @ 6:36pm

36 in attendance

Prior minutes approved

Treasurers Report, not given

Dues now being accepted.

\$15 annual fee for individual & spouse,

Introduction of new attendees

Google Talk has a phone number available, discussion of the Club pursuing having a phone number

Hive inspection sheet passed around for members

3 honey judges in the club.

Basic rules of Welch Honey Judging will be in the next newsletter. Options of entries for judging were discussed. Judging rules from last year's judging is on the website.

Discussion of bee honey judging preliminary judging so members can learn 1st hand what the judging is all about. At the September club meeting bring in honey at 6pm that night If you want to participate in the black jar competition, bring your honey & a steward will pour the honey into the black jars

Membership Card voted & approved. Printing of the card will be looked in to.

Right to Farm in effect 07/01/12 FI Statute inspected annually. They are a great resource

Varroa Mite or Deformed Wing Disease - watch for & treat, new treatment can be placed on hive with honey super on the hive

Grit Magazine & Tupelo Honey available from Tom Bartlett.

Bring honey in August to be tested by refractor

Adjourned 8:30pm

Submitted by Donna Balo, secretary

**A farmer was on his way home when his truck ran out of gas on a county road, he got out of his truck to start walking when a honey bee landed on his shoulder, need some help the honey bee asked? The farmer replied I have run out of gas, the honey bee replied, my friends and I can help. Soon after a swarm of bees came out of the woods and flew into his gas tank, after a few minutes they flew out and returned to the woods, the honey bee remarked try to start the truck now. The farmer got in the truck and found his gas tank was full of gas again, the farmer called out thanks, by the way what kind of gas is this? The honey bee replied—BP**



# Businesses of Members



**Full Moon Natives**

Specializing in  
Native & Waterwise Plants  
Eco Landscape Designs  
Butterfly Gardens

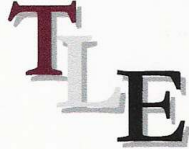
**Kevin & Marvette Bagwell**  
**386.212.9923**  
[www.FullMoonNatives.com](http://www.FullMoonNatives.com)  
1737 Fern Park Drive  
Port Orange, FL 32128  
kevinb@FullMoonNatives.com

1 mile west of  
I-95/Dunlawton  
**Look for the Sun Totem**

Mon-Wed by appointment  
Thur-Fri 10:00-5:00  
Saturday 8:00-4:00

TERRY L. ELLIS, President

**TLE CONSTRUCTION ENTERPRISES, INC.**  
**GENERAL & ROOFING CONTRACTOR**  
COMMERCIAL RESIDENTIAL  
LICENSED, INSURED & STATE CERTIFIED



Ormond Beach, Florida

Phone: 386 615 6575  
Fax: 386 615 6501  
Email: [tleenterprises@cfl.rr.com](mailto:tleenterprises@cfl.rr.com)  
Website: [www.TLEconstruction.com](http://www.TLEconstruction.com)

VOLUSIA BUILDING INDUSTRY ASSOCIATION  
Builder Member

*Clifton Farms, Inc.*  
Growers of Southern Peas & Green Peanuts



*Jody & Carmen Clifton*  
Owners/Operators

6575 State Road #11  
DeLeon Springs, Florida  
32130

386 985-5142  
386 717-0521 (C)  
[CAClifton2@aol.com](mailto:CAClifton2@aol.com)

**Deb's Bee Supply**



**Hive Bodies, Supers,  
Frames, Foundation,  
Smokers, Hive Tools and More!**  
**(904) 886-9389**



**OLD SAWMILL  
ELECTRIC, INC.**

Donald Walker

Over 23 Years Experience  
Industrial, Commercial & Residential  
Service & Repairs

Licensed & Insured Cell: 386-566-6126  
ER13014236 Home: 386-738-8690

**S&S** Apiaries **BEE REMOVAL**

Single Story Hives & 5 Frame Nucs  
Pure Honey & More  
FOR SALE



Jesse Azam  
(386) 478-9722 Cell • (386) 427-6543 Fax  
116 Riverside Terrace • Edgewater, FL 32141

*Alysian Apiaries*  
Helping the environment one bee at a  
time!



Honey bee removal  
Bee sales  
Honey  
Hive products  
407/ 417-1896

Scott MacMahon  
Peggy MacMahon  
Ian MacMahon [scottmacmahon@yahoo.com](mailto:scottmacmahon@yahoo.com)

**“The bee is more honored than other animals, not because he labors,  
but because she labors for others—Saint John Chrysostom**

# Beekeeping —Classifieds

Honey Extractor rental and Honey Extraction Services call—Tom Bartlett—386-756-2571

Volusia Country Brushy Mountain Beekeeping Supply Dealer Prices— Tom Bartlett—  
386-756-2571

4 Frame Home made Extractor for sale \$100—Guy Johnson—  
[johnsonguysharon@bellsouth.net](mailto:johnsonguysharon@bellsouth.net)

Tupelo Honey from the 2012 Tupelo Honey Festival—Tom Bartlett—386-756-2571

1/8 wire for sale, 3 feet wide, \$2.50 per running foot—Don Druckert <[ndruckert@cfl.rr.com](mailto:ndruckert@cfl.rr.com)>

Want to sell Beekeeping related goods or services? E-mail the Newsletter at  
[Beekeeper7501@aol.com](mailto:Beekeeper7501@aol.com)

# Beekeepers of Volusia County, Florida

## Membership Registration Form—2012

---

Name \_\_\_\_\_

---

Address \_\_\_\_\_

City \_\_\_\_\_ State \_\_\_\_\_ Zip Code \_\_\_\_\_

---

Telephone Number \_\_\_\_\_

---

**E-mail address: Important - Much business is done by electronic mail**

1. Regular Membership (includes family members) \$15.00 [ ]
2. Lifetime membership—\$250.00

**Please make checks payable to Beekeepers of Volusia County, Florida**

**Bring to meeting or mail to:**

**Ron Kull, Treasurer, 2525 Palm Dr.  
Port Orange, FL 32128,  
Phone: 1-386-451-2978  
E-mail: Kullrp@yahoo.com**

**Meeting Information...**