

**Beekeepers
of
Volusia County
Florida**

**Founded
February 9, 2010**



September 2012

**President's
Corner**

**P
R
O
P
I
L
I
S**

A Note From, The President's Hive Stand

The year is flying by and we are already talking about winter preparations. Some of us are lucky enough to be in the last honey flow of the year, that being Brazilian pepper, golden rod and Spanish needle, if you're not in an area with an abundance of these flowers find some. The rest of us need to start looking at how much honey our hives have to over winter with, by November the hives should have at least one medium box or between 30& 40 lbs of honey to get them over the winter hump without you having to feed them. It is also getting to be the last time you can treat (whatever that may be for you) for Varoa to get your girls through the winter in good shape. Swarms in November are uncommon but do happen in areas with lots of Brazilian Pepper and golden rod so be aware of a late build up in the brood box, you may have to do a fall split.

The Volusia Co. Fair is starting to ramp up and I have already been in some meetings. We have represented the club well in the past and it shows in the positive comments I get from the Fair supervisors and directors, they are looking forward to our presentation this year. It is always great to see new club members at the booth talking to "non Bee People" and in turn learning so much. The saying is true "the best way to learn is to teach".

I finally have the club hive, it is at my house so I can get it in shape or at least try to. It's not as strong as it could be and because of its' location is full of hive Beatles.

See you at the meeting
Marlin Athearn President

Events of Interest to Beekeepers

September 26, 2012—Beekeepers of Volusia County Meeting, 6:30pm at the Volusia County Ag Center

October 24, 2012—Beekeepers of Volusia County Meeting, 6:30pm at the Volusia County Ag Center

November 28, 2012—Beekeepers of Volusia County Meeting, 6:30pm at the Volusia County Ag Center.

Volusia County Fair—November 01—11, 2012, see web site for details (Volusiacountyfair.com)

Florida State Beekeepers, 92nd Annual Convention November 01—03 see web site for details (FloridaBeekeepers.org)

Check out the Full Moon Natives Web site for great weekend seminars on a host of “Go Green” topics. (Fullmoonnatives.com)



Hello Beekeepers of Volusia County

The Volusia County Fair is scheduled for November 01 through the 11th, 2012

For the past two years the Beekeepers of Volusia County has reserved a table in the Horticultural Building to showcase the Club activities, answer beekeeping questions and showcase the Welsh Honey Judging Contest.

The Club is in the process of forming a Volusia County Fair committee to plan and setup the club location at the fair.

Please plan to volunteer for this committee and sign up to man the table during the fair.

More Details will be provided during the upcoming meetings— also see or call Marlin Athearn for information

Need Help? Call A Mentor!

Marlin Athearn : 386-428-0838
mjathear@volusia.k12.fl.us—New Smyrna Beach

Tom Bartlett: [beekeeper7501 @aol.com](mailto:beekeeper7501@aol.com)—
386-756-2571—Port Orange

Don Kent: Dongonekent@gmail.com, 386-
672-0995—Ormond Beach

Mike Hays: Jhays8@cfl.rr.com—386-671-
Or0311—Ormond Beach

“The happiness of the bee and the dolphin is to exist For man it is to know that and to wonder at it. Jacques Yves Cousteau

Florida Management Beekeeper Calendar – Central Florida

Used with permission of University of Florida Honey Bee Research and Extension Laboratory

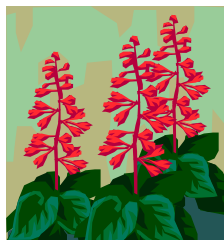
Month	Management Calendar	Blooming Plants
January	1- Feed colonies if light (colonies can starve!) 2- Nosema can be a significant colony problem this time of year. You can treat colonies for Nosema disease using Fumigillin. Colonies may need as much as 4 gallons of medicated syrup to control <i>Nosema ceranae</i> . 3- Repair/paint old equipment	Sand Pine ^F , Maple ^F , Willow ^{FM} F ^F continues to bloom in February FM ^{FM} continues to bloom in February and March
February	1- Feed colonies if light (colonies can starve!) 2- Can treat colonies for Nosema disease using Fumigillin. 3- Can treat with Terramycin or Tylan for AFB.	Plum ^M , Cherry ^M , Oak ^M , Walther Viburnum ^M , Sweet Clover ^M , Blueberry ^M , Haw ^M , Fetterbush ^M M ^M continues to bloom in March
March Note: Citrus blooms in March. Make sure your colonies are ready. Talk with your growers about their pesticide habits.	1- Attend UF Bee College in Marineland!!! 2- Colony Populations begin to grow! Add supers and/or control swarming as necessary. 3- Can treat with Terramycin or Tylan <i>dust</i> for AFB/EFB. 4- Make nucs/splits.	Orange, Spanish Needle
April	1- Disease and queen problems should be remedied. 2- Make splits/nucs – new queens available 3- Control swarming 4- Add supers, the nectar flow began in late March	Orange, Sweet clover, Wild Blueberry, Haw, Fetterbush ^M , Spanish Needle ^{MJ} , Galberry ^M , Dog Hobble ^{MJ} , Palmetto ^{MJ} , Mexican Clover ^{MJ} , Butter Mint ^{MJ} M ^M continues to bloom in May J ^J continues to bloom in June MJ ^{MJ} continues to bloom in May and June
May	1- Continue to inspect for colony maladies but don't treat for diseases while producing honey 2- Continue swarm control 3- Super as necessary	Palm ^J , Gopher Apple ^J , Joint Weed ^J , Sandhill Prairie Clover ^J , Spiderwort/Dayflower ^J J ^J continues to bloom in June



Florida Management Beekeeper Calendar – Central Florida

Used with permission of University of Florida Honey Bee Research and Extension Laboratory

Month	Management Calendar	Blooming Plants
June	1- Super as necessary for late flowers 2- Varroa populations begin to grow – monitor colonies closely. The economic threshold is 60+ mites/day on a sticky screen or 17+ mites in an ether roll. Treat if you exceed these numbers.	Mangrove, Red Bay, Cabbage Palm
July	1- Remove and process honey – main flow stops 2- Varroa populations begin to grow – monitor colonies closely. The economic threshold is 60+ mite/day on a sticky screen or 17+ mites in an ether roll for a colony of average strength. Treat if you exceed these numbers. Option include: Apigard, ApilifeVAR, Mite Away II.	Spanish Needle ^{AS} , Palmetto, Mexican Clover ^{AS} , Buttermint, Palm, Gopher Apple, Joint Weed ^A , Redbay ^{AS} , Sandhill Prairie Clover ^A , Partridge Pea ^A , Mangrove ^A , Primrose Willow ^{AS} , Spiderwort/Dayflower ^{AS} ^A continues to bloom in August ^{AS} continues to bloom in September
August	1- Monitor colonies for varroa (see July)! 2- Treat with Terramycin <i>dust</i> for AFB/EFB 3- Feed colonies if light 4-Monitor for and control small hive beetles 5- It's hot! Ensure adequate colony ventilation	Spotted Mint ^S , Goldenrod ^S , Vine Aster ^S , Sumac ^S ^S continues to bloom in September
September	1- Monitor colonies for varroa (see July)! 2- Super colonies if strong B. Pepper flow 3- Consider treating colonies for Nosema disease using Fumidil-B. Colonies may need as much as 4 gallons of medicated syrup to control <i>Nosema cerana</i> . 5- If no nectar flow, feed colonies if light	Smart Weed, Brazilian Pepper, Bush Aster Note: Brazilian Pepper blooms from September through October and is a significant fall source of nectar for bees.
October – December	1- Varroa populations peaked in Aug/Sept. The economic threshold is 60+ mites/day on a sticky board or 17+ mites in an ether roll for a colony of average strength . Treat if you exceed these numbers. Options include: Apiguard, ApilifeVAR, Mite Away II 2- Can treat colonies for Nosema disease using Fumigillin. Colonies may need as much as 4 gallons of medicated syrup to control <i>Nosema cerana</i> . 3-Monitor for and control small hive beetles (options include Checkmite+, GuardStar, Hood traps and West Beetle traps) 4- Feed colonies if light (colonies can starve!) 5-Can treat for tracheal mites (mix vegetable oil and powdered sugar until doughy (not sticky to touch): place a pancake-sized patty on top bars of brood chamber.	Oct: Spanish Needle, Mexican Clover ^N , Primrose Willow ^N , Spotted Mint ^N , Goldenrod ^M , Vine Aster ^N , Smart Weed ^N , Bush Aster ND ^N continues to bloom in November ^D continues to bloom in December Nov: Nothing new blooms Dec: Nothing new blooms



Beekeepers of Volusia County, Florida

Meeting Agenda

September 26, 2012

Call to order and welcome:

Marlin Athearn—President

Business:

- 2012 Membership Drive \$15.00
- Treasurer's Report
- Approval of the July Minutes
- Florida State 92nd Annual Beekeepers Convention
- Hive Removal Debate
- Volusia County Fair update with schedule sign-up
- **All Fair Entries must be preregistered by October 05, forms are available on the fair web page and we will have forms available at our meeting**
- Deland Wild Flower Festival
- Volusia County Ag Center requesting Jars of Local Honey for a United Way Fund Raising Auction.
- Open Forum

Beekeepers of Volusia County

Next Meeting

**Wednesday
September 26, 2012
6:30 PM**

**Volusia County Agricultural
Center Auditorium,
3100 E. New York Ave., Deland**

Check Out Our Website

www.beekeepersofvolusiacountyfl.com

Club Officers

President—Marlin Athearn—mjathearn@Volusia.k.12.fl.us— 386-428-0838

Vice President —Mike Hays——jhays8@cfl.rr.com———386-671-3011

Treasurer ———Ron Kull———kullrp@yahoo.com———386-451-2978

Secretary — —Donna Balo———balo_d@hotmail.com———386-738-1954

Local Beekeeping Suppliers who are members of the Club

1. **Debs Beekeeping Supplies** – Hastings Fl. & Jacksonville Fl.
1-904-886-9389 & 1-877-703-DEBS
2. **North American Bee Hive Co.** - Jacksonville, Fl.—1-904-378-5006
3. **Jester Bee Co.**— Mims, Fl. Nucs, Queens, Queen Cells—Kevin@Jesterbee.com
Please call us at : 870 243 1596 with your order.
4. **D & J Apiary**—17732 S. E. 283rd Ave., Umatilla, Florida—352-669-4233
5. **Bee Friendly**—814 Wildwood Circle, Port Orange—386-756-2571



“When someone shares something of value with you and you benefit from it, you have a moral obligation to share it with others.” ...

Chinese Proverb

Beekeepers of Volusia County Club Meeting
Minutes of 08/22/12

Called to order by Marlin Athearn, President @ 6:30

42 in attendance

Prior minutes approved

Treasurers Report, Ron Kull reported \$2,100

The Club Secretary was not present.

Dues now being accepted.

\$15 annual fee for individual & spouse,

Introduction of new attendees

Gary VanCleaf, Florida Apiary Inspection Supervisor attended the meeting and discussed Recent changes in the State Apiary Department

Don Kent, Welsh Honey Judge, conducted a review and demonstration of Welsh Honey Judging rules and procedures.

Marlin Athearn discussed the upcoming Volusia County Fair and requested funds from the club treasury to purchase Bee Keeping publications to hand out during the Fair. After a discussion regarding materials to hand out, a motion was made and a second to approve \$500.00 to purchase the Beekeeping information.

Adjourned 8:30pm

Submitted by Rita Bartlett

A farmer was on his way home when his truck ran out of gas on a county road, he got out of his truck to start walking when a honey bee landed on his shoulder, need some help the honey bee asked? The farmer replied I have run out of gas, the honey bee replied, my friends and I can help. Soon after a swarm of bees came out of the woods and flew into his gas tank, after a few minutes they flew out and returned to the woods, the honey bee remarked try to start the truck now. The farmer got in the truck and found his gas tank was full of gas again, the farmer called out thanks, by the way what kind of gas is this? The honey bee replied—BP

Businesses of Members



Full Moon Natives

Specializing in
Native & Waterwise Plants
Eco Landscape Designs
Butterfly Gardens

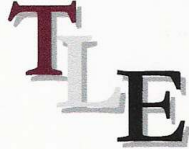
Kevin & Marvette Bagwell
386.212.9923
www.FullMoonNatives.com
1737 Fern Park Drive
Port Orange, FL 32128
kevinb@FullMoonNatives.com

1 mile west of
I-95/Dunlawton
Look for the Sun Totem

Mon-Wed by appointment
Thur-Fri 10:00-5:00
Saturday 8:00-4:00

TERRY L. ELLIS, President

TLE CONSTRUCTION ENTERPRISES, INC.
GENERAL & ROOFING CONTRACTOR
COMMERCIAL RESIDENTIAL
LICENSED, INSURED & STATE CERTIFIED



Ormond Beach, Florida

Phone: 386 615 6575
Fax: 386 615 6501
Email: tleenterprises@cfl.rr.com
Website: www.TLEconstruction.com

VOLUSIA BUILDING INDUSTRY ASSOCIATION
Builder Member

Clifton Farms, Inc.
Growers of Southern Peas & Green Peanuts



Jody & Carmen Clifton
Owners/Operators

6575 State Road #11
DeLeon Springs, Florida
32130

386 985-5142
386 717-0521 (C)
CAClifton2@aol.com

Deb's Bee Supply



**Hive Bodies, Supers,
Frames, Foundation,
Smokers, Hive Tools and More!**
(904) 886-9389



**OLD SAWMILL
ELECTRIC, INC.**

Donald Walker

Over 23 Years Experience
Industrial, Commercial & Residential
Service & Repairs

Licensed & Insured Cell: 386-566-6126
ER13014236 Home: 386-738-8690

S&S Apiaries **BEE REMOVAL**

Single Story Hives & 5 Frame Nucs
Pure Honey & More
FOR SALE



Jesse Azam
(386) 478-9722 Cell • (386) 427-6543 Fax
116 Riverside Terrace • Edgewater, FL 32141

Alysian Apiaries
Helping the environment one bee at a
time!



Honey bee removal
Bee sales
Honey
Hive products

Scott MacMahon 407/ 417-1896
Peggy MacMahon
Ian MacMahon scottmacmahon@yahoo.com

**“The bee is more honored than other animals, not because he labors,
but because she labors for others—Saint John Chrysostom**

Beekeeping —Classifieds

Honey Extractor rental and Honey Extraction Services call—Tom Bartlett—386-756-2571

Volusia Country Brushy Mountain Beekeeping Supply Dealer Prices— Tom Bartlett—
386-756-2571

4 Frame Home made Extractor for sale \$100—Guy Johnson—
johnsonguysharon@bellsouth.net

Tupelo Honey from the 2012 Tupelo Honey Festival—Tom Bartlett—386-756-2571

1/8 wire for sale, 3 feet wide, \$2.50 per running foot—Don Druckert <ndruckert@cfl.rr.com>

Four Frame Stainless Steel hand crank extractor, \$250.00, contact Marline Sigler Cell—386-
689-6191, Home 386-424-1972, Samsula Florida

Want to sell Beekeeping related goods or services? E-mail the Newsletter at
Beekeeper7501@aol.com

Beekeepers of Volusia County, Florida

Membership Registration Form—2012

Name

Address

City _____ **State** ____ **Zip Code**

Telephone Number _____

E-mail address: Important - Much business is done by electronic mail

- 1. Regular Membership (includes family members) \$15.00 []**
- 2. Lifetime membership—\$250.00**

Please make checks payable to Beekeepers of Volusia County, Florida

Bring to meeting or mail to:

**Ron Kull, Treasurer, 2525 Palm Dr.
Port Orange, FL 32128,
Phone: 1-386-451-2978
E-mail: Kullrp@yahoo.com**

Meeting Information...