

**Beekeepers  
of  
Volusia County  
Florida**

**Founded  
February 9, 2010**

**October 2012**



**President's  
Corner**

**P  
R  
O  
P  
I  
L  
I  
S**

Note from the President's Hive stand

Winter is approaching here in Florida and the temps are starting to drop ( 84 is lower than 94 right?). The last honey flow is about over and the girls have the long run until March before anything of real value starts to bloom. It's time to take a close look at how much honey the hives have. If they are light you still have some time to feed them and build up the stores. I have reduced all of my hives down to one honey super to help the girls control space as the hives start to get a little smaller toward winter. I got busy or complacent and it cost me one of my big hives right after the last meeting, one weekend it looked ok so I did go in it and the next fermented honey was running out of the entrance. That's right, a hive that was one deep and four mediums tall with about 100lbs.of honey destroyed by our little friends the small hive beetle. I was able to save the queen, at the same time I was finishing a trap out so she came in handy.

The fair is closing in and I'm still trying to recruit some booth personnel, we have about 6 people pulling the fair for everyone any help would be welcome. I'm going to bring some fair pamphlets to the meeting so we can familiarize ourselves with them.

I may have one more day in the bee yard after Thanksgiving in case we have some new want-a bees from the fair. See ya Wed.

Marlin Athearn  
President, Beekeepers of Volusia Co.

# Events of Interest to Beekeepers

**October 24, 2012—Beekeepers of Volusia County Meeting, 6:30pm at the Volusia County Ag Center**

**November 28, 2012—Beekeepers of Volusia County Meeting, meeting cancelled, next meeting January 23, 2013**

**Volusia County Fair—November 01—11, 2012, see web site for details ([Volusiacountyfair.com](http://Volusiacountyfair.com))**

**Florida State Beekeepers, 92nd Annual Convention November 01—03 see web site for details ([FloridaBeekeepers.org](http://FloridaBeekeepers.org))**

**Check out the Full Moon Natives Web site for great weekend seminars on a host of “Go Green” topics. ([Fullmoonnatives.com](http://Fullmoonnatives.com))**

**December 26, 2012—Beekeepers of Volusia County Meeting, meeting cancelled. Next meeting January 23, 2013**

**January 23, 2013—Beekeepers of Volusia County Meeting, 6:30pm at the Volusia County Ag Center**



## Hello Beekeepers of Volusia County

The Volusia County Fair is scheduled for November 01 through the 11th, 2012

For the past two years the Beekeepers of Volusia County has reserved a table in the Horticultural Building to showcase the Club activities, answer beekeeping questions and showcase the Welsh Honey Judging Contest.

The Club is in the process of forming a Volusia County Fair committee to plan and setup the club location at the fair.

Please plan to volunteer for this committee and sign up to man the table during the fair.

More Details will be provided during the upcoming meetings— also see or call Marlin Athearn for information

## Need Help? Call A Mentor!

**Marlin Athearn** : 386-428-0838  
[mjathearn@volusia.k12.fl.us](mailto:mjathearn@volusia.k12.fl.us)—New Smyrna Beach

**Tom Bartlett**: [beekeeper7501 @aol.com](mailto:beekeeper7501@aol.com)—  
386-756-2571—Port Orange

**Don Kent**: [Dongonekent@gmail.com](mailto:Dongonekent@gmail.com), 386-  
672-0995—Ormond Beach

**Mike Hays**: [Jhays8@cfl.rr.com](mailto:Jhays8@cfl.rr.com)—386-671-  
Or0311—Ormond Beach

“The happiness of the bee and the dolphin is to exist For man it is to know that and to wonder at it. Jacques Yves Cousteau

# Florida Management Beekeeper Calendar – Central Florida

Used with permission of University of Florida Honey Bee Research and Extension Laboratory

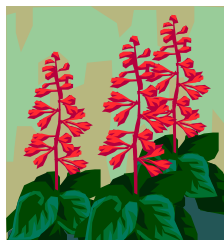
Month	Management Calendar	Blooming Plants
January	1- Feed colonies if light (colonies can starve!) 2- Nosema can be a significant colony problem this time of year. You can treat colonies for Nosema disease using Fumigillin. Colonies may need as much as 4 gallons of medicated syrup to control <i>Nosema ceranae</i> . 3- Repair/paint old equipment	Sand Pine <sup>F</sup> , Maple <sup>F</sup> , Willow <sup>FM</sup>  F <sup>F</sup> continues to bloom in February FM <sup>FM</sup> continues to bloom in February and March
February	1- Feed colonies if light (colonies can starve!) 2- Can treat colonies for Nosema disease using Fumigillin. 3- Can treat with Terramycin or Tylan for AFB.	Plum <sup>M</sup> , Cherry <sup>M</sup> , Oak <sup>M</sup> , Walther Viburnum <sup>M</sup> , Sweet Clover <sup>M</sup> , Blueberry <sup>M</sup> , Haw <sup>M</sup> , Fetterbush <sup>M</sup>  M <sup>M</sup> continues to bloom in March
March  Note: Citrus blooms in March. Make sure your colonies are ready. Talk with your growers about their pesticide habits.	1- Attend UF Bee College in Marineland!!! 2- Colony Populations begin to grow! Add supers and/or control swarming as necessary. 3- Can treat with Terramycin or Tylan <i>dust</i> for AFB/EFB. 4- Make nucs/splits.	Orange, Spanish Needle
April	1- Disease and queen problems should be remedied. 2- Make splits/nucs – new queens available 3- Control swarming 4- Add supers, the nectar flow began in late March	Orange, Sweet clover, Wild Blueberry, Haw, Fetterbush <sup>M</sup> , Spanish Needle <sup>MJ</sup> , Galberry <sup>M</sup> , Dog Hobble <sup>MJ</sup> , Palmetto <sup>MJ</sup> , Mexican Clover <sup>MJ</sup> , Butter Mint <sup>MJ</sup>  M <sup>M</sup> continues to bloom in May J <sup>J</sup> continues to bloom in June MJ <sup>MJ</sup> continues to bloom in May and June
May	1- Continue to inspect for colony maladies but don't treat for diseases while producing honey 2- Continue swarm control 3- Super as necessary	Palm <sup>J</sup> , Gopher Apple <sup>J</sup> , Joint Weed <sup>J</sup> , Sandhill Prairie Clover <sup>J</sup> , Spiderwort/Dayflower <sup>J</sup>  J <sup>J</sup> continues to bloom in June



# Florida Management Beekeeper Calendar – Central Florida

Used with permission of University of Florida Honey Bee Research and Extension Laboratory

Month	Management Calendar	Blooming Plants
June	<p>1- Super as necessary for late flowers</p> <p>2- Varroa populations begin to grow – monitor colonies closely. The economic threshold is 60+ mites/day on a sticky screen or 17+ mites in an ether roll. Treat if you exceed these numbers.</p>	Mangrove, Red Bay, Cabbage Palm
July	<p>1- Remove and process honey – main flow stops</p> <p>2- Varroa populations begin to grow – monitor colonies closely. The economic threshold is 60+ mite/day on a sticky screen or 17+ mites in an ether roll for a colony of average strength. Treat if you exceed these numbers. Option include: Apigard, ApilifeVAR, Mite Away II.</p>	<p>Spanish Needle<sup>AS</sup>, Palmetto, Mexican Clover<sup>AS</sup>, Buttermint, Palm, Gopher Apple, Joint Weed<sup>A</sup>, Redbay<sup>AS</sup>, Sandhill Prairie Clover<sup>A</sup>, Partridge Pea<sup>A</sup>, Mangrove<sup>A</sup>, Primrose Willow<sup>AS</sup>, Spiderwort/Dayflower<sup>AS</sup></p> <p><sup>A</sup>continues to bloom in August <sup>AS</sup>continues to bloom in September</p>
August	<p>1- Monitor colonies for varroa (see July)!</p> <p>2- Treat with Terramycin <i>dust</i> for AFB/EFB</p> <p>3- Feed colonies if light</p> <p>4-Monitor for and control small hive beetles</p> <p>5- It's hot! Ensure adequate colony ventilation</p>	<p>Spotted Mint<sup>S</sup>, Goldenrod<sup>S</sup>, Vine Aster<sup>S</sup>, Sumac<sup>S</sup></p> <p><sup>S</sup>continues to bloom in September</p>
September	<p>1- Monitor colonies for varroa (see July)!</p> <p>2- Super colonies if strong B. Pepper flow</p> <p>3- Consider treating colonies for Nosema disease using Fumidil-B. Colonies may need as much as 4 gallons of medicated syrup to control <i>Nosema cerana</i>.</p> <p>5- If no nectar flow, feed colonies if light</p>	<p>Smart Weed, Brazilian Pepper, Bush Aster</p> <p>Note: Brazilian Pepper blooms from September through October and is a significant fall source of nectar for bees.</p>
October – December	<p>1- Varroa populations peaked in Aug/Sept. The economic threshold is 60+ mites/day on a sticky board or 17+ mites in an ether roll for a <b>colony of average strength</b>. Treat if you exceed these numbers. Options include: Apiguard, ApilifeVAR, Mite Away II</p> <p>2- Can treat colonies for Nosema disease using Fumigillin. Colonies may need as much as 4 gallons of medicated syrup to control <i>Nosema cerana</i>.</p> <p>3-Monitor for and control small hive beetles (options include Checkmite+, GuardStar, Hood traps and West Beetle traps)</p> <p>4- Feed colonies if light (colonies can starve!)</p> <p>5-Can treat for tracheal mites (mix vegetable oil and powdered sugar until doughy (not sticky to touch): place a pancake-sized patty on top bars of brood chamber.</p>	<p><b>Oct:</b> Spanish Needle, Mexican Clover<sup>N</sup>, Primrose Willow<sup>N</sup>, Spotted Mint<sup>N</sup>, Goldenrod<sup>M</sup>, Vine Aster<sup>N</sup>, Smart Weed<sup>N</sup>, Bush Aster<sup>ND</sup></p> <p><sup>N</sup>continues to bloom in November</p> <p><sup>D</sup>continues to bloom in December</p> <p><b>Nov:</b> Nothing new blooms</p> <p><b>Dec:</b> Nothing new blooms</p>



# **Beekeepers of Volusia County, Florida**

## **Meeting Agenda**

October 24, 2012

Call to order and welcome:

Marlin Athearn—President

Business:

- 2012 Membership Drive \$15.00
- Treasurer's Report
- Approval of the September Minutes
- Old Business
- Cooking with Honey (member participation is welcome)
- Volusia County Fair update with schedule sign-up
- Fair coordination and last details
- Open Forum

# **Beekeepers of Volusia County**

## **Next Meeting**

**Wednesday  
October 24, 2012  
6:30 PM**

**Volusia County Agricultural  
Center Auditorium,  
3100 E. New York Ave., Deland**

**Check Out Our Website**

**[www.beekeepersofvolusiacountyfl.com](http://www.beekeepersofvolusiacountyfl.com)**

## **Club Officers**

**President**—Marlin Athearn—mjathearn@Volusia.k.12.fl.us— 386-428-0838

**Vice President** —Mike Hays——jhays8@cfl.rr.com———386-671-3011

**Treasurer** ———Ron Kull———kullrp@yahoo.com———386-451-2978

**Secretary** — —Donna Balo———balo\_d@hotmail.com———386-738-1954

## Local Beekeeping Suppliers who are members of the Club

1. **Debs Beekeeping Supplies** – Hastings Fl. & Jacksonville Fl.  
1-904-886-9389 & 1-877-703-DEBS
2. **North American Bee Hive Co.** - Jacksonville, Fl.—1-904-378-5006
3. **Jester Bee Co.**— Mims, Fl. Nucs, Queens, Queen Cells—Kevin@Jesterbee.com  
Please call us at : 870 243 1596 with your order.
4. **D & J Apiary**—17732 S. E. 283rd Ave., Umatilla, Florida—352-669-4233
5. **Bee Friendly**—814 Wildwood Circle, Port Orange—386-756-2571



**“When someone shares something of value with you and you benefit from it, you have a moral obligation to share it with others.” ...**

Chinese Proverb

**Beekeepers of Volusia County Club Meeting**  
**Minutes of 09/26/12**

Called to order by Marlin Athearn, president @ 6:31pm

45 in attendance

Membership dues c

Treasury Report - \$2318.91

Prior minutes July, 2012 approved.

Prior minutes August, 2012 approved.

Nov 1-3. FL State Beekeeper Association in Tampa.

This association advocates for beekeepers. All are encouraged to join. The association has been instrumental in important laws for example the FL right to farm law

New legislation has been proposed that bee removals are to be done by pest control companies only & that others may not charge for bee removal

First draft of the new statute will allow beekeepers to apply to the state to prove their qualification of bee removal

Nov 1-11 Volusia County Fair exhibition

"The Best Way to Learn About Bees is To Teach About Bees"

The Club is planning:

Observation Hive

Honey Tasting

Photos are requested, bring to Marlin at the October meeting

members are encouraged to sign up to assist at the booth, 4-9pm is the most active time at the booth

Preregistration for honey judging is required, sign up online, categories are listed on line. Due by Oct 5.

DeLand Wildlife Festival Mar 23, 2013 behind old Court House The club will have a booth. Sign up to work at the booth. Bee products can be sold there. 8am-3pm.

Marlin Athearn, will be giving a talk

United Way has requested products for a raffle which members have contributed.

Zombie Bee Syndrome primarily in CA. A fly lays eggs. The nervous system of the bees are effected & it is fatal to the bees. Staggering bees at the entrance of the hive is a symptom of infestation. To date members are not aware that this is in FL.

Marlin has the club bee hive now & will be overseeing it.

Used honey extractor for sale. See the newsletter if interested.

Motion to suspend club meetings for Nov & Dec & reconvene in January. Accepted.

Motion to have a website forum & to join Facebook page for the purpose of question & answers. Accepted.

Members are continuing to refine the club logo. It is not yet ready.

Question & answer period

This is the time to get control of the varroa mites & other viruses..

30-40#s of honey should get a hive through the winter. (1 medium box of 10 frames). Lift the hive, if not 20-25#, probably need to be fed with sugar water & pollen substitutes.

D&J Aviary seminar on splits & winter treatments. Bring hat & veils. 09/29/12 9a-3p. \$40

Adjourned 7:47pm

Submitted by Donna Balo, secretary



# Businesses of Members



**Full Moon Natives**

Specializing in  
Native & Waterwise Plants  
Eco Landscape Designs  
Butterfly Gardens

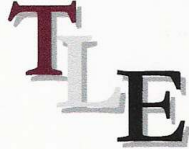
**Kevin & Marvette Bagwell**  
**386.212.9923**  
[www.FullMoonNatives.com](http://www.FullMoonNatives.com)  
1737 Fern Park Drive  
Port Orange, FL 32128  
kevinb@FullMoonNatives.com

1 mile west of  
I-95/Dunlawton  
**Look for the Sun Totem**

Mon-Wed by appointment  
Thur-Fri 10:00-5:00  
Saturday 8:00-4:00

TERRY L. ELLIS, President

**TLE CONSTRUCTION ENTERPRISES, INC.**  
**GENERAL & ROOFING CONTRACTOR**  
COMMERCIAL RESIDENTIAL  
LICENSED, INSURED & STATE CERTIFIED



Ormond Beach, Florida

Phone: 386 615 6575  
Fax: 386 615 6501  
Email: [tleenterprises@cfl.rr.com](mailto:tleenterprises@cfl.rr.com)  
Website: [www.TLEconstruction.com](http://www.TLEconstruction.com)

VOLUSIA BUILDING INDUSTRY ASSOCIATION  
Builder Member

*Clifton Farms, Inc.*  
Growers of Southern Peas & Green Peanuts



*Jody & Carmen Clifton*  
Owners/Operators

6575 State Road #11  
DeLeon Springs, Florida  
32130

386 985-5142  
386 717-0521 (C)  
[CAClifton2@aol.com](mailto:CAClifton2@aol.com)

**Deb's Bee Supply**



**Hive Bodies, Supers,  
Frames, Foundation,  
Smokers, Hive Tools and More!**  
**(904) 886-9389**



**OLD SAWMILL  
ELECTRIC, INC.**

Donald Walker

Over 23 Years Experience  
Industrial, Commercial & Residential  
Service & Repairs

Licensed & Insured Cell: 386-566-6126  
ER13014236 Home: 386-738-8690


**S&S** Apiaries **BEE REMOVAL**

Single Story Hives & 5 Frame Nucs  
Pure Honey & More  
FOR SALE



Jesse Azam  
(386) 478-9722 Cell • (386) 427-6543 Fax  
116 Riverside Terrace • Edgewater, FL 32141

*Alysian Apiaries*  
Helping the environment one bee at a  
time!



Honey bee removal  
Bee sales  
Honey  
Hive products

Scott MacMahon 407/ 417-1896  
Peggy MacMahon  
Ian MacMahon [scottmacmahon@yahoo.com](mailto:scottmacmahon@yahoo.com)

**“The bee is more honored than other animals, not because he labors, but because she labors for others—Saint John Chrysostom**

# Beekeeping —Classifieds

1/8 wire for sale, 3 feet wide, \$2.50 per running foot—Don Druckert <[ndruckert@cfl.rr.com](mailto:ndruckert@cfl.rr.com)>

Want to sell Beekeeping related goods or services? E-mail the Newsletter at [Beekeeper7501@aol.com](mailto:Beekeeper7501@aol.com)

# Beekeepers of Volusia County, Florida

## Membership Registration Form—2012

---

Name \_\_\_\_\_

---

Address \_\_\_\_\_

City \_\_\_\_\_ State \_\_\_\_\_ Zip Code \_\_\_\_\_

---

Telephone Number \_\_\_\_\_

---

**E-mail address: Important - Much business is done by electronic mail**

1. Regular Membership (includes family members) \$15.00 [ ]
2. Lifetime membership—\$250.00

**Please make checks payable to Beekeepers of Volusia County, Florida**

**Bring to meeting or mail to:**

**Ron Kull, Treasurer, 2525 Palm Dr.  
Port Orange, FL 32128,  
Phone: 1-386-451-2978  
E-mail: Kullrp@yahoo.com**

**Meeting Information...**