

# Beekeepers of Volusia County Florida

**Founded  
February 9, 2010**



**November 2011**

## President's Corner

**P  
R  
O  
P  
I  
L  
I  
S**

Hello Folks;

Fall is officially here, Fall in Florida is usually like a mild summer, many plants will still be blooming, not honey production is usually at a minimum. I always leave a medium super honey on the hives to help the ladies through the winter months. Many new beekeepers make the mistake of removing all the honey which often results in colony starvation during the winter months.

During the fall and winter months the queen may not lay very many eggs as during the summer months. Also you may notice that the hive is kicking out a majority of the dome population because they will not be needed during the winter months.

Because your hive population may be down, it may be a good idea to place an entrance reducer on the hive to help the guard bees protect the hive during the winter months.

Now is the time to begin thinking about getting ready for spring, ordering nucs and queens for spits or new hives, getting your swarm traps prepared, cleaning up and painting your wooden ware, cleaning up your queen excluders, building new equipment.

Don't forget to support our local bee equipment suppliers.

Bee Friendly,

**Tom Bartlett  
President, Beekeepers of Volusia Country, Florida  
University of Florida Master Beekeepers Program - Master Beekeeper  
Certified University of Florida Welsh Honey Judge**

The information that glues us together

# Events of Interest to Beekeepers

November 23, 2011 ... Beekeepers of Volusia  
County Meeting



## Cottage Food Legislation Signed into Law

In case you missed our e-mail, During the 2011 Legislative Session, the Florida Legislature enacted the House Bill 7209 allowing individuals to manufacture, sell and store certain types of “Cottage Food” products in an unlicensed home kitchen. This Bill includes Honey as a cottage food. Some details include:

Gross sales for a cottage food operation must not exceed \$15,000 annually.

Products must be sold directly by the cottage food operator to the consumer.

Sales by internet, mail order, consignment or at wholesale are prohibited

All Cottage food products must include the Name and Address of the food operator.

Must also be labeled in at least 10pt type in a color that provides a clear contrast to the background label: “Made in a cottage food operation that is not subject to Florida’s food safety regulations.

For more details, check the Florida Department of Agriculture and Consumer Services Web Site.

## Need Help? Call A Mentor!

**Tom Bartlett:** bartteb@aol.com—386-756-2571

**Marlin Athern :** 386-428-0838  
mjathear@volusia.k12.fl.us

**If you are an experienced beekeeper please volunteer to help your club mates.**

“Before beginning a Hunt, it is wise to ask someone what you are looking for before you begin looking for it.”... Winnie The Pooh

# Florida Management Beekeeper Calendar – Central Florida

Used with permission of University of Florida Honey Bee Research and Extension Laboratory

Month	Management Calendar	Blooming Plants
January	1- Feed colonies if light (colonies can starve!) 2- Nosema can be a significant colony problem this time of year. You can treat colonies for Nosema disease using Fumigillin. Colonies may need as much as 4 gallons of medicated syrup to control <i>Nosema ceranae</i> . 3- Repair/paint old equipment	Sand Pine <sup>F</sup> , Maple <sup>F</sup> , Willow <sup>FM</sup>  F <sup>F</sup> continues to bloom in February FM <sup>FM</sup> continues to bloom in February and March
February	1- Feed colonies if light (colonies can starve!) 2- Can treat colonies for Nosema disease using Fumigillin. 3- Can treat with Terramycin or Tylan for AFB.	Plum <sup>M</sup> , Cherry <sup>M</sup> , Oak <sup>M</sup> , Walther Viburnum <sup>M</sup> , Sweet Clover <sup>M</sup> , Blueberry <sup>M</sup> , Haw <sup>M</sup> , Fetterbush <sup>M</sup>  M <sup>M</sup> continues to bloom in March
March	1- Attend UF Bee College in Marineland!!! 2- Colony Populations begin to grow! Add supers and/or control swarming as necessary. 3- Can treat with Terramycin or Tylan <i>dust</i> for AFB/EFB. 4- Make nucs/splits.	Orange, Spanish Needle
April	1- Disease and queen problems should be remedied. 2- Make splits/nucs – new queens available 3- Control swarming 4- Add supers, the nectar flow began in late March	Orange, Sweet clover, Wild Blueberry, Haw, Fetterbush <sup>M</sup> , Spanish Needle <sup>MJ</sup> , Galberry <sup>M</sup> , Dog Hobble <sup>MJ</sup> , Palmetto <sup>MJ</sup> , Mexican Clover <sup>MJ</sup> , Butter Mint <sup>MJ</sup>  M <sup>M</sup> continues to bloom in May J <sup>J</sup> continues to bloom in June MJ <sup>MJ</sup> continues to bloom in May and June
May	1- Continue to inspect for colony maladies but don't treat for diseases while producing honey 2- Continue swarm control 3- Super as necessary	Palm <sup>J</sup> , Gopher Apple <sup>J</sup> , Joint Weed <sup>J</sup> , Sandhill Prairie Clover <sup>J</sup> , Spiderwort/Dayflower <sup>J</sup>  J <sup>J</sup> continues to bloom in June

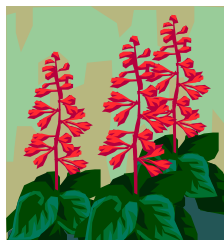
Note: Citrus blooms in March. Make sure your colonies are ready. Talk with your growers about their pesticide habits.



# Florida Management Beekeeper Calendar – Central Florida

Used with permission of University of Florida Honey Bee Research and Extension Laboratory

Month	Management Calendar	Blooming Plants
June	<p>1- Super as necessary for late flowers</p> <p>2- Varroa populations begin to grow – monitor colonies closely. The economic threshold is 60+ mites/day on a sticky screen or 17+ mites in an ether roll. Treat if you exceed these numbers.</p>	Mangrove, Red Bay, Cabbage Palm
July	<p>1- Remove and process honey – main flow stops</p> <p>2- Varroa populations begin to grow – monitor colonies closely. The economic threshold is 60+ mite/day on a sticky screen or 17+ mites in an ether roll for a colony of average strength. Treat if you exceed these numbers. Option include: Apigard, ApilifeVAR, Mite Away II.</p>	<p>Spanish Needle<sup>AS</sup>, Palmetto, Mexican Clover<sup>AS</sup>, Buttermint, Palm, Gopher Apple, Joint Weed<sup>A</sup>, Redbay<sup>AS</sup>, Sandhill Prairie Clover<sup>A</sup>, Partridge Pea<sup>A</sup>, Mangrove<sup>A</sup>, Primrose Willow<sup>AS</sup>, Spiderwort/Dayflower<sup>AS</sup></p> <p><sup>A</sup>continues to bloom in August <sup>AS</sup>continues to bloom in September</p>
August	<p>1- Monitor colonies for varroa (see July)!</p> <p>2- Treat with Terramycin <i>dust</i> for AFB/EFB</p> <p>3- Feed colonies if light</p> <p>4-Monitor for and control small hive beetles</p> <p>5- It's hot! Ensure adequate colony ventilation</p>	<p>Spotted Mint<sup>S</sup>, Goldenrod<sup>S</sup>, Vine Aster<sup>S</sup>, Sumac<sup>S</sup></p> <p><sup>S</sup>continues to bloom in September</p>
September	<p>1- Monitor colonies for varroa (see July)!</p> <p>2- Super colonies if strong B. Pepper flow</p> <p>3- Consider treating colonies for Nosema disease using Fumidil-B. Colonies may need as much as 4 gallons of medicated syrup to control <i>Nosema cerana</i>.</p> <p>5- If no nectar flow, feed colonies if light</p>	<p>Smart Weed, Brazilian Pepper, Bush Aster</p> <p>Note: Brazilian Pepper blooms from September through October and is a significant fall source of nectar for bees.</p>
October – December	<p>1- Varroa populations peaked in Aug/Sept. The economic threshold is 60+ mites/day on a sticky board or 17+ mites in an ether roll for a <b>colony of average strength</b>. Treat if you exceed these numbers. Options include: Apiguard, ApilifeVAR, Mite Away II</p> <p>2- Can treat colonies for Nosema disease using Fumigillin. Colonies may need as much as 4 gallons of medicated syrup to control <i>Nosema cerana</i>.</p> <p>3-Monitor for and control small hive beetles (options include Checkmite+, GuardStar, Hood traps and West Beetle traps)</p> <p>4- Feed colonies if light (colonies can starve!)</p> <p>5-Can treat for tracheal mites (mix vegetable oil and powdered sugar until doughy (not sticky to touch): place a pancake-sized patty on top bars of brood chamber.</p>	<p><b>Oct:</b> Spanish Needle, Mexican Clover<sup>N</sup>, Primrose Willow<sup>N</sup>, Spotted Mint<sup>N</sup>, Goldenrod<sup>M</sup>, Vine Aster<sup>N</sup>, Smart Weed<sup>N</sup>, Bush Aster<sup>ND</sup></p> <p><sup>N</sup>continues to bloom in November</p> <p><sup>D</sup>continues to bloom in December</p> <p><b>Nov:</b> Nothing new blooms</p> <p><b>Dec:</b> Nothing new blooms</p>



# Beekeepers of Volusia County, Florida

## Meeting Agenda

September 28, 2011

Call to order and welcome:

Business:

- Membership Drive / Registrations / \$15.00 Renewals
- Treasurer's Report
- Review and Acceptance of August Minutes

Presentations Discussions:

- Volusia County Fair
- The Importance of Hive Inspections
- New Cottage Food Law
- Raising Queen using the Miller Method (no grafting!)

Odds and Ends

1. What's blooming? See your Newsletter
2. What's happening in your bee yard?
3. Beekeeping Questions
4. Raffle

Adjournment

# **Beekeepers of Volusia County**

## **Next Meeting**

**Wednesday  
November 23, 2011  
6:30 PM**

**Volusia County Agricultural  
Center Auditorium,  
3100 E. New York Ave., Deland**

**Check Out Our Website**

**[www.beekeepersofvolusiacountyfl.com](http://www.beekeepersofvolusiacountyfl.com)**

## **Club Officers**

**President**—Tom Bartlett—bartteb@aol.com—386-756-2571

**Vice President**—Marlin Athearn—mjathearn@Volusia.k.12.fl.us

**Treasurer**—Ron Kull—kullrp@yahoo.com—386-451-2978

**Secretary**—Donna Balo

## Local Beekeeping Suppliers who are members of the Club

1. **Debs Beekeeping Supplies** – Hastings Fl. & Jacksonville Fl.  
1-904-886-9389 & 1-877-703-DEBS
2. **North American Bee Hive Co.** - Jacksonville, Fl.—1-904-378-5006



**“When someone shares something of value with you and you benefit from it, you have a moral obligation to share it with others.” ...**

Chinese Proverb

# BEEKEEPERS OF VOLUSIA COUNTY, FLORIDA

## Minutes (not yet accepted)

.Beekeepers of Volusia County, Florida  
10/26/11 Minutes

6:30pm Meeting opened by Tom Bartlett. President.

Total in attendance 42 people

The Club Treasurer and Secretary were not present during the meeting

The Treasurer's report was provided the Club President, balance \$1,812.82

Prior to the presentation a discussion regarding making D & J Apiaries honorary club members Information and discussion was provided by numerous members supporting and not supporting the concept. After the discussion was completed, the President, called for a motion to make D & J Apiaries an honorary club member, a motion and second was received, the club members present voted over-whelmingly **against** the motion to make D & J Apiaries honorary club members

Topics discussed:

- Volusia County Fair
- Honey Show information
- The Miller Method of raising Queens
- Constant Contact
- Cottage Food Law

Upon the completion of the Constant Contact presentation, The President asked for a motion to make Constant Contact the club's e-mail program and to disburse \$215 from the club treasury to prepay for one year's e-mail service at a 15% discount, a motion and second was received, the members present voted over-whelmingly in favor of the motion.

Copies of the Miller Method of raising Queens and the Cottage Food Law were provided to members present during the meeting.

The meeting was adjourned at 8:15pm

**I am not bound to win, but I am bound to be true. I am not bound to succeed, but I am bound to live by the light that I have. I must stand with anybody that stands right, and stand with him while he is right, and part with him when he goes wrong.**

**Abraham Lincoln**



# Businesses of Members

**Full Moon Natives**



Specializing in  
Native & Waterwise Plants  
Eco Landscape Designs  
Butterfly Gardens

**Kevin & Marvette Bagwell**  
**386.212.9923**  
[www.FullMoonNatives.com](http://www.FullMoonNatives.com)  
1737 Fern Park Drive  
Port Orange, FL 32128  
kevinb@FullMoonNatives.com

1 mile west of  
I-95/Dunlawton  
**Look for the Sun Totem**

Mon-Wed by appointment  
Thur-Fri 10:00-5:00  
Saturday 8:00-4:00

TERRY L. ELLIS, President

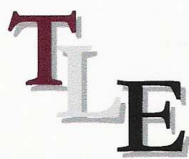
**TLE CONSTRUCTION ENTERPRISES, INC.**

**GENERAL & ROOFING CONTRACTOR**

COMMERCIAL RESIDENTIAL  
LICENSED, INSURED & STATE CERTIFIED

Ormond Beach, Florida

Phone: 386 615 6575  
Fax: 386 615 6501  
Email: [tleenterprises@cfl.rr.com](mailto:tleenterprises@cfl.rr.com)  
Website: [www.TLEconstruction.com](http://www.TLEconstruction.com)



VOLUSIA BUILDING INDUSTRY ASSOCIATION  
Builder Member

*Clifton Farms, Inc.*  
Growers of Southern Peas & Green Peanuts

*Jody & Carmen Clifton*  
Owners/Operators

6575 State Road #11  
DeLeon Springs, Florida  
32130

386 985-5142  
386 717-0521 (C)  
[CAClifton2@aol.com](mailto:CAClifton2@aol.com)



**Deb's Bee Supply**



**Hive Bodies, Supers,  
Frames, Foundation,  
Smokers, Hive Tools and More!**

**(904) 886-9389**



**OLD SAWMILL  
ELECTRIC, INC.**

Donald Walker

Over 23 Years Experience  
Industrial, Commercial & Residential  
Service & Repairs

Licensed & Insured Cell: 386-566-6126  
ER13014236 Home: 386-738-8690

**S&S** Apiaries **BEE REMOVAL**

Single Story Hives & 5 Frame Nucs  
Pure Honey & More  
FOR SALE



Jesse Azam  
(386) 478-9722 Cell • (386) 427-6543 Fax  
116 Riverside Terrace • Edgewater, FL 32141

*Alysian Apiaries*  
Helping the environment one bee at a  
time!

Honey bee removal  
Bee sales  
Honey  
Hive products

407/ 417-1896

Scott MacMahon  
Peggy MacMahon  
Ian MacMahon

[scottmacmahon@yahoo.com](mailto:scottmacmahon@yahoo.com)



**“Do not dwell in the past, do not dream of the future, concentrate the mind on the present moment.” ... Buddha**

# Beekeepers of Volusia County, Florida

## Membership Registration Form

---

**Name**

---

**Address**

**City** \_\_\_\_\_ **State** \_\_\_\_ **Zip Code**

---

**Telephone Number** \_\_\_\_\_

---

**E-mail address: Important - Much business is done by electronic mail**

- 1. Regular Membership (includes family members) \$15.00 [ ]**
- 2. Lifetime Membership donation of one hive with 10 frames and bees or \$250 { }**

**Please make checks payable to Beekeepers of Volusia County, Florida**

**Bring to meeting or mail to:**

**Ron Kull, Treasurer, 2525 Palm Dr.  
Port Orange, FL 32128,  
Phone: 1-386-451-2978  
E-mail: Kullrp@yahoo.com**

**Meeting Information...**