

**Beekeepers  
of  
Volusia County  
Florida**

**Founded  
February 9, 2010**



**January 2013**

**President's  
Corner**

**P  
R  
O  
P  
I  
L  
I  
S**

**From the President's Hive Stand**

I hope this letter finds you in great health and spirits as we dive into a new year in Beekeeping. The Volusia Co. fair was a big success as we had hundreds of non Beekeepers stop by to learn and ask questions, ¾ (about 350) of our new pamphlets went out and as usual the Fair Committee was very pleased with our booth and volunteers. The Volunteer count this year was 16 which is more than then we have had before. A special thanks goes out to Woody Grover for buying a Nuc from S&S apiaries (Jesse) and bring it to the Fair for I think 4 evenings with Don Ruckert. I brought one as well for 4 evenings and they were big hits, people would walk in the door see the hive and make a bee line right for it. Tom Bartlett also brought his observation hive for several nights. Don Kent and his wife put in their time (4 hours just judging) with Honey competition and registration. Don's team did an outstanding job.

Winter, if that is what we can call this, has been a little rough for my bees. I tried the only the strong survive approach with mixed results, I lost 6 hives, but that's better than others that have had close encounters of the BEAR kind, sometimes our best engineered plans are no match for the forces of nature.

Looking down the road we are going to have a busy spring, if beekeeping in the spring isn't busy enough, we have election for club officers coming up, a day in the bee yard in Feb, UF Bee College in March and Dr. Jamie Ellis will be at our meeting in April. So we're hitting the ground running.

I truly hope to see you at the meeting on Wed. the 23. I have a feeling it may be well attended so you may want to bee a little early, remember we officially start at 1830 (6:30pm).

Best Wishes  
Marlin Athearn  
President: Beekeepers of Volusia Co. Fl.

# Events of Interest to Beekeepers

**January 23, 2013—Beekeepers of Volusia County Meeting, 6:30pm at the Volusia County Ag Center**

**February 27, 2013—Beekeepers of Volusia County Meeting—A day in the Bee Yard, Cracker Creek— Day and Time to be announced**

**March 7, 2013—UF Master Beekeeper Exams, Marineland, Florida**

**March 8 & 9, 2013 UF Bee College, Marineland, Florida**

**March 27, 2013 Beekeepers of Volusia County Meeting, 6:30pm at the Volusia County Ag Center**



## Hello Beekeepers of Volusia County

So far our winter has been very mild, similar to last year. The Winter months are the time of the year in Florida when things slow down, not a lot blooming, Queens slow down laying eggs, honey production is very minimal. The Winter months are a great time to clean and repair your equipment for spring. Cold days are great for cleaning the propolis from Queen excluders.

If you need equipment for the up coming year or queens you should be ordering them now. Once the Spring Season starts many suppliers may be out of supplies.

Many times colonies swarm early in the Spring, so now is the time to think about getting your swarm trap supplies ready and general colony management (doing splits planning to add space and requeening)

Continue to inspect your hives on warm days once month, queen less may be combined with strong colonies and hives with minimal honey stores should be fed with at least a 50/50 sugar solution and a little Bee Healthy, Bee Essential or Mega Bee would good. See you in the Bee Yard !

## Need Help? Call A Mentor!

**Marlin Athearn** : 386-428-0838  
mjathear@volusia.k12.fl.us—New Smyrna Beach

**Tom Bartlett**: beekeeper7501 @aol.com—  
386-756-2571—Port Orange

**Don Kent**:Dongonekent@gmail.com, 386-  
672-0995—Ormond Beach

**Mike Hays**: Jhays8@cfl.rr.com—386-671-  
Or0311—Ormond Beach

“The happiness of the bee and the dolphin is to exist For man it is to know that and to wonder at it. Jacques Yves Cousteau

# Florida Management Beekeeper Calendar – Central Florida

Used with permission of University of Florida Honey Bee Research and Extension Laboratory

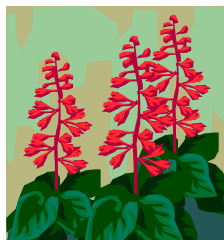
Month	Management Calendar	Blooming Plants
January	1- Feed colonies if light (colonies can starve!) 2- Nosema can be a significant colony problem this time of year. You can treat colonies for Nosema disease using Fumigillin. Colonies may need as much as 4 gallons of medicated syrup to control <i>Nosema ceranae</i> . 3- Repair/paint old equipment	Sand Pine <sup>F</sup> , Maple <sup>F</sup> , Willow <sup>FM</sup>  F <sup>F</sup> continues to bloom in February FM <sup>FM</sup> continues to bloom in February and March
February	1- Feed colonies if light (colonies can starve!) 2- Can treat colonies for Nosema disease using Fumigillin. 3- Can treat with Terramycin or Tylan for AFB.	Plum <sup>M</sup> , Cherry <sup>M</sup> , Oak <sup>M</sup> , Walther Viburnum <sup>M</sup> , Sweet Clover <sup>M</sup> , Blueberry <sup>M</sup> , Haw <sup>M</sup> , Fetterbush <sup>M</sup>  M <sup>M</sup> continues to bloom in March
March  Note: Citrus blooms in March. Make sure your colonies are ready. Talk with your growers about their pesticide habits.	1- Attend UF Bee College in Marineland March 8 & 9!!! 2- Colony Populations begin to grow! Add supers and/or control swarming as necessary. 3- Can treat with Terramycin or Tylan <i>dust</i> for AFB/EFB. 4- Make nucs/splits.	Orange, Spanish Needle
April	1- Disease and queen problems should be remedied. 2- Make splits/nucs – new queens available 3- Control swarming 4- Add supers, the nectar flow began in late March	Orange, Sweet clover, Wild Blueberry, Haw, Fetterbush <sup>M</sup> , Spanish Needle <sup>MJ</sup> , Galberry <sup>M</sup> , Dog Hobble <sup>MJ</sup> , Palmetto <sup>MJ</sup> , Mexican Clover <sup>MJ</sup> , Butter Mint <sup>MJ</sup>  M <sup>M</sup> continues to bloom in May J <sup>J</sup> continues to bloom in June MJ <sup>MJ</sup> continues to bloom in May and June
May	1- Continue to inspect for colony maladies but don't treat for diseases while producing honey 2- Continue swarm control 3- Super as necessary	Palm <sup>J</sup> , Gopher Apple <sup>J</sup> , Joint Weed <sup>J</sup> , Sandhill Prairie Clover <sup>J</sup> , Spiderwort/Dayflower <sup>J</sup>  J <sup>J</sup> continues to bloom in June



# Florida Management Beekeeper Calendar – Central Florida

Used with permission of University of Florida Honey Bee Research and Extension Laboratory

Month	Management Calendar	Blooming Plants
June	<p>1- Super as necessary for late flowers</p> <p>2- Varroa populations begin to grow – monitor colonies closely. The economic threshold is 60+ mites/day on a sticky screen or 17+ mites in an ether roll. Treat if you exceed these numbers.</p>	Mangrove, Red Bay, Cabbage Palm
July	<p>1- Remove and process honey – main flow stops</p> <p>2- Varroa populations begin to grow – monitor colonies closely. The economic threshold is 60+ mite/day on a sticky screen or 17+ mites in an ether roll for a colony of average strength. Treat if you exceed these numbers. Option include: Apigard, ApilifeVAR, Mite Away II.</p>	<p>Spanish Needle<sup>AS</sup>, Palmetto, Mexican Clover<sup>AS</sup>, Buttermint, Palm, Gopher Apple, Joint Weed<sup>A</sup>, Redbay<sup>AS</sup>, Sandhill Prairie Clover<sup>A</sup>, Partridge Pea<sup>A</sup>, Mangrove<sup>A</sup>, Primrose Willow<sup>AS</sup>, Spiderwort/Dayflower<sup>AS</sup></p> <p><sup>A</sup>continues to bloom in August <sup>AS</sup>continues to bloom in September</p>
August	<p>1- Monitor colonies for varroa (see July)!</p> <p>2- Treat with Terramycin <i>dust</i> for AFB/EFB</p> <p>3- Feed colonies if light</p> <p>4-Monitor for and control small hive beetles</p> <p>5- It's hot! Ensure adequate colony ventilation</p>	<p>Spotted Mint<sup>S</sup>, Goldenrod<sup>S</sup>, Vine Aster<sup>S</sup>, Sumac<sup>S</sup></p> <p><sup>S</sup>continues to bloom in September</p>
September	<p>1- Monitor colonies for varroa (see July)!</p> <p>2- Super colonies if strong B. Pepper flow</p> <p>3- Consider treating colonies for Nosema disease using Fumidil-B. Colonies may need as much as 4 gallons of medicated syrup to control <i>Nosema cerana</i>.</p> <p>5- If no nectar flow, feed colonies if light</p>	<p>Smart Weed, Brazilian Pepper, Bush Aster</p> <p>Note: Brazilian Pepper blooms from September through October and is a significant fall source of nectar for bees.</p>
October – December	<p>1- Varroa populations peaked in Aug/Sept. The economic threshold is 60+ mites/day on a sticky board or 17+ mites in an ether roll for a <b>colony of average strength</b>. Treat if you exceed these numbers. Options include: Apiguard, ApilifeVAR, Mite Away II</p> <p>2- Can treat colonies for Nosema disease using Fumigillin. Colonies may need as much as 4 gallons of medicated syrup to control <i>Nosema cerana</i>.</p> <p>3-Monitor for and control small hive beetles (options include Checkmite+, GuardStar, Hood traps and West Beetle traps)</p> <p>4- Feed colonies if light (colonies can starve!)</p> <p>5-Can treat for tracheal mites (mix vegetable oil and powdered sugar until doughy (not sticky to touch): place a pancake-sized patty on top bars of brood chamber.</p>	<p><b>Oct:</b> Spanish Needle, Mexican Clover<sup>N</sup>, Primrose Willow<sup>N</sup>, Spotted Mint<sup>N</sup>, Goldenrod<sup>M</sup>, Vine Aster<sup>N</sup>, Smart Weed<sup>N</sup>, Bush Aster<sup>ND</sup></p> <p><sup>N</sup>continues to bloom in November</p> <p><sup>D</sup>continues to bloom in December</p> <p><b>Nov:</b> Nothing new blooms</p> <p><b>Dec:</b> Nothing new blooms</p>



# Beekeepers of Volusia County, Florida

## Meeting Agenda

January 23, 2013

Call to order and welcome:

Marlin Athearn—President

Business:

- Welcome
- Approve old minute
- Treasurers report
- Start 2013 dues drive
- Fair Overview
- What to do with the club hive?
- Position of new member contact/welcome person
- Deland Wild Flower Festival Booth
- Club web site updating (who/how?)
- Raffle of a variety of BeeKeeping books (70s and 80s vintage)
-

# **Beekeepers of Volusia County**

## **Next Meeting**

**Wednesday  
January 23, 2013  
6:30 PM**

**Volusia County Agricultural  
Center Auditorium,  
3100 E. New York Ave., Deland**

**Check Out Our Website**

**[www.beekeepersofvolusiacountyfl.com](http://www.beekeepersofvolusiacountyfl.com)**

## **Club Officers**

**President**—Marlin Athearn—mjathearn@Volusia.k.12.fl.us— 386-428-0838

**Vice President** —Mike Hays——jhays8@cfl.rr.com———386-671-3011

**Treasurer** ———Ron Kull———kullrp@yahoo.com———386-451-2978

**Secretary** — —Donna Balo———balo\_d@hotmail.com———386-738-1954

## Local Beekeeping Suppliers who are members of the Club

1. **Debs Beekeeping Supplies** – Hastings Fl. & Jacksonville Fl.  
1-904-886-9389 & 1-877-703-DEBS
2. **North American Bee Hive Co.** - Jacksonville, Fl.—1-904-378-5006
3. **Jester Bee Co.**— Mims, Fl. Nucs, Queens, Queen Cells—Kevin@Jesterbee.com  
Please call us at : 870 243 1596 with your order.
4. **D & J Apiary**—17732 S. E. 283rd Ave., Umatilla, Florida—352-669-4233



**“When someone shares something of value with you and you benefit from it, you have a moral obligation to share it with others.” ...**

Chinese Proverb

**Beekeepers of Volusia County Club Meeting**  
**Minutes of 10/24/12**

Called to order by Marlin Athearn, president @ 6:34 pm

34 in attendance

Treasury Report - not given

Minutes of 09/29/12 approved.

Pamphlets have been designed with a preliminary logo.  
Motion made & approved to print the pamphlets for the fair.

A Facebook group/page is in the works.

"The Best Way to Learn About Bees is To Teach About Bees"  
Nov 1-11 Volusia County Fair exhibition Bee Booth will be in the horticultural building  
Set up for the booth is Tues 10/30/12, 4:30-6pm  
Drop off items for judging Tues 10/30/12, 3-6pm.  
Judging is Wed 10/30/12.  
Ribbons will be on the items when the fair opens

Elementary school children tours will be at the Volusia County Fair Nov 2, 8 & 9 from 9-11am..  
Volunteers are needed at the booth  
Volunteers are needed Nov 12 9-5pm to break down the booth as well as to pick up the judged entries.

Marlin is considering offering A Day in the Bee Yard the end of November.

Mid 1970s - 1980 journals were donated & were available for those interested.  
Honey Floral Source Guide, Cooking with Honey, Honey Nature's Secret Ingredient, how to convert sugar recipes to honey were available for those at the meeting

A raffle will be held at the January meeting. Items will include books about honey bees.

A lesson plan & video will be available for interested teachers who stop by the booth.

Donna Athearn modified a recipe Basic Honey Glazed Recipe & gave a cooking demonstration. Samples were available to try.  
Ms. Athearn will email the recipe for lotion made from beeswax.

Welsh Honey Judge Don encouraged members to enter items at the Volusia County Fair including 3 one pound Queen lined jars, or one black jar, art work, 2# wax, mead

Question & answer period  
Discussion about the pros & cons of yahoo groups & Facebook  
A member would like to exchange email addresses with others interested in bee keeping. At the next meeting those that would like to exchange emails will do so.  
Swarming of bees discussed.  
A resident in Samsula would like a couple of bee hives if someone is interested  
State Apiary Inspector David Westervelt had a stroke & is still in the hospital.

Reminder that due to the busy holiday season, at the last meeting it was voted to suspend club meetings for Nov & Dec 2012.  
The next Beekeepers of Volusia County Club Meeting will be January 23, 2013 at 6:30pm.

Adjourned 7:42pm



# Businesses of Members



**Full Moon Natives**

Specializing in  
Native & Waterwise Plants  
Eco Landscape Designs  
Butterfly Gardens

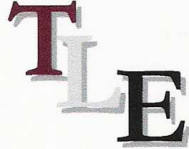
**Kevin & Marvette Bagwell**  
**386.212.9923**  
[www.FullMoonNatives.com](http://www.FullMoonNatives.com)  
1737 Fern Park Drive  
Port Orange, FL 32128  
kevinb@FullMoonNatives.com

1 mile west of  
I-95/Dunlawton  
**Look for the Sun Totem**

Mon-Wed by appointment  
Thur-Fri 10:00-5:00  
Saturday 8:00-4:00

TERRY L. ELLIS, President

**TLE CONSTRUCTION ENTERPRISES, INC.**  
**GENERAL & ROOFING CONTRACTOR**  
COMMERCIAL RESIDENTIAL  
LICENSED, INSURED & STATE CERTIFIED



Ormond Beach, Florida

Phone: 386 615 6575  
Fax: 386 615 6501  
Email: [tleenterprises@cfl.rr.com](mailto:tleenterprises@cfl.rr.com)  
Website: [www.TLEconstruction.com](http://www.TLEconstruction.com)

VOLUSIA BUILDING INDUSTRY ASSOCIATION  
Builder Member

*Clifton Farms, Inc.*  
Growers of Southern Peas & Green Peanuts



*Jody & Carmen Clifton*  
Owners/Operators

6575 State Road #11  
DeLeon Springs, Florida  
32130

386 985-5142  
386 717-0521 (C)  
[CAClifton2@aol.com](mailto:CAClifton2@aol.com)

**Deb's Bee Supply**



**Hive Bodies, Supers,  
Frames, Foundation,  
Smokers, Hive Tools and More!**  
**(904) 886-9389**



**OLD SAWMILL  
ELECTRIC, INC.**

Donald Walker

Over 23 Years Experience  
Industrial, Commercial & Residential  
Service & Repairs

Licensed & Insured Cell: 386-566-6126  
ER13014236 Home: 386-738-8690

**S&S** Apiaries **BEE  
REMOVAL**

Single Story Hives & 5 Frame Nucs  
Pure Honey & More  
FOR SALE



Jesse Azam  
(386) 478-9722 Cell • (386) 427-6543 Fax  
116 Riverside Terrace • Edgewater, FL 32141

*Alysian Apiaries*  
Helping the environment one bee at a  
time!



Honey bee removal  
Bee sales  
Honey  
Hive products

Scott MacMahon 407/ 417-1896  
Peggy MacMahon  
Ian MacMahon [scottmacmahon@yahoo.com](mailto:scottmacmahon@yahoo.com)

**“The bee is more honored than other animals, not because he labors,  
but because she labors for others—Saint John Chrysostom**

# Beekeeping —Classifieds

1/8 wire for sale, 3 feet wide, \$2.50 per running foot—Don Druckert <[ndruckert@cfl.rr.com](mailto:ndruckert@cfl.rr.com)>

Want to sell Beekeeping related goods or services? E-mail the Newsletter at [Beekeeper7501@aol.com](mailto:Beekeeper7501@aol.com)

# Beekeepers of Volusia County, Florida

## Membership Registration Form—2013

---

Name \_\_\_\_\_

---

Address \_\_\_\_\_

City \_\_\_\_\_ State \_\_\_\_ Zip Code \_\_\_\_\_

---

Telephone Number \_\_\_\_\_

---

**E-mail address: Important - Much business is done by electronic mail**

1. Regular Membership (includes family members) \$15.00 [ ]
2. Lifetime membership—\$250.00

**Please make checks payable to Beekeepers of Volusia County, Florida**

**Bring to meeting or mail to:**

**Ron Kull, Treasurer, 2525 Palm Dr.  
Port Orange, FL 32128,  
Phone: 1-386-451-2978  
E-mail: Kullrp@yahoo.com**

**Meeting Information...**