

**Beekeepers
of
Volusia County
Florida**

**Founded
February 9, 2010**



March 2013

**President's
Corner**

**P
R
O
P
I
L
I
S**

From the President's Hive Stand

Happy March Beekeepers of Volusia Co. we will be back at our regular meeting spot on the 27th. It has been a very busy month culminating with our Wednesday meeting and talk with the County Tax appraiser about agriculture exemptions. The Beekeeper of Volusia Co. were well represented at the Bee College on the 8th and 9th of March with at least 10 club member in attendance to enjoy the numerous presentations and classes. The Honey Show was a highlight at the Bee College as usual and our members did not disappoint the judges, Don Kent won numerous awards as well as Elaine Schoch. Lagoonacy at the Marine Discovery Center in NSB on the 16th was a blast representing the club with Tom and Rita Bartlett talking to a steady stream of people wanting to learn about Honey Bees and Beekeeping. That theme was repeated at the Deland Wild Flower Festival last Saturday but magnified by 10 times more people, there were time the people were 4 deep in front of our booth. I was asked to speak in the Athens Theater which was a Thrill. I would like to thank Tom and Rita Bartlett for soldiering on with me for the last two weekends, as well as Ron and Mary Kull, Joel and June Vincent, Don Ruckert and Norm Frederick for helping at the booth in Deland.

Best Wishes
Marlin Athearn
President: Beekeepers of Volusia Co. Fl.

Events of Interest to Beekeepers

March 27, 2013 Beekeepers of Volusia County Meeting, 6:30pm at the Volusia County Ag Center

Check out the Full Moon Native Nursery for the 2013 Seminar Schedule.

Sugar Mill Gardens, Port Orange, Fl.—Spring Fling—May 05, 2013



Hello Beekeepers of Volusia County

Spring is just around the corner and to Beekeepers this is the time for Swarm Control. The following is a six (6) step approach to swarm control which is outlined in UF EDIS Publication ENY 160:

- Clip 1/2 of one forewing of the Queen
- Remove frames of bees/brood to add to weaker colonies or use to create nucs
- Requeen colonies yearly
- Cut queen cells from colonies every seven to ten days beginning four weeks prior to the primary nectar flow.
- Provide adequate empty combs in the brood nest and/or add supers to reduce colony congestion.
- Equalize strong and weak colonies prior to the primary nectar flow.

See the full article—Swarm Control for Managed Beehives—EDIS Publication

Need Help? Call A Mentor!

Marlin Athearn : 386-428-0838
mjathear@volusia.k12.fl.us—New Smyrna Beach

Tom Bartlett: beekeeper7501 @aol.com—386-756-2571—Port Orange

Don Kent: Doggonekent@gmail.com, 386-672-0995—Ormond Beach

Mike Hays: Jhays8@cfl.rr.com—386-671-Or0311—Ormond Beach

“The happiness of the bee and the dolphin is to exist For man it is to know that and to wonder at it. Jacques Yves Cousteau

Florida Management Beekeeper Calendar – Central Florida

Used with permission of University of Florida Honey Bee Research and Extension Laboratory

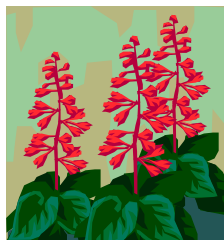
Month	Management Calendar	Blooming Plants
January	1- Feed colonies if light (colonies can starve!) 2- Nosema can be a significant colony problem this time of year. You can treat colonies for Nosema disease using Fumigillin. Colonies may need as much as 4 gallons of medicated syrup to control <i>Nosema ceranae</i> . 3- Repair/paint old equipment	Sand Pine ^F , Maple ^F , Willow ^{FM} F ^F continues to bloom in February FM ^{FM} continues to bloom in February and March
February	1- Feed colonies if light (colonies can starve!) 2- Can treat colonies for Nosema disease using Fumigillin. 3- Can treat with Terramycin or Tylan for AFB.	Plum ^M , Cherry ^M , Oak ^M , Walther Viburnum ^M , Sweet Clover ^M , Blueberry ^M , Haw ^M , Fetterbush ^M M ^M continues to bloom in March
March Note: Citrus blooms in March. Make sure your colonies are ready. Talk with your growers about their pesticide habits.	1- Attend UF Bee College in Marineland March 8 & 9!!! 2- Colony Populations begin to grow! Add supers and/or control swarming as necessary. 3- Can treat with Terramycin or Tylan <i>dust</i> for AFB/EFB. 4- Make nucs/splits.	Orange, Spanish Needle
April	1- Disease and queen problems should be remedied. 2- Make splits/nucs – new queens available 3- Control swarming 4- Add supers, the nectar flow began in late March	Orange, Sweet clover, Wild Blueberry, Haw, Fetterbush ^M , Spanish Needle ^{MJ} , Galberry ^M , Dog Hobble ^{MJ} , Palmetto ^{MJ} , Mexican Clover ^{MJ} , Butter Mint ^{MJ} M ^M continues to bloom in May J ^J continues to bloom in June MJ ^{MJ} continues to bloom in May and June
May	1- Continue to inspect for colony maladies but don't treat for diseases while producing honey 2- Continue swarm control 3- Super as necessary	Palm ^J , Gopher Apple ^J , Joint Weed ^J , Sandhill Prairie Clover ^J , Spiderwort/Dayflower ^J J ^J continues to bloom in June



Florida Management Beekeeper Calendar – Central Florida

Used with permission of University of Florida Honey Bee Research and Extension Laboratory

Month	Management Calendar	Blooming Plants
June	<p>1- Super as necessary for late flowers</p> <p>2- Varroa populations begin to grow – monitor colonies closely. The economic threshold is 60+ mites/day on a sticky screen or 17+ mites in an ether roll. Treat if you exceed these numbers.</p>	Mangrove, Red Bay, Cabbage Palm
July	<p>1- Remove and process honey – main flow stops</p> <p>2- Varroa populations begin to grow – monitor colonies closely. The economic threshold is 60+ mite/day on a sticky screen or 17+ mites in an ether roll for a colony of average strength. Treat if you exceed these numbers. Option include: Apigard, ApilifeVAR, Mite Away II.</p>	<p>Spanish Needle^{AS}, Palmetto, Mexican Clover^{AS}, Buttermint, Palm, Gopher Apple, Joint Weed^A, Redbay^{AS}, Sandhill Prairie Clover^A, Partridge Pea^A, Mangrove^A, Primrose Willow^{AS}, Spiderwort/Dayflower^{AS}</p> <p>^Acontinues to bloom in August ^{AS}continues to bloom in September</p>
August	<p>1- Monitor colonies for varroa (see July)!</p> <p>2- Treat with Terramycin <i>dust</i> for AFB/EFB</p> <p>3- Feed colonies if light</p> <p>4-Monitor for and control small hive beetles</p> <p>5- It's hot! Ensure adequate colony ventilation</p>	<p>Spotted Mint^S, Goldenrod^S, Vine Aster^S, Sumac^S</p> <p>^Scontinues to bloom in September</p>
September	<p>1- Monitor colonies for varroa (see July)!</p> <p>2- Super colonies if strong B. Pepper flow</p> <p>3- Consider treating colonies for Nosema disease using Fumidil-B. Colonies may need as much as 4 gallons of medicated syrup to control <i>Nosema cerana</i>.</p> <p>5- If no nectar flow, feed colonies if light</p>	<p>Smart Weed, Brazilian Pepper, Bush Aster</p> <p>Note: Brazilian Pepper blooms from September through October and is a significant fall source of nectar for bees.</p>
October – December	<p>1- Varroa populations peaked in Aug/Sept. The economic threshold is 60+ mites/day on a sticky board or 17+ mites in an ether roll for a colony of average strength. Treat if you exceed these numbers. Options include: Apiguard, ApilifeVAR, Mite Away II</p> <p>2- Can treat colonies for Nosema disease using Fumigillin. Colonies may need as much as 4 gallons of medicated syrup to control <i>Nosema cerana</i>.</p> <p>3-Monitor for and control small hive beetles (options include Checkmite+, GuardStar, Hood traps and West Beetle traps)</p> <p>4- Feed colonies if light (colonies can starve!)</p> <p>5-Can treat for tracheal mites (mix vegetable oil and powdered sugar until doughy (not sticky to touch): place a pancake-sized patty on top bars of brood chamber.</p>	<p>Oct: Spanish Needle, Mexican Clover^N, Primrose Willow^N, Spotted Mint^N, Goldenrod^M, Vine Aster^N, Smart Weed^N, Bush AsterND</p> <p>^Ncontinues to bloom in November</p> <p>^Dcontinues to bloom in December</p> <p>Nov: Nothing new blooms</p> <p>Dec: Nothing new blooms</p>



Beekeepers of Volusia County

Next Meeting

**Wednesday
March 27, 2013
6:30 PM**

**Volusia County Ag Center
See E-mail for Information**

Check Out Our Website

www.beekeepersofvolusiacountyfl.com

Club Officers

President—Marlin Athearn—mjathearn@Volusia.k.12.fl.us— 386-428-0838

Vice President —Mike Hays——jhays8@cfl.rr.com———386-671-3011

Treasurer ———Ron Kull———kullrp@yahoo.com———386-451-2978

Secretary — —Donna Balo———balo_d@hotmail.com———386-738-1954

Local Beekeeping Suppliers who are members of the Club

1. **Debs Beekeeping Supplies** – Hastings Fl. & Jacksonville Fl.
1-904-886-9389 & 1-877-703-DEBS
2. **North American Bee Hive Co.** - Jacksonville, Fl.—1-904-378-5006
3. **Jester Bee Co.**— Mims, Fl. Nucs, Queens, Queen Cells—Kevin@Jesterbee.com
Please call us at : 870 243 1596 with your order.
4. **D & J Apiary**—17732 S. E. 283rd Ave., Umatilla, Florida—352-669-4233



“When someone shares something of value with you and you benefit from it, you have a moral obligation to share it with others.” ...

Chinese Proverb

Beekeepers of Volusia County, Florida

Meeting Agenda

March 27, 2013

Call to order and welcome:

Marlin Athearn—President

Business:

- Welcome
- Accept Minutes from the January Meeting
- Membership Fee Reminder (pay tonight)
- Overview of Bee College and March events to date
 1. Bee College—March 8th and 9th
 2. Lagoonacy @ Marine Discovery Center
 3. Deland Wild Flower Festival
- Nominations & Vote 2013 Officers
- Honey Warmer Demo
- Tax Appraiser Presentation— Define Green Belt Laws & Ag Exemptions

Dismiss and close

.Beekeepers of Volusia County Club Meeting
Minutes of 01/23/13

Called to order by Marlin Athearn, president @ 6:30 pm

56 in attendance

Minutes of 10//24/12 approved

Treasury Report - expenditures after the last meeting:

fair supplies to hand out	\$628.45
computer roster program	\$225
sponsor student to Caribbean Bee College in Granada	\$150
Balance	\$1420.46

Membership dues \$15 per family per year, due now.

"The Best Way to Learn About Bees is To Teach About Bees"

Nov 1-11 Volusia County Fair exhibition Bee Booth was in the horticultural building.

Thank-you to 16 volunteers who set up & took down the exhibit & were available for questions/answers & honey testing

Live observation hive 8 days was a "people magnet."

300-350 club pamphlets given out as well as additional info.

Good turn out of entrants for Welch honey judging of honey, art, mead, creamed honey

Beekeepers of Volusia County Club hive now at Marlin's home. It has been requeened & fed.

Discussion of possibilities for a new home for the hive. Where should it go? Who will care for it? How will any income be distributed?

Amended motion tabled until next meeting: raffle the club hive or find a location & mission for the hive.

Saturday 02/23/12 A Day in the Bee Yard at Cracker Creek. 9am on Taylor Road just N of 95 in Port Orange

Motion to have a hive building clinic at that meeting, approved.

Motion to buy the supplies for the hive building clinic, approved.

The completed hive will be raffled at the end of the meeting

Those who would like to purchase lunch at A Day in the Bee Yard should send an email to be in the count.

Motion to have a new member liaison to help & assist those interested in beekeeping, approved.

Shelley (Umatilla), Don (Ormond Beach), Mike (Ormond Beach) have volunteered.

Roster for new members/visitor sign up sheet phone # & emails will be set out at each meeting.

Website will be updated soon.

Deland Wildlife Festival Saturday 03/23/13, 9am-3pm. Marlin is speaking 2:00 at the Athens Theatre. Members can sell honey or bee products at the booth. The booth is free because Marlin is speaking. Volunteers needed for the booth.

Mid 1970s - 1980 journals were donated & available for those interested.

A raffle was held for books about honey bees circa 1950s - 1960s..

Election of club officers in March.

Thank-you to Nick for donating cards with the club logo on one side, member info can be written on the other.

Night Guard, to deter bears, was tried by Mike, but the bears destroyed his hives.

Members who try new products encouraged to share their experiences.

Insecticide pamphlets were very popular at the fair & member would recommend getting additional pamphlets.

D&J Apiary at the meeting for those in need of honey bee supplies & equipment.

Because of an error in scheduling by the Volusia County Extension Service, there will not be a February club meeting on the 4th Wednesday in February. A Day in the Bee Yard at Cracker Creek. Saturday 02/23/12 9am will be held in its place.

The next Beekeepers of Volusia County Club Meeting will be March 27, 2013 at 6:30pm.

Adjourned 7:50pm

Submitted by Donna Balo, secretary

Businesses of Members



Full Moon Natives

Specializing in
Native & Waterwise Plants
Eco Landscape Designs
Butterfly Gardens

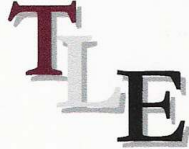
Kevin & Marvette Bagwell
386.212.9923
www.FullMoonNatives.com
1737 Fern Park Drive
Port Orange, FL 32128
kevinb@FullMoonNatives.com

1 mile west of
I-95/Dunlawton
Look for the Sun Totem

Mon-Wed by appointment
Thur-Fri 10:00-5:00
Saturday 8:00-4:00

TERRY L. ELLIS, President

TLE CONSTRUCTION ENTERPRISES, INC.
GENERAL & ROOFING CONTRACTOR
COMMERCIAL RESIDENTIAL
LICENSED, INSURED & STATE CERTIFIED



Ormond Beach, Florida

Phone: 386 615 6575
Fax: 386 615 6501
Email: tleenterprises@cfl.rr.com
Website: www.TLEconstruction.com

VOLUSIA BUILDING INDUSTRY ASSOCIATION
Builder Member

Clifton Farms, Inc.
Growers of Southern Peas & Green Peanuts



Jody & Carmen Clifton
Owners/Operators

6575 State Road #11
DeLeon Springs, Florida
32130

386 985-5142
386 717-0521 (C)
CAClifton2@aol.com

Deb's Bee Supply



**Hive Bodies, Supers,
Frames, Foundation,
Smokers, Hive Tools and More!**
(904) 886-9389



**OLD SAWMILL
ELECTRIC, INC.**

Donald Walker

Over 23 Years Experience
Industrial, Commercial & Residential
Service & Repairs

Licensed & Insured Cell: 386-566-6126
ER13014236 Home: 386-738-8690


S&S Apiaries **BEE REMOVAL**

Single Story Hives & 5 Frame Nucs
Pure Honey & More
FOR SALE



Jesse Azam
(386) 478-9722 Cell • (386) 427-6543 Fax
116 Riverside Terrace • Edgewater, FL 32141

Alysian Apiaries
Helping the environment one bee at a
time!



Honey bee removal
Bee sales
Honey
Hive products
407/ 417-1896

Scott MacMahon
Peggy MacMahon
Ian MacMahon scottmacmahon@yahoo.com

“The bee is more honored than other animals, not because he labors, but because she labors for others—Saint John Chrysostom

Beekeeping —Classifieds

1/8 wire for sale, 3 feet wide, \$2.50 per running foot—Don Druckert <ndruckert@cfl.rr.com>

Want to sell Beekeeping related goods or services? E-mail the Newsletter at Beekeeper7501@aol.com

Beekeepers of Volusia County, Florida

Membership Registration Form—2013

Name

Address

City _____ **State** ____ **Zip Code**

Telephone Number _____

E-mail address: Important - Much business is done by electronic mail

- 1. Regular Membership (includes family members) \$15.00 []**
- 2. Lifetime membership—\$250.00**

Please make checks payable to Beekeepers of Volusia County, Florida

Bring to meeting or mail to:

**Ron Kull, Treasurer, 2525 Palm Dr.
Port Orange, FL 32128,
Phone: 1-386-451-2978
E-mail: Kullrp@yahoo.com**

Meeting Information...