

**Beekeepers
of
Volusia County
Florida**

**Founded
February 9, 2010**



April 2013

**President's
Corner**

**P
R
O
P
I
L
I
S**

From the President's Hive Stand

Spring has finally sprung and it has been a world wind of a few months, we have had members all over the county teaching the general public about the importance of Bees in our world and promoting our club. In March we were in New Smyrna for Lagooney, Deland for the Deland Wild Flower Festival and in April the Earth Day Festival in Edgewater and I know Tom was at a Butterfly Festival as well. If you are participated in educational events let me know so I can post them for the members to see.

It's finally raining in central Florida and some of my hives are finally starting to put on some honey, it's about time I was getting tired of feeding them. This will be a great time to do splits if that's on your schedule, it's always better to do spits during a honey flow they tend to build up faster with less feeding. Requeening is also something you should be planning for if you haven't done it already. It's part of Best Management Practices and is one of the ways to reduce swarming. We will be having a requeening class at our April meeting so if you're new to this part of Beekeeping this class should help. We also have several mentors that can help you through the process. I hope everyone has a productive spring. The next day in the bee yard has been scheduled for June 1st.

Dr. Ellis has postponed his presentation until Aug. due to a grant funded trip to South Africa to study Cape Bees.

Best Wishes
Marlin Athearn
President: Beekeepers of Volusia Co. Fl.

Events of Interest to Beekeepers

April 24—Beekeepers of Volusia County Meeting—6:30 pm—Volusia County Ag Center
Check out the Full Moon Native Nursery for the 2013 Seminar Schedule.

Sugar Mill Gardens, Port Orange, Fl.—Spring Fling—May 05, 2013

June 01—Beekeepers of Volusia County, a day in the bee yard—time and place to be announced.



Hello Beekeepers of Volusia County

Spring is here to Beekeepers this is the time for Swarm Control. The following is a six (6) step approach to swarm control which is outlined in UF EDIS Publication ENY 160:

- Clip 1/2 of one forewing of the Queen
- Remove frames of bees/brood to add to weaker colonies or use to create nucs
- Requeen colonies yearly
- Cut queen cells from colonies every seven to ten days beginning four weeks prior to the primary nectar flow.
- Provide adequate empty combs in the brood nest and/or add supers to reduce colony congestion.
- Equalize strong and weak colonies prior to the primary nectar flow.

See the full article—Swarm Control for Managed Beehives—EDIS Publication #ENY-160

Need Help? Call A Mentor!

Marlin Athearn : 386-428-0838
mjathear@volusia.k12.fl.us—New Smyrna Beach

Tom Bartlett: beekeeper7501@aol.com—
386-756-2571—Port Orange

Don Kent: Doggonekent@gmail.com, 386-
672-0995—Ormond Beach

Mike Hays: Jhays8@cfl.rr.com—386-671-
Or0311—Ormond Beach

“The happiness of the bee and the dolphin is to exist For man it is to know that and to wonder at it. Jacques Yves Cousteau

Florida Management Beekeeper Calendar – Central Florida

Used with permission of University of Florida Honey Bee Research and Extension Laboratory

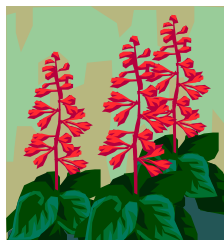
Month	Management Calendar	Blooming Plants
January	1- Feed colonies if light (colonies can starve!) 2- Nosema can be a significant colony problem this time of year. You can treat colonies for Nosema disease using Fumigillin. Colonies may need as much as 4 gallons of medicated syrup to control <i>Nosema ceranae</i> . 3- Repair/paint old equipment	Sand Pine ^F , Maple ^F , Willow ^{FM} F ^F continues to bloom in February FM ^{FM} continues to bloom in February and March
February	1- Feed colonies if light (colonies can starve!) 2- Can treat colonies for Nosema disease using Fumigillin. 3- Can treat with Terramycin or Tylan for AFB.	Plum ^M , Cherry ^M , Oak ^M , Walther Viburnum ^M , Sweet Clover ^M , Blueberry ^M , Haw ^M , Fetterbush ^M M ^M continues to bloom in March
March Note: Citrus blooms in March. Make sure your colonies are ready. Talk with your growers about their pesticide habits.	1- Attend UF Bee College in Marineland March 8 & 9!!! 2- Colony Populations begin to grow! Add supers and/or control swarming as necessary. 3- Can treat with Terramycin or Tylan <i>dust</i> for AFB/EFB. 4- Make nucs/splits.	Orange, Spanish Needle
April	1- Disease and queen problems should be remedied. 2- Make splits/nucs – new queens available 3- Control swarming 4- Add supers, the nectar flow began in late March	Orange, Sweet clover, Wild Blueberry, Haw, Fetterbush ^M , Spanish Needle ^{MJ} , Galberry ^M , Dog Hobble ^{MJ} , Palmetto ^{MJ} , Mexican Clover ^{MJ} , Butter Mint ^{MJ} M ^M continues to bloom in May J ^J continues to bloom in June MJ ^{MJ} continues to bloom in May and June
May	1- Continue to inspect for colony maladies but don't treat for diseases while producing honey 2- Continue swarm control 3- Super as necessary	Palm ^J , Gopher Apple ^J , Joint Weed ^J , Sandhill Prairie Clover ^J , Spiderwort/Dayflower ^J J ^J continues to bloom in June



Florida Management Beekeeper Calendar – Central Florida

Used with permission of University of Florida Honey Bee Research and Extension Laboratory

Month	Management Calendar	Blooming Plants
June	<p>1- Super as necessary for late flowers</p> <p>2- Varroa populations begin to grow – monitor colonies closely. The economic threshold is 60+ mites/day on a sticky screen or 17+ mites in an ether roll. Treat if you exceed these numbers.</p>	Mangrove, Red Bay, Cabbage Palm
July	<p>1- Remove and process honey – main flow stops</p> <p>2- Varroa populations begin to grow – monitor colonies closely. The economic threshold is 60+ mite/day on a sticky screen or 17+ mites in an ether roll for a colony of average strength. Treat if you exceed these numbers. Option include: Apigard, ApilifeVAR, Mite Away II.</p>	<p>Spanish Needle^{AS}, Palmetto, Mexican Clover^{AS}, Buttermint, Palm, Gopher Apple, Joint Weed^A, Redbay^{AS}, Sandhill Prairie Clover^A, Partridge Pea^A, Mangrove^A, Primrose Willow^{AS}, Spiderwort/Dayflower^{AS}</p> <p>^Acontinues to bloom in August ^{AS}continues to bloom in September</p>
August	<p>1- Monitor colonies for varroa (see July)!</p> <p>2- Treat with Terramycin <i>dust</i> for AFB/EFB</p> <p>3- Feed colonies if light</p> <p>4-Monitor for and control small hive beetles</p> <p>5- It's hot! Ensure adequate colony ventilation</p>	<p>Spotted Mint^S, Goldenrod^S, Vine Aster^S, Sumac^S</p> <p>^Scontinues to bloom in September</p>
September	<p>1- Monitor colonies for varroa (see July)!</p> <p>2- Super colonies if strong B. Pepper flow</p> <p>3- Consider treating colonies for Nosema disease using Fumidil-B. Colonies may need as much as 4 gallons of medicated syrup to control <i>Nosema cerana</i>.</p> <p>5- If no nectar flow, feed colonies if light</p>	<p>Smart Weed, Brazilian Pepper, Bush Aster</p> <p>Note: Brazilian Pepper blooms from September through October and is a significant fall source of nectar for bees.</p>
October – December	<p>1- Varroa populations peaked in Aug/Sept. The economic threshold is 60+ mites/day on a sticky board or 17+ mites in an ether roll for a colony of average strength. Treat if you exceed these numbers. Options include: Apiguard, ApilifeVAR, Mite Away II</p> <p>2- Can treat colonies for Nosema disease using Fumigillin. Colonies may need as much as 4 gallons of medicated syrup to control <i>Nosema cerana</i>.</p> <p>3-Monitor for and control small hive beetles (options include Checkmite+, GuardStar, Hood traps and West Beetle traps)</p> <p>4- Feed colonies if light (colonies can starve!)</p> <p>5-Can treat for tracheal mites (mix vegetable oil and powdered sugar until doughy (not sticky to touch): place a pancake-sized patty on top bars of brood chamber.</p>	<p>Oct: Spanish Needle, Mexican Clover^N, Primrose Willow^N, Spotted Mint^N, Goldenrod^M, Vine Aster^N, Smart Weed^N, Bush AsterND</p> <p>^Ncontinues to bloom in November</p> <p>^Dcontinues to bloom in December</p> <p>Nov: Nothing new blooms</p> <p>Dec: Nothing new blooms</p>



Beekeepers of Volusia County

Next Meeting

**Wednesday
April 27, 2013
6:30 PM**

**Volusia County Ag Center
See E-mail for Information**

Check Out Our Website

www.beekeepersofvolusiacountyfl.com

Club Officers

President—Marlin Athearn—mjathearn@volusia.k12.fl.us— 386-428-0838

Vice President —Mike Hays——jhays8@cfl.rr.com———386-671-3011

Treasurer ———Ron Kull———kullrp@yahoo.com———386-451-2978

Secretary — —Donna Balo———balo_d@hotmail.com———386-738-1954

Local Beekeeping Suppliers who are members of the Club

1. **Debs Beekeeping Supplies** – Hastings Fl. & Jacksonville Fl.
1-904-886-9389 & 1-877-703-DEBS
2. **North American Bee Hive Co.** - Jacksonville, Fl.—1-904-378-5006
3. **Jester Bee Co.**— Mims, Fl. Nucs, Queens, Queen Cells—Kevin@Jesterbee.com
Please call us at : 870 243 1596 with your order.
4. **D & J Apiary**—17732 S. E. 283rd Ave., Umatilla, Florida—352-669-4233



“When someone shares something of value with you and you benefit from it, you have a moral obligation to share it with others.” ...

Chinese Proverb

Beekeepers of Volusia County, Florida

Meeting Agenda

April 24, 2013

Call to order and welcome:

Marlin Athearn—President

Business:

- Welcome
- Recognize Visitors
- Treasurer's Report
- Accept Minutes from the March Meeting
- Membership Fee Reminder (pay tonight)
- Have you seen Strange Bee behavior lately?
- Requeening—Why and How ?
- Questions?

Dismiss and close

.Beekeepers of Volusia County Club Meeting
Minutes of 03/27/13

Called to order by Marlin Athearn, president @ 6:30pm 50 in attendance—January minutes approved

Membership dues \$15 per family per year, due now. Treasury Report: \$2050.54 Increased from raffle at the last meeting & A Day in the Bee Yard & membership dues.

Representatives from the club attended Lagoonacy at the Marine Discovery Center in NSB. Observation hive again a "people magnet." 700-800 people Deland Wildlife Festival 7000-8000 people estimated at the event. Marlin gave a talk "Backyard Beekeeping" at the Athens Theatre UF Bee College was rated as excellent by those that attended

Officer election, all current officers reelected

Marlin Athearn, president

Mike Hays, vice president

Ron Kull, treasurer

Donna Balo, secretary

Tom Bartlett has been in charge of the newsletter. If anyone would like to do it, let Marlin or Tom know. Tom agreed to continue if no one else wanted to do it. 95 emails sent each month, 2/3 are opened, 35 members paid.

Tom Bartlett "Mr. Gadget" demonstrated a Honey Bucket Heater made to rewarm honey that crystallizes. Copies of detailed instructions were provided. The unit will handle a 5 gallon bucket. It is heated by a light bulb. There is a digital thermometer & dimmer switch. Tom states he found it effective to decrystallize honey, dehumidify honey & melt beeswax.

MI Beekeeping Club website is a good resource according to Tom.

Copies available at the meeting from UF EDIS webpage Swarm Control for Managed Beehives managing swarm control for backyard beekeeping

New members invited to sign in if they would like a liaison to contact them. Shelley (Umatilla), Don (Ormond Beach), Mike (Ormond Beach) have volunteered.

Club members received honors & awards at the at the Welch Judging Competition at the Bee College. Don Kent won numerous awards. Elaine Schoch & Marlin Athearn also won awards

All members are invited to prepare honey & craft items for upcoming events

A presentation by Tax Appraiser John Hawkins included a discussion of the Green Belt Exemption. Land is classified according to what the land is being used. The purpose of the Agricultural classification is to serve, protect & encourage agriculture. Defines use for agriculture, commercial

Application for the exemption are due by March 1. Applicants must be in operation since January on a yearly basis. In Volusia County may file a late application request if necessary. Documentation is required to prove the exemption is justified. If denied, call to discuss & may reapply. Automatic renewal. By statute will revisit property every 5 years, documentation required at each inspection. About 35% of land in Volusia County is still being farmed.

100 hives is considered a commercial endeavor. Hobbyists have less than 100 hives.

The secretary submitted club meeting news to the Orlando, the Daytona Beach News Journal and the Beacon newspapers.

Open ? & answer & sharing time.

Jesse Adam from S&S Aviaries announced that those that ordered Nuks or queens may pick up Mar 29 & the morning of Mar 30. Special arrangements must be made after those times

Next club meeting April 24. Jamie Ellis from UF will be the speaker.

Adjourned 7:40pm

Submitted by Donna Balo, secretary

Submitted by Donna Balo, secretary

Businesses of Members



Full Moon Natives

Specializing in
Native & Waterwise Plants
Eco Landscape Designs
Butterfly Gardens

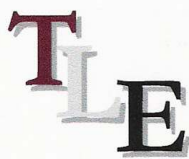
Kevin & Marvette Bagwell
386.212.9923
www.FullMoonNatives.com
1737 Fern Park Drive
Port Orange, FL 32128
kevinb@FullMoonNatives.com

1 mile west of
I-95/Dunlawton
Look for the Sun Totem

Mon-Wed by appointment
Thur-Fri 10:00-5:00
Saturday 8:00-4:00

TERRY L. ELLIS, President

TLE CONSTRUCTION ENTERPRISES, INC.
GENERAL & ROOFING CONTRACTOR
COMMERCIAL RESIDENTIAL
LICENSED, INSURED & STATE CERTIFIED



Ormond Beach, Florida

Phone: 386 615 6575
Fax: 386 615 6501
Email: tleenterprises@cfl.rr.com
Website: www.TLEconstruction.com

VOLUSIA BUILDING INDUSTRY ASSOCIATION
Builder Member

Clifton Farms, Inc.
Growers of Southern Peas & Green Peanuts



Jody & Carmen Clifton
Owners/Operators

6575 State Road #11
DeLeon Springs, Florida
32130

386 985-5142
386 717-0521 (C)
CAClifton2@aol.com

Deb's Bee Supply



**Hive Bodies, Supers,
Frames, Foundation,
Smokers, Hive Tools and More!**
(904) 886-9389



**OLD SAWMILL
ELECTRIC, INC.**

Donald Walker

Over 23 Years Experience
Industrial, Commercial & Residential
Service & Repairs

Licensed & Insured Cell: 386-566-6126
ER13014236 Home: 386-738-8690

S&S Apiaries **BEE REMOVAL**

Single Story Hives & 5 Frame Nucs
Pure Honey & More
FOR SALE



Jesse Azam
(386) 478-9722 Cell • (386) 427-6543 Fax
116 Riverside Terrace • Edgewater, FL 32141

Alysian Apiaries
Helping the environment one bee at a
time!



Honey bee removal
Bee sales
Honey
Hive products

Scott MacMahon 407/ 417-1896
Peggy MacMahon
Ian MacMahon scottmacmahon@yahoo.com

“The bee is more honored than other animals, not because he labors, but because she labors for others—Saint John Chrysostom

Beekeeping —Classifieds

1/8 wire for sale, 3 feet wide, \$2.50 per running foot—Don Druckert <ndruckert@cfl.rr.com>

Want to sell Beekeeping related goods or services? E-mail the Newsletter at Beekeeper7501@aol.com

Beekeepers of Volusia County, Florida

Membership Registration Form—2013

Name _____

Address _____

City _____ State ____ Zip Code _____

Telephone Number _____

E-mail address: Important - Much business is done by electronic mail

1. Regular Membership (includes family members) \$15.00 []
2. Lifetime membership—\$250.00

Please make checks payable to Beekeepers of Volusia County, Florida

Bring to meeting or mail to:

**Ron Kull, Treasurer, 2525 Palm Dr.
Port Orange, FL 32128,
Phone: 1-386-451-2978
E-mail: Kullrp@yahoo.com**

Meeting Information...