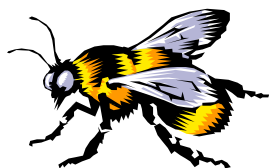


**Founded
February 9, 2010**



**Beekeepers
of
Volusia County
Florida**

February 2015

President's Corner

From the President's Hive Stand

Hello Folks;

Spring is right around the corner, the bees are busy bringing in pollen and nectar when they find it. During my hive inspections this weekend, I noticed that the hives are also making drone cells, the queen has been laying a lot of eggs and my winter honey supers are full of honey. My colonies look very strong going into Spring. During the cold days the bees are trying to protect the brood and staying in the hive. On warm days my hives are very busy, a lot of bees coming and going. I have added an extra honey super to all of my hives to add additional space. The extra honey super will add additional space and provide more storage to make honey.

During early February I installed four swarm traps near my hives. One of the swarm traps already has a colony of bees in it ! I have a couple of beekeepers within a mile or two from my yard and I am always catching bees in my traps. Because it seems February and March are the primary swarming months in our area, I encourage all of you to add supers to your hives and install swarm traps now. Also, so you want now may be a good time to do splits if you can get queens or find a queen cell in your hive.

Tom Bartlett

President: Beekeepers of Volusia Co.

UF Master Beekeeper

Events of Interest to Beekeepers

**Volusia County Beekeepers Meeting—Fourth
Wednesday of February 2015 (February 25th),
Volusia County Fair Grounds, 6:30 pm to
8:00pm**

**UF Bee College—March 6 & 7, Whitney Labo-
ratory, Marine Land, Florida**

**Volusia County Beekeepers Meeting—Fourth
Wednesday of March 2015 (March 25th), Volu-
sia County Fair Grounds, 6:30 pm to 8:00pm**



Swarm Management Idea's

- Add an additional honey super to your hives.
- Consider adding an additional deep box to you hive (double deep) help manage-ment swarm and helps you to make splits in the spring.
- Place Swarm Traps in and around your bee yard, catch your swarms of other bee-keeper / feral colonies which swarm, re-box and requeen, free bees !!
- On a warm day check on your brood boxes looking for queen cells, swarm cells to get a little advance notice of the colony intentions. Usually by the time you see the queen cells the old queen has all ready swarmed, so removing the queen cells is not a good idea.
- If you can find some queens or Queen cells in you hives, you might consider making some splits.

Need Help? Call A Mentor!

Marlin Athearn : 386-428-0838

mjathear@volusia.k12.fl.us—New Smyrna Beach

Tom Bartlett: beekeeper7501@aol.com—386-756-2571—Port Orange

Don Kent:Doggonekent@gmail.com, 386-672-0995—Ormond Beach

Mike Hays: haysmj2527@gmail.com, 386-957-4795

“The happiness of the bee and the dolphin is to exist For man it is to know that and to wonder at it. Jacques Yves Cousteau

Florida Management Beekeeper Calendar – Central Florida

Used with permission of University of Florida Honey Bee Research and Extension Laboratory

Month	Management Calendar	Blooming Plants
January	1- Feed colonies if light (colonies can starve!) 2- Nosema can be a significant colony problem this time of year. You can treat colonies for Nosema disease using Fumigillin. Colonies may need as much as 4 gallons of medicated syrup to control <i>Nosema ceranae</i> . 3- Repair/paint old equipment	Sand Pine ^F , Maple ^F , Willow ^{FM} ^F continues to bloom in February ^{FM} continues to bloom in February and March
February	1- Feed colonies if light (colonies can starve!) 2- Can treat colonies for Nosema disease using Fumigillin. 3- Can treat with Terramycin or Tylan for AFB.	Plum ^M , Cherry ^M , Oak ^M , Walther Viburnum ^M , Sweet Clover ^M , Blueberry ^M , Haw ^M , Fetterbush ^M ^M continues to bloom in March
March Note: Citrus blooms in March. Make sure your colonies are ready. Talk with your growers about their pesticide habits.	1- Attend UF Bee College in Marineland March 8 & 9!!! 2- Colony Populations begin to grow! Add supers and/or control swarming as necessary. 3- Can treat with Terramycin or Tylan <i>dust</i> for AFB/EFB. 4- Make nucs/splits.	Orange, Spanish Needle
April	1- Disease and queen problems should be remedied. 2- Make splits/nucs – new queens available 3- Control swarming 4- Add supers, the nectar flow began in late March	Orange, Sweet clover, Wild Blueberry, Haw, Fetterbush ^M , Spanish Needle ^{MJ} , Galberry ^M , Dog Hobble ^{MJ} , Palmetto ^{MJ} , Mexican Clover ^{MJ} , Butter Mint ^{MJ} ^M continues to bloom in May ^J continues to bloom in June ^{MJ} continues to bloom in May and June
May	1- Continue to inspect for colony maladies but don't treat for diseases while producing honey 2- Continue swarm control 3- Super as necessary	Palm ^J , Gopher Apple ^J , Joint Weed ^J , Sandhill Prairie Clover ^J , Spiderwort/Dayflower ^J ^J continues to bloom in June



Florida Management Beekeeper Calendar – Central Florida

Used with permission of University of Florida Honey Bee Research and Extension Laboratory

Month	Management Calendar	Blooming Plants
June	1- Super as necessary for late flowers 2- Varroa populations begin to grow – monitor colonies closely. The economic threshold is 60+ mites/day on a sticky screen or 17+ mites in an ether roll. Treat if you exceed these numbers.	Mangrove, Red Bay, Cabbage Palm
July	1- Remove and process honey – main flow stops 2- Varroa populations begin to grow – monitor colonies closely. The economic threshold is 60+ mite/day on a sticky screen or 17+ mites in an ether roll for a colony of average strength. Treat if you exceed these numbers. Option include: Apigard, ApilifeVAR, Mite Away II.	Spanish Needle ^{AS} , Palmetto, Mexican Clover ^{AS} , Buttermint, Palm, Gopher Apple, Joint Weed ^A , Redbay ^{AS} , Sandhill Prairie Clover ^A , Partridge Pea ^A , Mangrove ^A , Primrose Willow ^{AS} , Spiderwort/Dayflower ^{AS} ^A continues to bloom in August ^{AS} continues to bloom in September
August	1- Monitor colonies for varroa (see July)! 2- Treat with Terramycin <i>dust</i> for AFB/EFB 3- Feed colonies if light 4-Monitor for and control small hive beetles 5- It's hot! Ensure adequate colony ventilation	Spotted Mint ^S , Goldenrod ^S , Vine Aster ^S , Sumac ^S ^S continues to bloom in September
September	1- Monitor colonies for varroa (see July)! 2- Super colonies if strong B. Pepper flow 3- Consider treating colonies for Nosema disease using Fumidil-B. Colonies may need as much as 4 gallons of medicated syrup to control <i>Nosema cerana</i> . 5- If no nectar flow, feed colonies if light	Smart Weed, Brazilian Pepper, Bush Aster Note: Brazilian Pepper blooms from September through October and is a significant fall source of nectar for bees.
October – December	1- Varroa populations peaked in Aug/Sept. The economic threshold is 60+ mites/day on a sticky board or 17+ mites in an ether roll for a colony of average strength . Treat if you exceed these numbers. Options include: Apiguard, ApilifeVAR, Mite Away II 2- Can treat colonies for Nosema disease using Fumigillin. Colonies may need as much as 4 gallons of medicated syrup to control <i>Nosema cerana</i> . 3-Monitor for and control small hive beetles (options include Checkmite+, GuardStar, Hood traps and West Beetle traps) 4- Feed colonies if light (colonies can starve!) 5-Can treat for tracheal mites (mix vegetable oil and powdered sugar until doughy (not sticky to touch): place a pancake-sized patty on top bars of brood chamber.	Oct: Spanish Needle, Mexican Clover ^N , Primrose Willow ^N , Spotted Mint ^N , Goldenrod ^M , Vine Aster ^N , Smart Weed ^N , Bush Aster ND ^N continues to bloom in November ^D continues to bloom in December Nov: Nothing new blooms Dec: Nothing new blooms



Beekeepers of Volusia County

Next Meeting

**Wednesday
February 25, 2015
6:30 PM**

Volusia County Ag Center

Check Out Our Website

www.beekeepersofvolusiacountyfl.com

Club Officers

President — Tom Bartlett — Beekeeper7501@aol.com — 386-756-2571

Vice President — Mike Hays — haysmj2527@gmail.com — 386-290-5476

Treasurer — Ron Kull — kullrp@yahoo.com — 386-451-2978

Secretary — Donna Balo — balo_d@hotmail.com — 386-738-1954

Master Beekeepers — Tom Bartlett & Marlin Athearn — 386-428-0838

Local Beekeeping Suppliers who are members of the Club

1. Jester Bee Co.— Mims, Fl. Nucs, Queens, Queen Cells—Kevin@Jesterbee.com
Please call us at : 870 243 1596 with your order.



“When someone shares something of value with you and you benefit from it, you have a moral obligation to share it with others.”...

Chinese Proverb

Beekeepers of Volusia County, Florida

Meeting Agenda

February 25, 2015

Call to order and welcome:

Tom Bartlett— President—Master Beekeeper

Business:

Welcome

Treasurers report

2015 Membership Dues are Due

Election of 2015 Officers \

Raffle Bee College Ticket

Swarm Management

Black Bear Update

Open Forum / Beekeeping Questions

Dismiss and close

Beekeepers of Volusia County Club Meeting

Minutes of 1/28/15

Called to order by Master Beekeeper Tom Bartlett, president @ 6:35pm.

6 new attendees

40 in attendance.

Treasurer's Report \$1781.95

\$101 recently spent on supplies for the Volusia County Fair

Attendees introduced themselves

Family Membership to the Club is \$15/year, due in February.

Florida State Beekeepers Association is the legislative arm with a lobbyist working on behalf of beekeepers, dues \$15/y.

State membership forms are available from the Club treasurer.

University of Florida Bee College is March 6 & 7 in St. Augustine at Marineland. The cost is \$185 per person.

http://entnemdept.ifas.ufl.edu/honeybee/extension/bee_college.shtml

The Club voted to purchase a ticket at the special club price of \$150. The ticket will be raffled at the February Club meeting.

The Club voted to buy Beekeeping DVDs from Tom Bartlett. Tom valued the DVDs at \$170.23, the Club purchased them from Tom for \$150.

It was voted that the Club Secretary will be the librarian for the DVDs. Members can borrow the DVDs.

Swarm Management was discussed. Swarm management tools were exhibited including the Bee Vac & swarm bucket.

Cut Honey Comb tools were demonstrated.

The next Club meeting is Wed 02/25/15 @ 6:30pm.

Annual dues will be collected at that time.

Club officers will be elected at that meeting.

Adjourned 8:10 pm

Submitted Donna Balo, secretary

Businesses of Members

Full Moon Natives



Specializing in
Native & Waterwise Plants
Eco Landscape Designs
Butterfly Gardens

Kevin & Marvette Bagwell
386.212.9923
www.FullMoonNatives.com
1737 Fern Park Drive
Port Orange, FL 32128
kevinb@FullMoonNatives.com

1 mile west of
I-95/Dunlawton
Look for the Sun Totem

Mon-Wed by appointment
Thur-Fri 10:00-5:00
Saturday 8:00-4:00

TERRY L. ELLIS, President


TLE CONSTRUCTION ENTERPRISES, INC.

GENERAL & ROOFING CONTRACTOR

COMMERCIAL RESIDENTIAL
LICENSED, INSURED & STATE CERTIFIED

Ormond Beach, Florida

Phone: 386 615 6575
Fax: 386 615 6501
Email: tleenterprises@cfl.rr.com
Website: www.TLEconstruction.com


VOLUSIA
BUILDING
INDUSTRY
ASSOCIATION
Builder Member

Clifton Farms, Inc.
Growers of Southern Peas & Green Peanuts

Jody & Carmen Clifton
Owners/Operators

6575 State Road #11
DeLeon Springs, Florida
32130

386 985-5142
386 717-0521 (C)
CAClifton2@aol.com

S&S Apiaries **BEE REMOVAL**

Single Story Hives & 5 Frame Nucs
Pure Honey & More
FOR SALE

Jesse Azam
(386) 478-9722 Cell • (386) 427-6543 Fax
116 Riverside Terrace • Edgewater, FL 32141




**OLD SAWMILL
ELECTRIC, INC.**

Donald Walker

Over 23 Years Experience
Industrial, Commercial & Residential
Service & Repairs

Licensed & Insured Cell: 386-566-6126
ER13014236 Home: 386-738-8690

An Independent
Contractor For

KIM'S KLEANING SERVICE, LLC

"Yes" - We Do Windows

HOMES • CONDOS • OFFICES
Weekly ... Daily ... Monthly

KIM LONG
Owner

423-9134

**"The bee is more honored than other animals, not because he labors,
but because she labors for others—Saint John Chrysostom**

Beekeeping —Classifieds

1/8 wire for sale, 3 feet wide, \$2.50 per running foot—Don Druckert <ndruckert@cfl.rr.com>

Want to sell Beekeeping related goods or services? E-mail the Newsletter at Beekeeper7501@aol.com

Selected Florida and out of State Honey Bee and Queen Suppliers

Carpenter Apiaries
10 Marlow Road
Frostproof, Fl. 33843
863-635-3261
betterqueens@earthlink.net

Honeyland Farms
22146 o'Brien RD
Howey in the Hills, Fl. 34737
342-429-5101

Miksa Honey Farms
13404 Honeycomb Rd
Groveland, Fl. 3436
352-429-3447

D & J Apiaries
17732 S. E. 3rd Ave.
Umatilla, Fl. 32784
1-352-669-4233

Glenn Apiaries
760-728-3731

Walter T. Kelly Beekeeping
1-800-233-1899

Honey Bee Queen Breeders Map—Google Maps

Beekeepers of Volusia County, Florida

Membership Registration Form—2015

Name

Date

Address

City_____ **State**_____ **Zip Code** _____

Telephone Number _____

E-mail address: Important - Much business is done by electronic mail

1. Regular Membership (includes family members) \$15.00 []

2. Lifetime membership—\$250.00

3. Total Amount paid \$_____

Please make checks payable to Beekeepers of Volusia County, Florida

Bring to meeting or mail to:

**Ron Kull, Treasurer, 2525 Palm Dr.
Port Orange, FL 32128,
Phone: 1-386-451-2978
E-mail: Kullrp@yahoo.com**

Meeting Information...

**4th Wednesday of each month... 6:30 PM
Volusia County Agricultural Center Auditorium,
3100 E. New York Ave., Deland**

Beekeeping DVD Library

Swarm Boxes

Requeening & Colony Division

Free Bees for you

The Magic of Mead

Bee Removal

Keeping Bees & Producing Honey

Introduction to Beekeeping

Beekeeping Classes, 101, 102, 103

Contact the Club Secretary, Donna Balo, 386-738-1984 for details